

CITY OF FORT COLLINS

INTER-CITY CORRESPONDENCE
FORT COLLINS, COLORADO

March 29, 1965

C. Adam Fischer
City Engineer

Re: Water Feed to Northwest
Subdivision.

Sir:

Attached you will find a drawing showing the water main supply lines to the Northwest Subdivision and how the water lines are to be extended to the Mountain View Heights Subdivision.

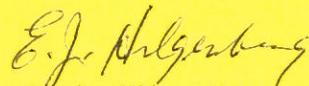
As the plot shows the whole area is being supplied by a 4" C.I. line on Maple Street which in turn is being fed by 4" lines from McKinley and Maple Streets from the South and East.

At the present these lines are supplying 42 homes in the Northwest Subdivision and when they are extended they will serve 80 homes in the Mountain View Subdivision.

Therefore, I would recommend that before June 1, 1965, that the 6" line on Roosevelt be extended and tied to the 6" line on Maple as well as the 8" line on Clover Lane be extended South to LaPorte Avenue and tied to the existing 20" line there.

At the present there are 2 fire hydrants installed, but I am not at all sure that the supply would be adequate if a large fire would occur.

Very truly yours,



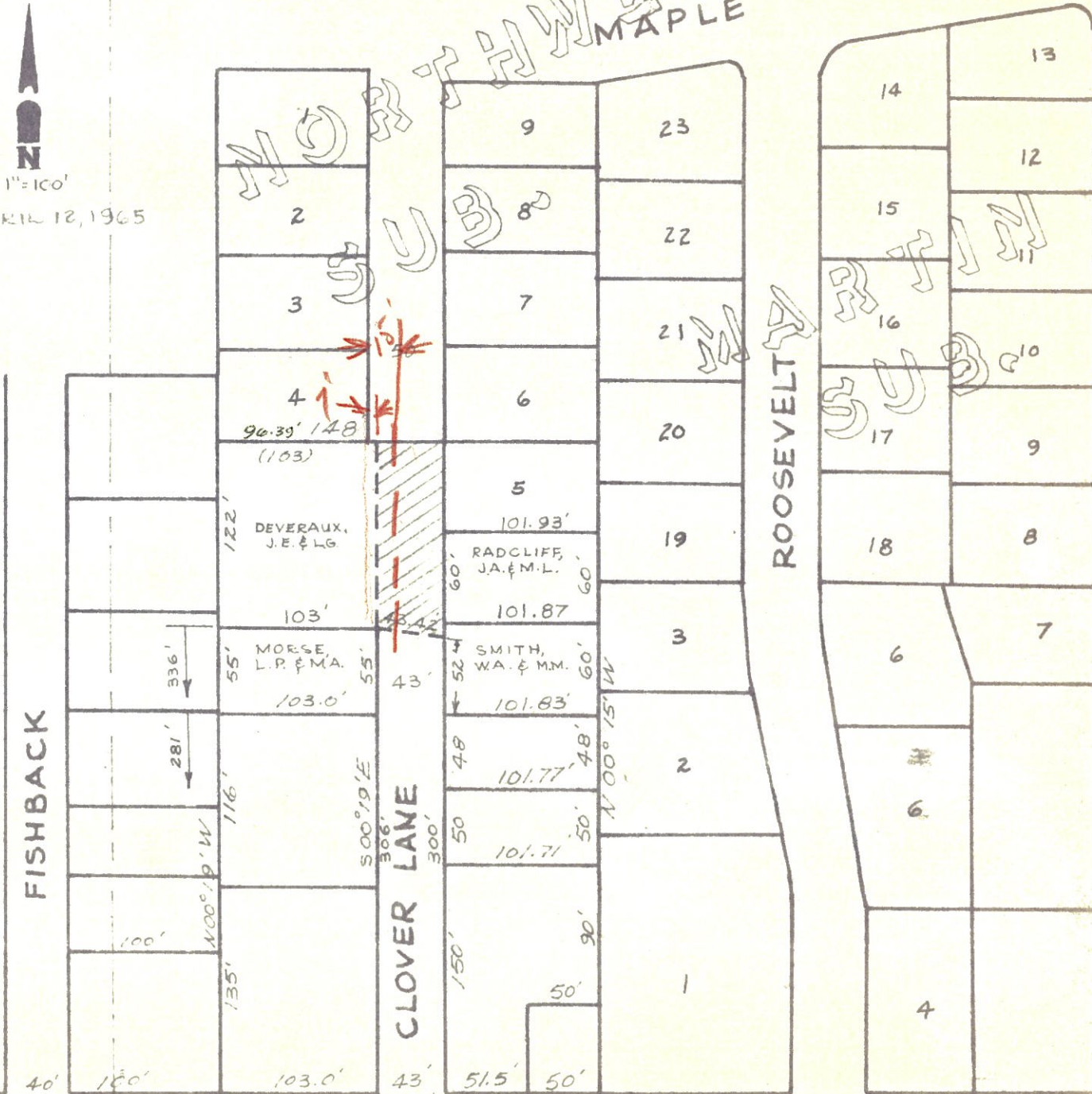
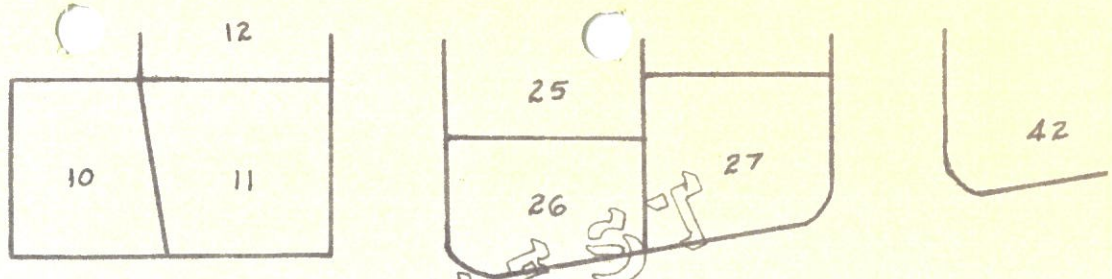
E. J. Hilgenberg,
Water & Sewer Supt.

EJH/e



1"=100'

APRIL 12, 1965



SW COR. OF NE 1/4 SEC. 10-7-69

25

MORSE, LANCE P. & M.A.

1189-358

Com. at a point 70' E. & N 0°19'W 281' from
SW cor of NE 1/4 of SEC 10-7-69, thence
N 0°19'W 55', th E 103', th S 0°19'E 55',
th W 103' to pt. of beg.

33

DEVERAUX J.E. & L.G.

1244-127

Beg pt 70 E & 336 N of SW cor of NE 1/4
SEC 10-7-69 th N 122', th E 103', th
S 122', th W 103' to pt of beg.

39

Smith, W.A. & Myrtle M.

1052-235

Comm. pt 216' E & N 0°19'W 278 ft from SW
COR NE 1/4 of SEC 10-7-69, th E 101.82', th
N 0°15'W 60' to the S line of lands conveyed to
Jesse Angell and Mary B Angell by W.D. record
1-1-00 & 078 th W 101.82' th S 0°19'E to