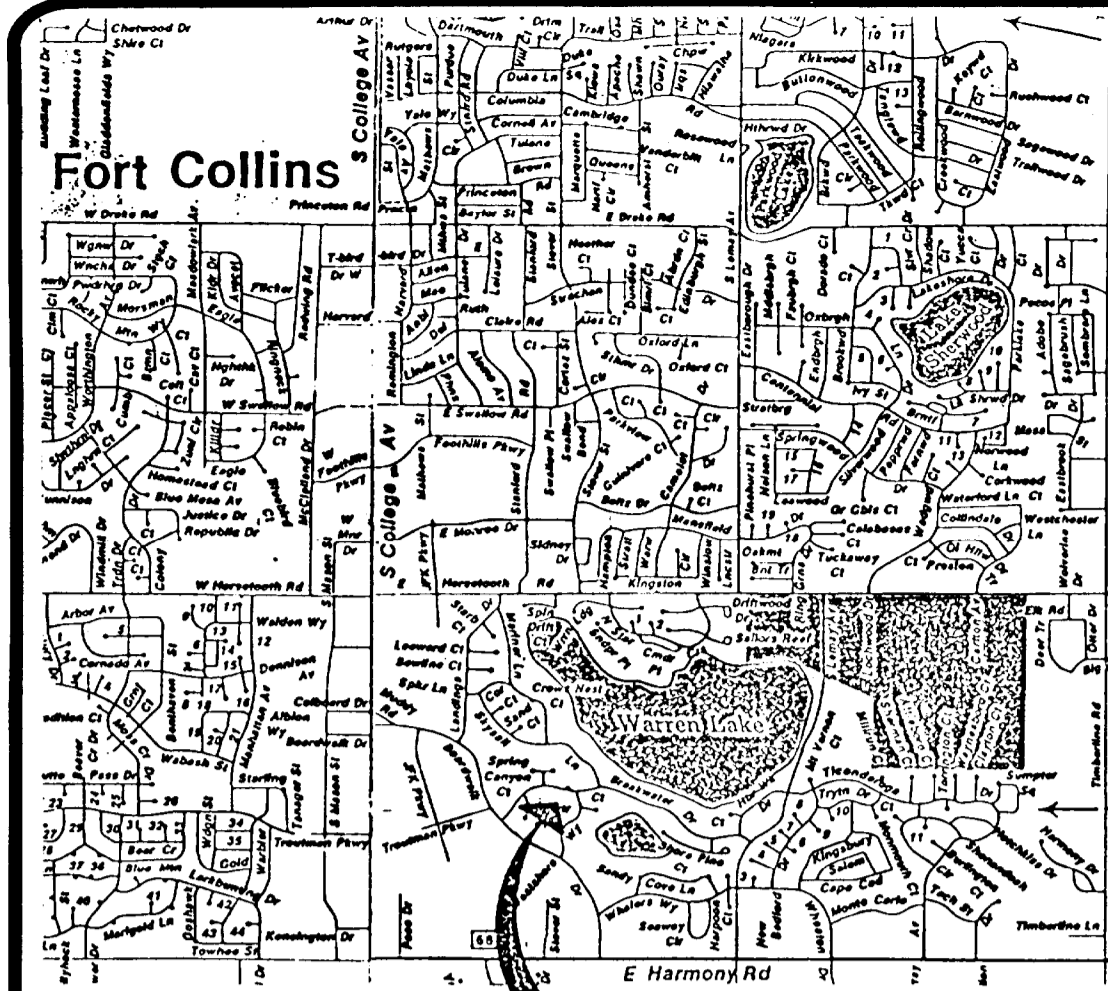


C-93 1580

CREEKSID ESTATES P.U.D.



BEING A REPLAT OF SHORELINE P.U.D.
 SITUATE IN THE SOUTHEAST 1/4 OF SECTION 36, TOWNSHIP 7 NORTH,
 RANGE 69 WEST OF THE 6TH P.M.,
 CITY OF FORT COLLINS, COUNTY OF LARIMER, STATE OF COLORADO.

WITNESS MY HAND AND SEAL THIS 28th DAY OF July, A.D., 1989
 UNITED BANK OF FORT COLLINS, N.A.
 BY Ronald E. Walling
 RONALD E. WALLING, VICE PRESIDENT
 STATE OF COLORADO)
 COUNTY OF LARIMER) SS
 THE FOREGOING INSTRUMENT WAS ACKNOWLEDGED BEFORE ME THIS 28th
 DAY OF July, 1989, A.D. BY Ronald E. Walling, Vice President
 OF UNITED BANK OF FORT COLLINS, N.A.
 NOTARY PUBLIC
 MY NOTARIAL COMMISSION EXPIRES: 10-19-90

VICINITY MAP

PROJECT LOCATION

STATEMENT OF OWNERSHIP, SUBDIVISION AND DEDICATION:
 KNOW ALL MEN BY THESE PRESENTS: That the undersigned, being the Owner(s) and Proprietors of the following described land, to-wit: Shoreline P.U.D. situate in the Southeast Quarter of Section 36, Township 7 North, Range 69 West of the 6th Principal Meridian, Larimer County, Fort Collins, Colorado containing 3.01 acres, more or less, have caused the same to be surveyed and subdivided into lots and a street as shown on this plat to be known as CREEKSID ESTATES P.U.D. and is subject to all easements and rights-of-way now on record or existing or indicated on this plat and does hereby dedicate and convey to and for public use, forever hereafter, the street and easements as are laid out and designated on this plat, provided, however, that acceptance by the City of this dedication of easements does not impose upon the City a duty to maintain the easements so dedicated.

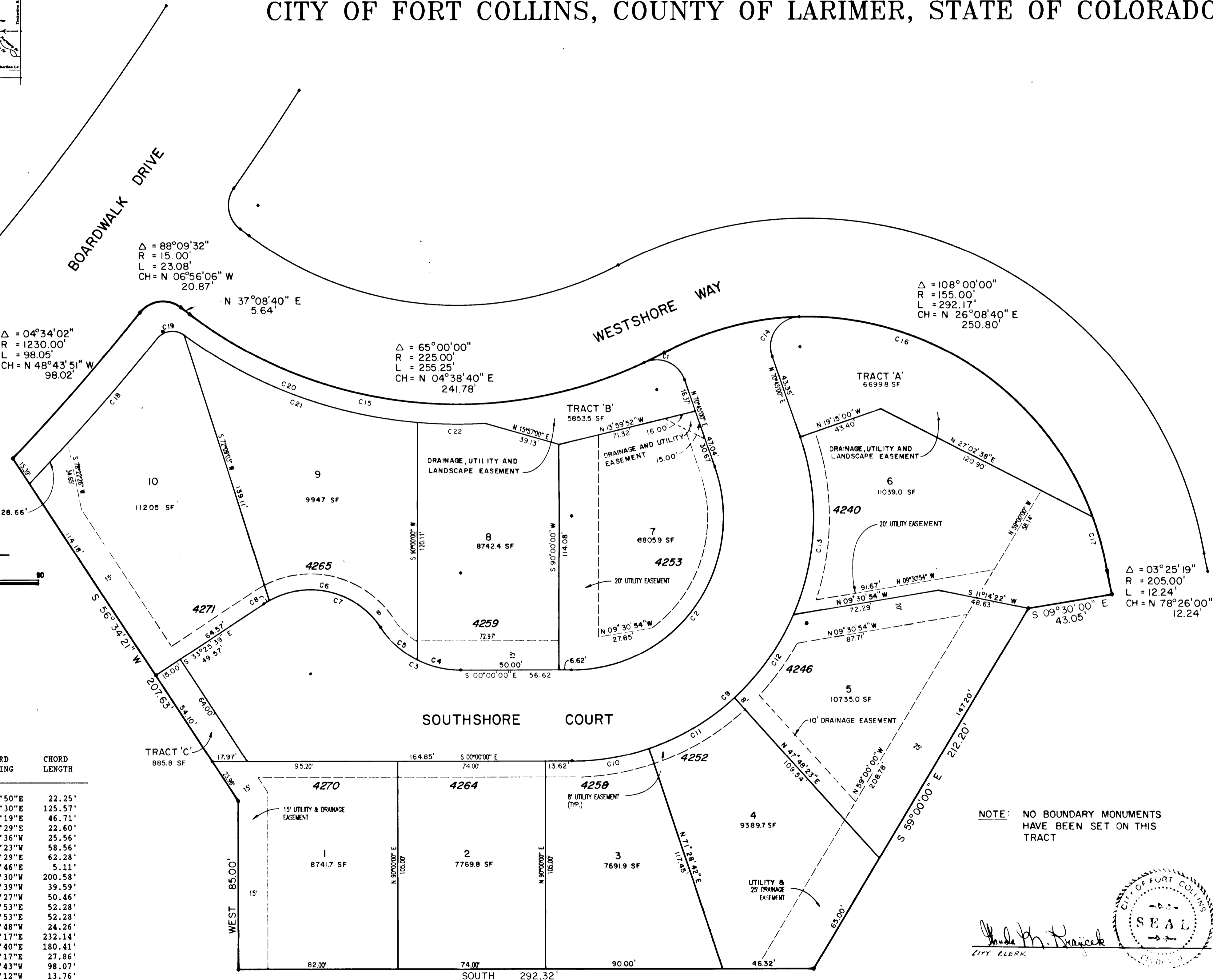
WITNESS MY HAND AND SEAL THIS 27th day of July, 1989
 FAIRFIELD COMPANIES INC.
 BY: Kenneth M. Slyziuk
 Kenneth M. Slyziuk, President
 STATE OF COLORADO SS
 COUNTY OF LARIMER
 The foregoing instrument was acknowledged before me this 27th
 day of July, 1989 by Kenneth M. Slyziuk of
 FAIRFIELD COMPANIES INC.
Nancy E. Campbell
 Notary Public
 My Notarial Commission Expires 12/4/92

ATTORNEY'S CERTIFICATE
 This is to certify that on the 26 day of July, 1989, I examined the legal description appearing hereon, of the land within the boundary lines of CREEKSID ESTATES P.U.D. and found the owner(s) of record on this date to be as shown hereon.
Michael E. Bay #8895
 Attorney

SURVEYOR'S CERTIFICATE
 I, MURRAY E. MANLEY, a duly registered Professional Land Surveyor in the State of Colorado, do hereby certify that this plat of CREEKSID ESTATES P.U.D. truly and correctly represents the results of a survey made by me or under my direct supervision.

APPROVED as to form by the Director of Engineering of the City of Fort Collins, Colorado on this 28th day of August, A.D. 1989.

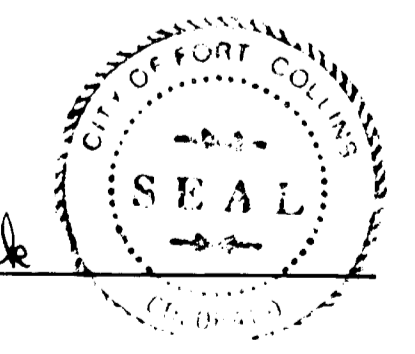
APPROVED by the Planning Director of the City of Fort Collins, Colorado on this 21st day of JULY, A.D. 1989.



CURVE TABLE

NAME	DELTA	RADIUS	LENGTH	CHORD BEARING	CHORD LENGTH
C1	95 43'03"	15.00'	25.06'	N22 53'50"E	22.25'
C2	109 15'00"	77.00'	146.82'	S54 37'30"E	125.57'
C3	56 40'38"	49.20'	48.67'	N28 20'19"E	46.71'
C4	26 33'41"	49.20'	22.81'	N13 17'29"E	22.60'
C5	30 06'56"	49.20'	25.86'	S41 36'36"W	25.56'
C6	83 26'30"	44.00'	64.08'	S14 57'23"W	58.56'
C7	90 06'17"	44.00'	69.20'	N11 37'29"E	62.28'
C8	06 39'46"	44.00'	5.12'	S30 05'46"E	5.11'
C9	109 15'00"	123.00'	234.53'	N54 37'30"W	200.58'
C10	18 31'18"	123.00'	39.76'	N09 15'39"W	39.59'
C11	23 40'19"	123.00'	25.78'	N30 21'27"W	50.46'
C12	24 32'26"	123.00'	52.68'	S54 27'53"E	52.28'
C13	42 30'55"	123.00'	91.27'	S54 27'53"E	52.28'
C14	107 54'23"	15.00'	28.25'	N55 17'48"W	24.26'
C15	62 06'40"	225.00'	243.91'	N06 05'17"E	232.14'
C16	71 10'34"	155.00'	192.55'	N34 14'40"E	180.41'
C17	10 18'40"	155.00'	27.89'	N74 59'17"E	27.86'
C18	04 30'51"	1245.00'	98.09'	N48 32'43"W	98.07'
C19	86 57'53"	10.00'	15.18'	N07 19'12"W	13.76'
C20	39 35'12"	235.00'	162.37'	N16 22'08"E	159.16'
C21	31 11'53"	235.00'	127.96'	N20 33'48"E	126.38'
C22	08 23'19"	235.00'	34.41'	N00 46'12"E	34.38'

NOTE: NO BOUNDARY MONUMENTS HAVE BEEN SET ON THIS TRACT



No.	Revision	By	Date

PARSONS & ASSOCIATES
 CONSULTING ENGINEERS
 432 Link Lane Plaza
 Ft. Collins, Colorado 80524
 (303) 221-2400

Project:	88.20 SLY
Scale:	1" = 30'
Designer:	Checked By:
Draftsman:	Prepared: 6/89

CREEKSID ESTATES
 PLAT

Sheets

This unofficial copy was downloaded on Aug-13-2020 from the City of Fort Collins Public Records Website: http://citydocs.fcgov.com For additional information or an official copy, please contact Engineering Office 281 North College Fort Collins, CO 80521 USA