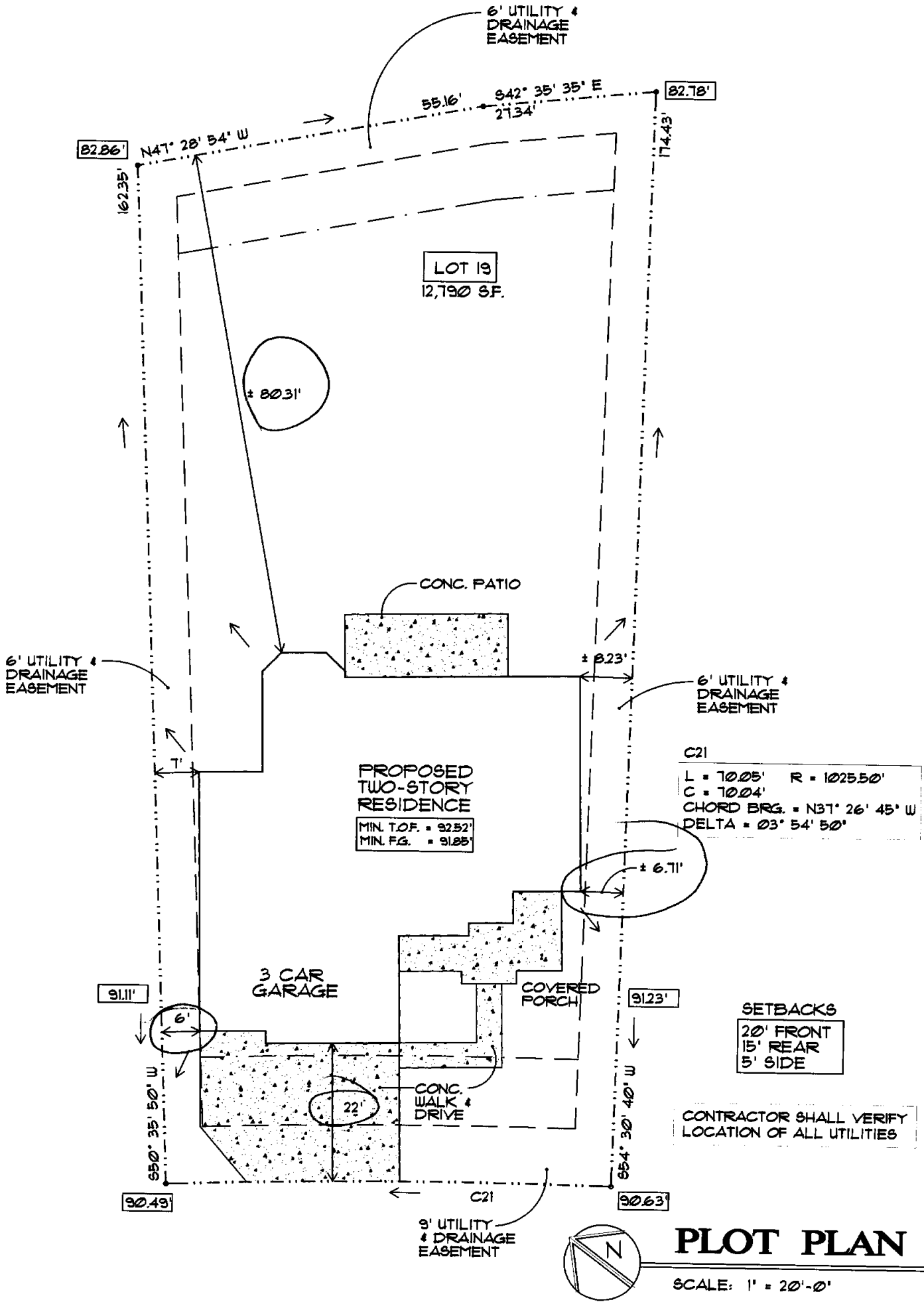


B0401279



**PE PLAZA ENGINEERING**  
SERGIO F. PLAZA, P.E.  
P.O. Box 1002  
Loveland, Colorado 80539  
(970) 663-6363

DATE: 2/22/04  
DRAWN BY: SFP  
CHKD. BY: SFP  
REVISED: 3/16/04  
DWG.: L19Swift  
PN: 03-37-A024

**LIBERTY HOMES**  
"The Torrie"  
5950 SNOWY PLOVER COURT  
L19 Swift Add. to Fossil Lake P.U.D.  
1st Replat, Fort Collins, Colorado