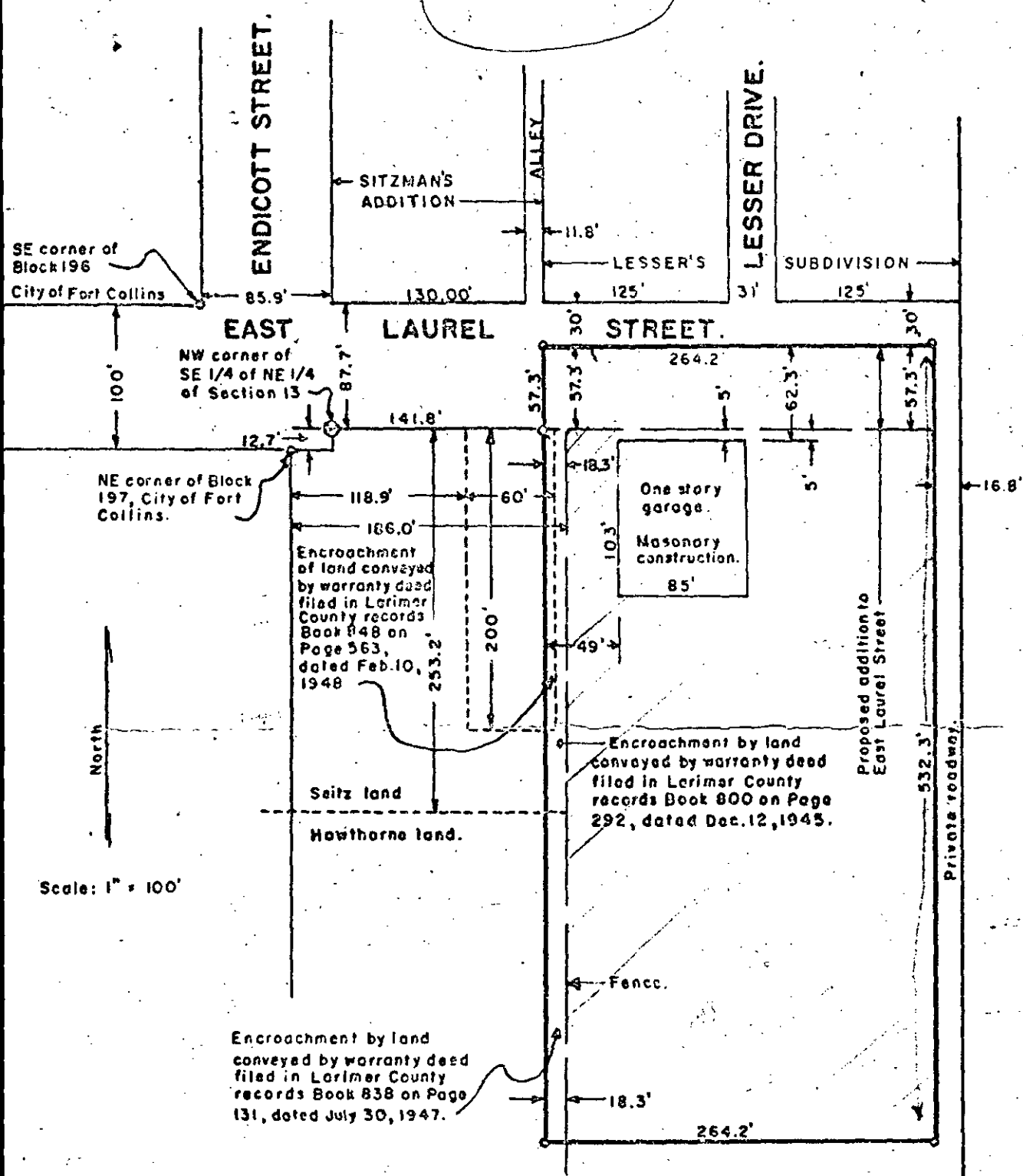


# 28,993



Scale: 1" = 100'

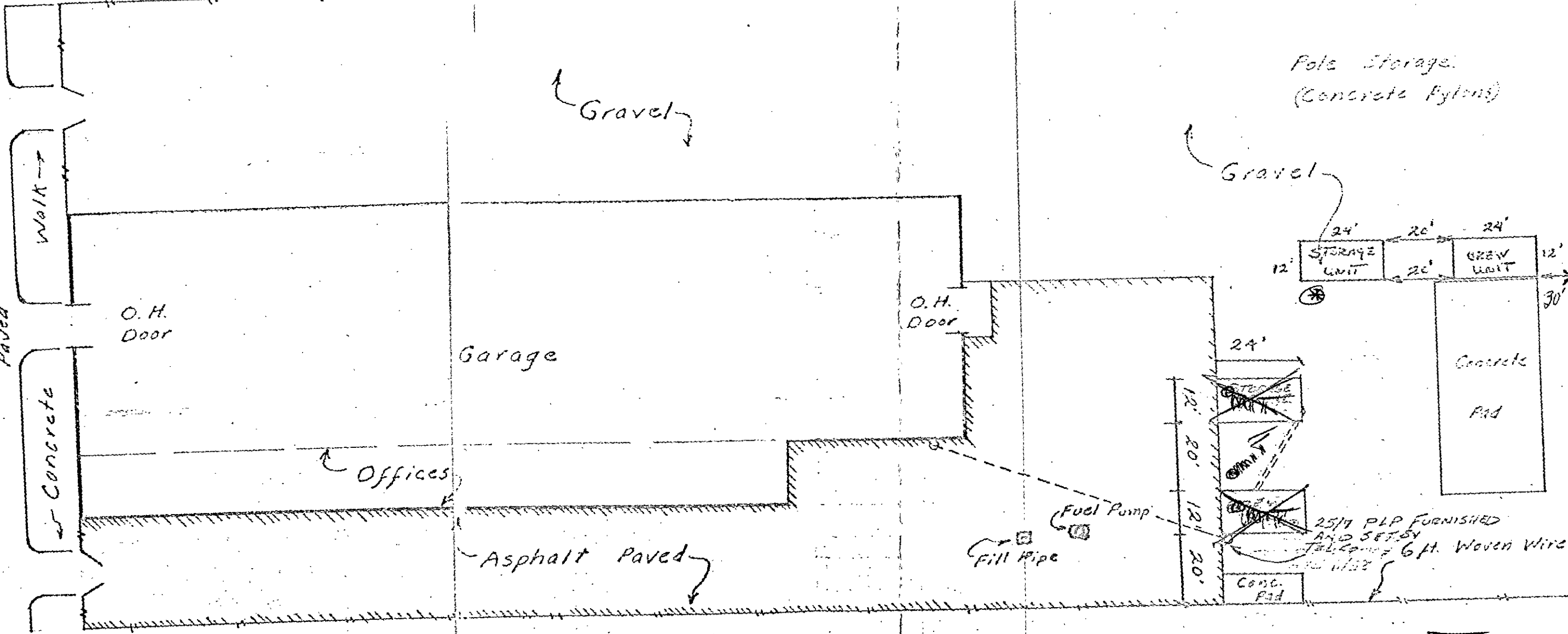
PLAT OF A TRACT OF LAND IN THE SE 1/4 OF THE NE 1/4 OF SECTION 13, TOWNSHIP 7 NORTH, RANGE 69 WEST OF THE 6TH P.M.

ZBA # 363

Sheet 1 of 2 sheets.

HOWARD E. EVANS

East Laurel Street  
Paved

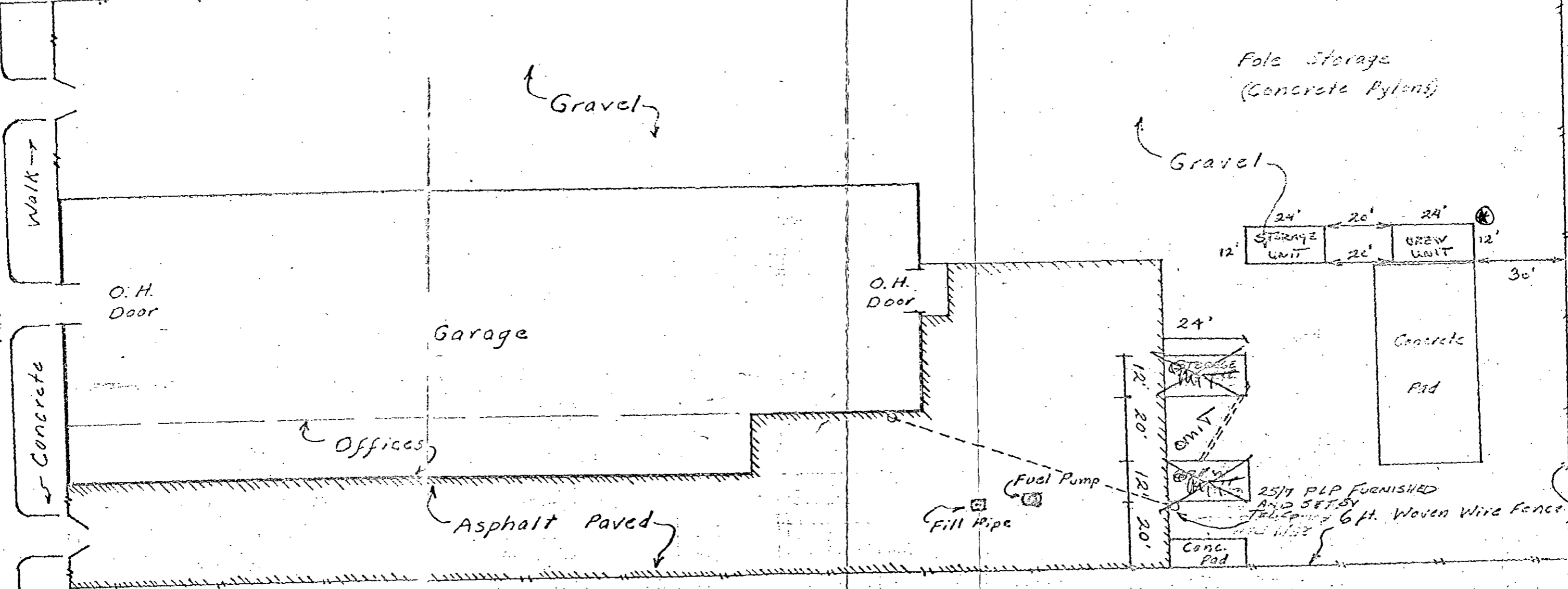


FORT COLLINS COLORADO  
April 1973 Scale 1"=30'

⊗ STORAGE UNIT

N.

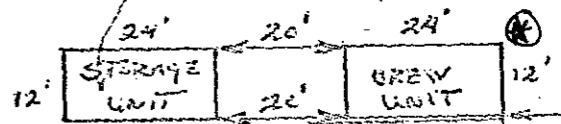
East Laurel Street  
Paved



Gravel

Gravel

Fole Storage  
(Concrete Pylons)



O.H. Door

O.H. Door

Garage

Offices

Asphalt Paved

Fuel Pump

Fill Pipe

24'

12'  
20'  
12'  
20'

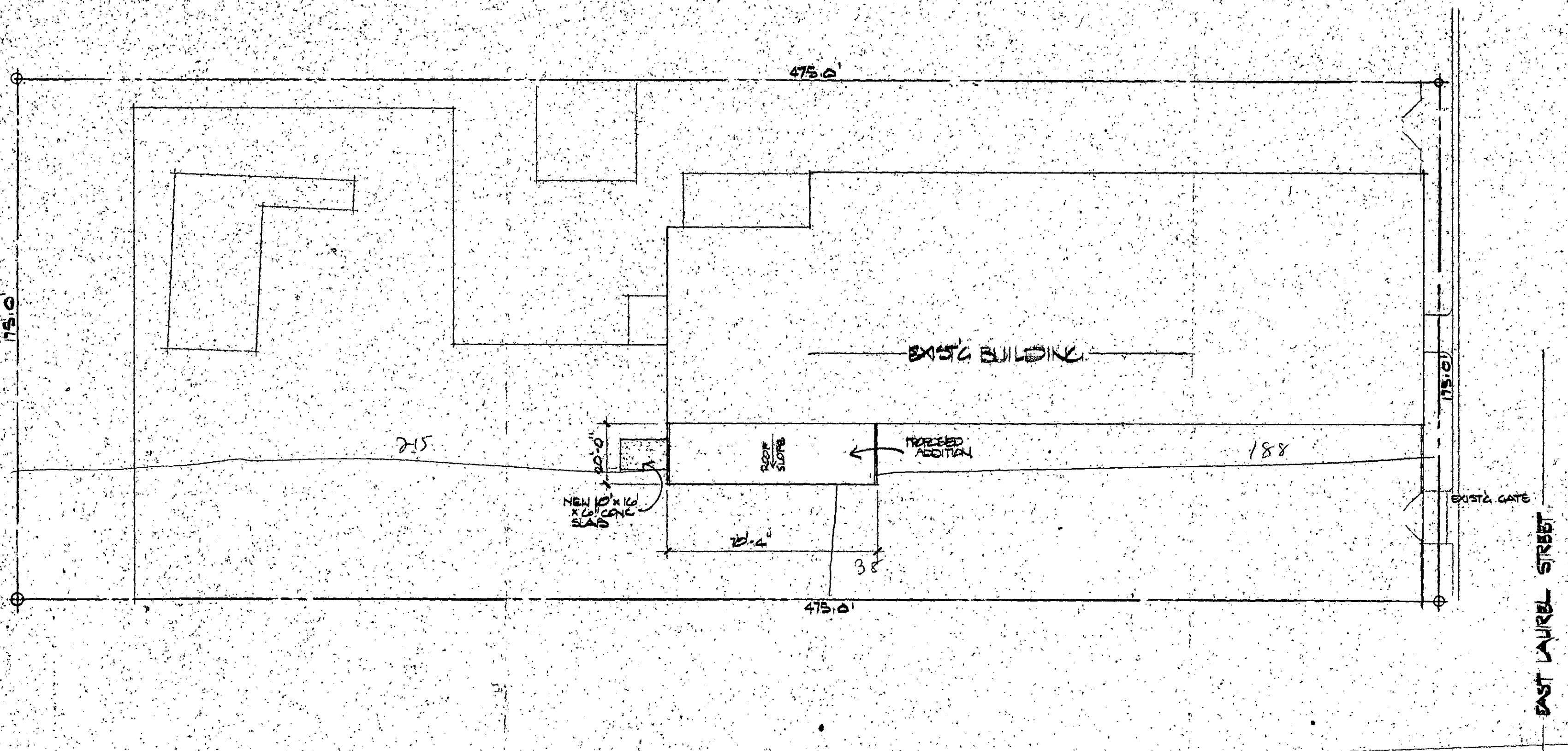
Concrete Pad

25/17 PLP FURNISHED  
AND SET BY  
TELEPHONE 6 ft. WOVEN WIRE FENCE  
AND 11/32

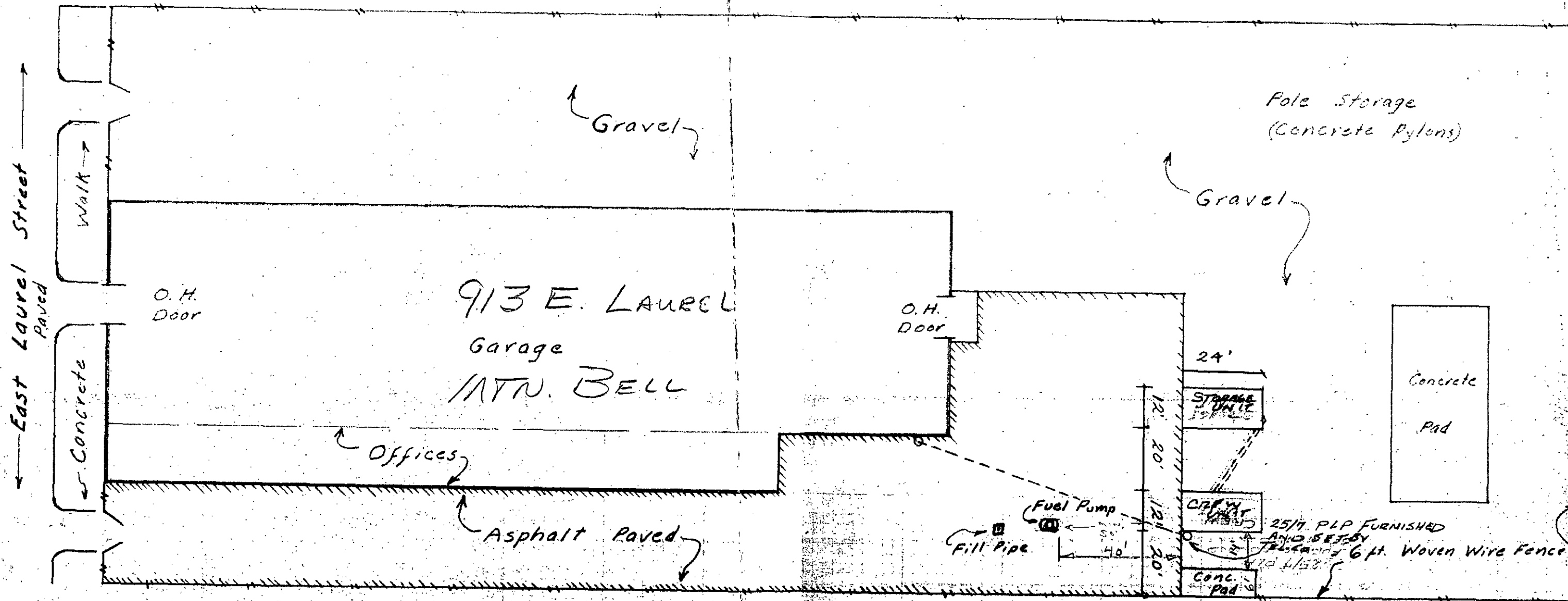
FORT COLLINS COLORADO  
April 1973 Scale 1"=30'

⊕ CREW UNIT

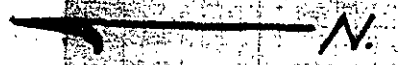
N.



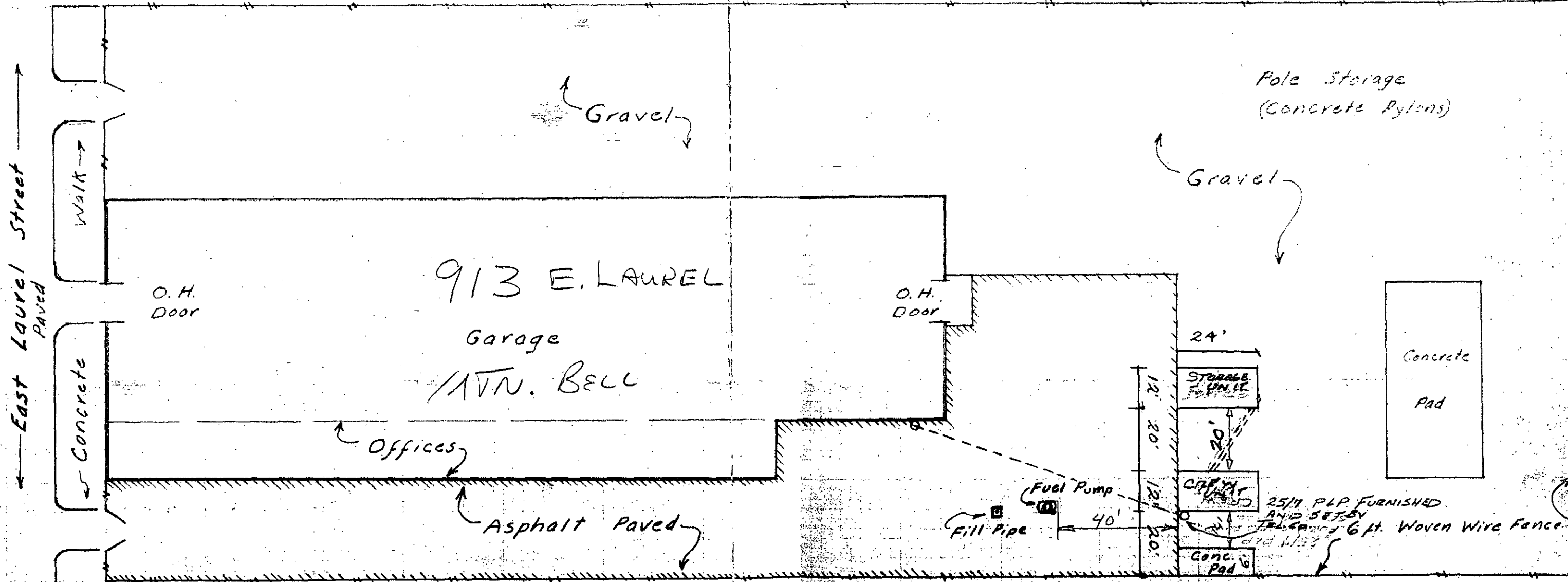
EAST LAUREL STREET



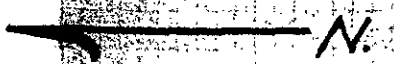
FORT COLLINS COLORADO  
 April 1973 Scale 1"=30'



⊕ NOTE: MOVE BLDG'S South 10'  
 TO YIELD 50' MIN. FROM  
 FUEL pump.



FORT COLLINS COLORADO  
 April 1973 Scale 1"=30'



⊗ -NOTE: MOVE Bldg's South 10'  
 TO YIELD 50' MIN. FROM  
 FUEL PUMP.