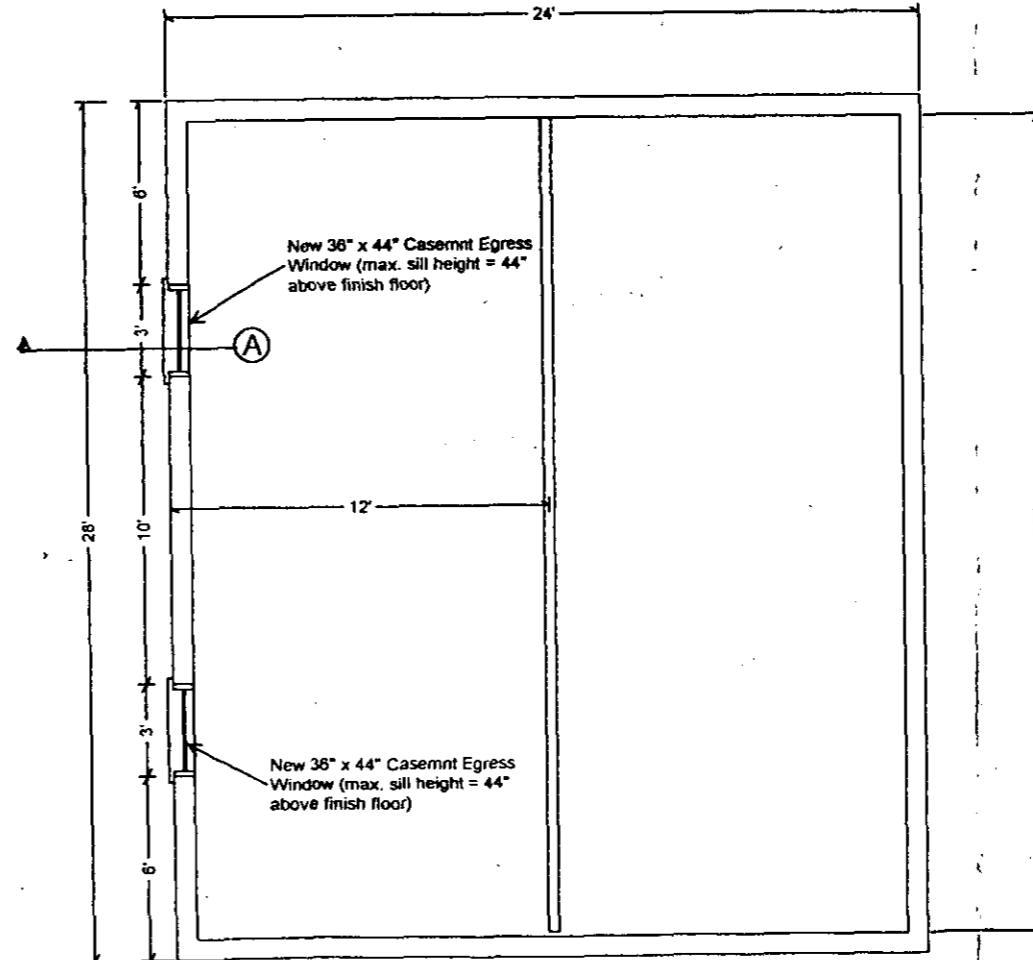
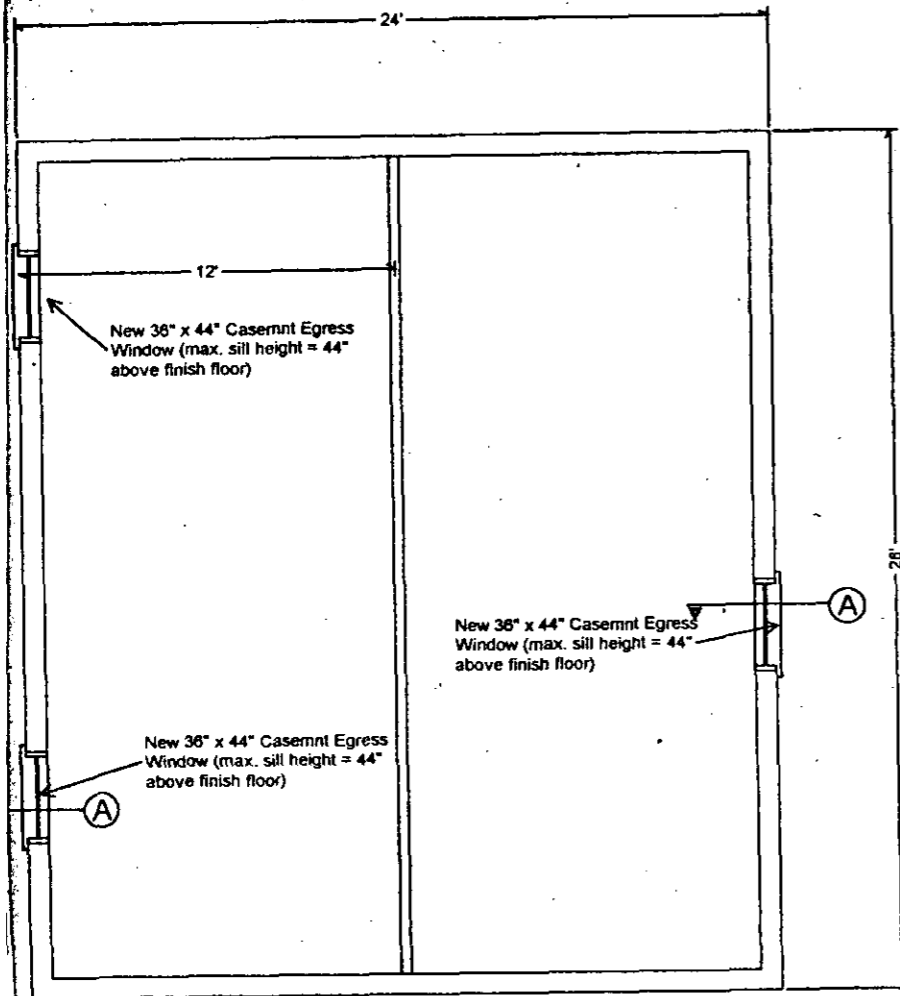
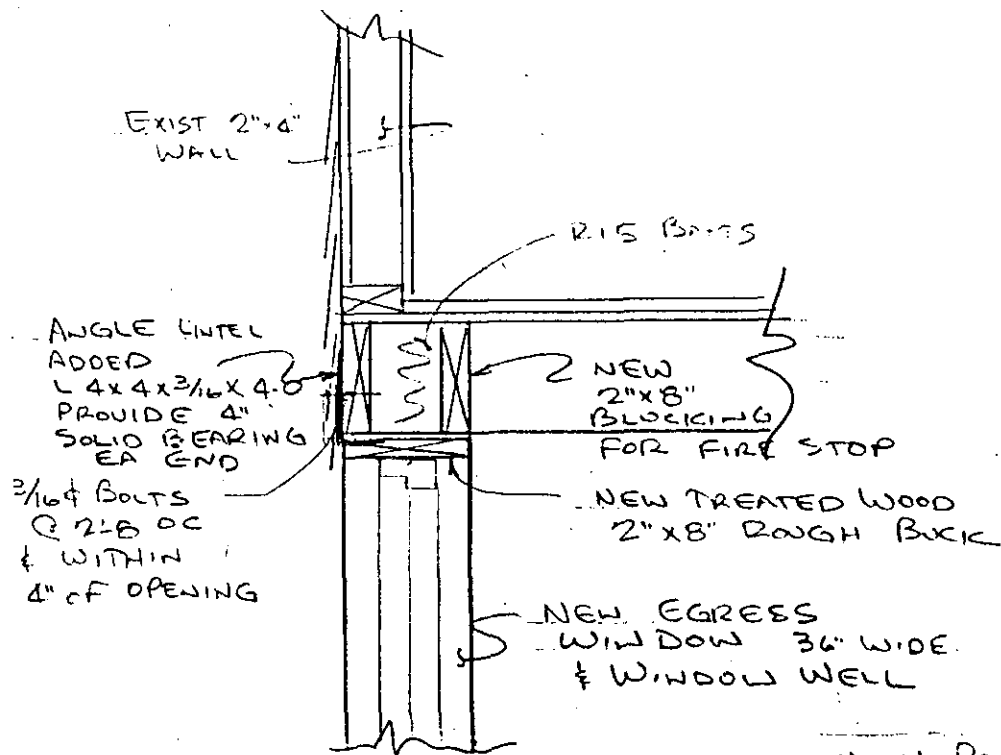


972887



N  
↑  
802 West Laurel Street  
FOUNDATION PLAN  
Scale 1/4" = 1'-0"

972887



ANGLE Lintel  
ADDED  
L 4x4x3/16x4-0  
PROVIDE 4"  
SOLID BEARING  
EA END

3/16" Bolts  
@ 2'-8" OC  
& WITHIN  
4" OF OPENING

RIS BRGS

NEW  
2"x8"  
BLOCKING  
FOR FIRE STOP

NEW TREATED WOOD  
2"x8" ROUGH BRICK

NEW EGRESS  
WINDOW 36" WIDE  
& WINDOW WELL

SECTION A  
1/2" = 1'-0"

NOTE: PROVIDE  
TEMP. SUPPORT  
FOR EXIST. FLOOR  
AS REQUIRED  
DURING DEMOLITION  
OF EXIST CONC. WALL

972887

972807

TION  
WALL



<b>ARG. ENGINEERS AND ASSOCIATES, INC.</b>		
SCALE: NOTED	APPROVED BY	DRAWN BY ARG
DATE: 8/5/97		
802-806 WEST LAUREL ST.		
REMODEL		DRAWING NUMBER 1 OF 1

AUG 5 1997