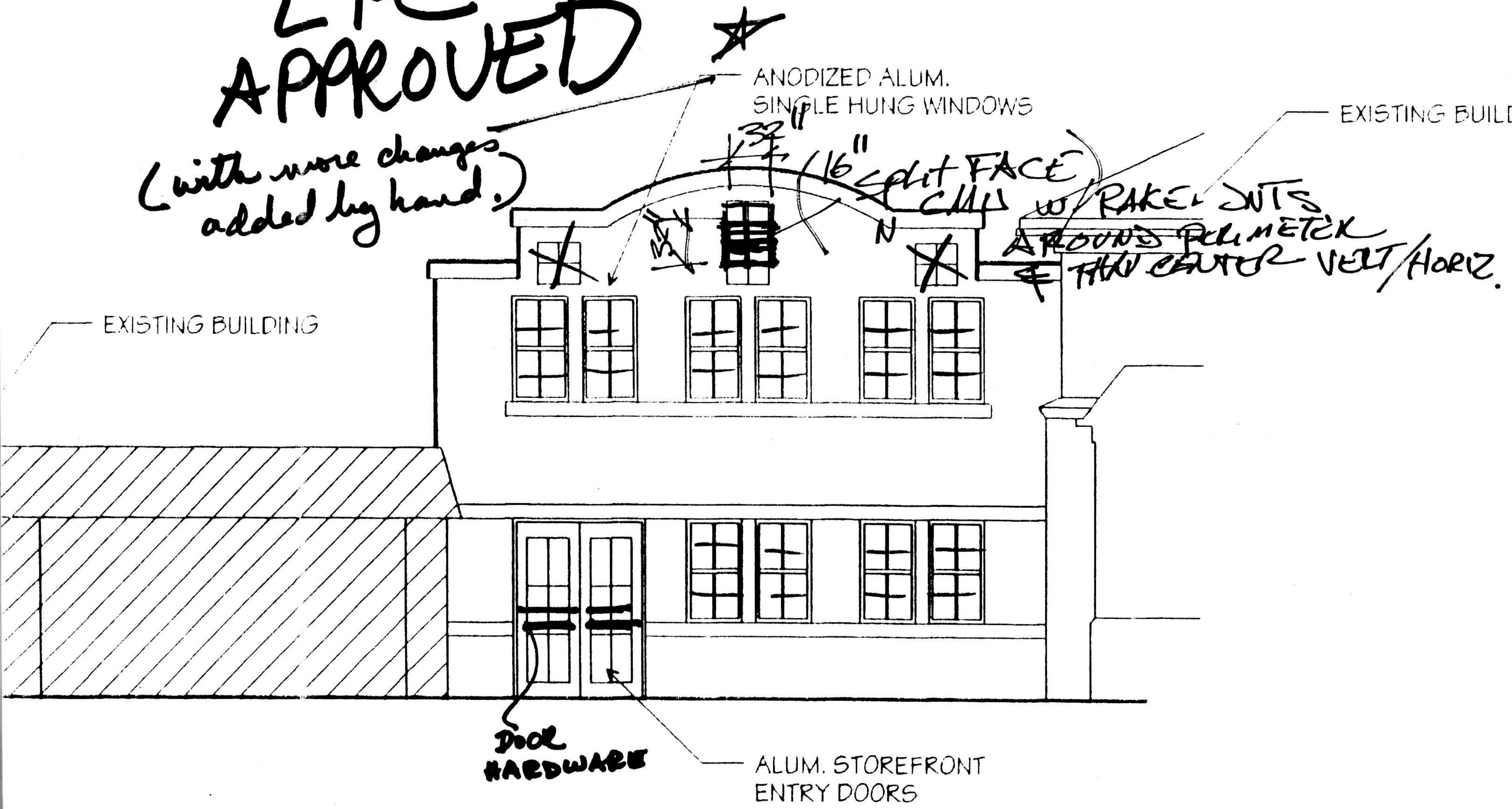


- order to make for handicapped accessibility.
2. The building addition's height is also necessary because of the internal requirement of mechanical/services not found in the front building, and to avoid having to install ramping on the second floor interiors.
 3. The historic building's roofline is a plain boxed cornice, of post World War II design.
 4. The roofline overlap will only impact the north one-third of the historic building. From the south, you will still see the historic roofline.
 5. The impact is on the rear of the historic building.

LPR APPROVED

(with more changes added by hand.)



SOUTH ELEVATION