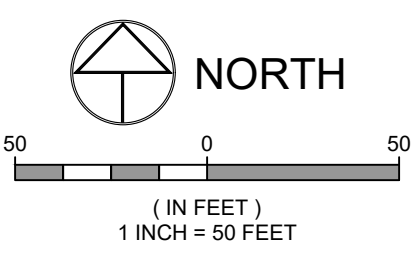
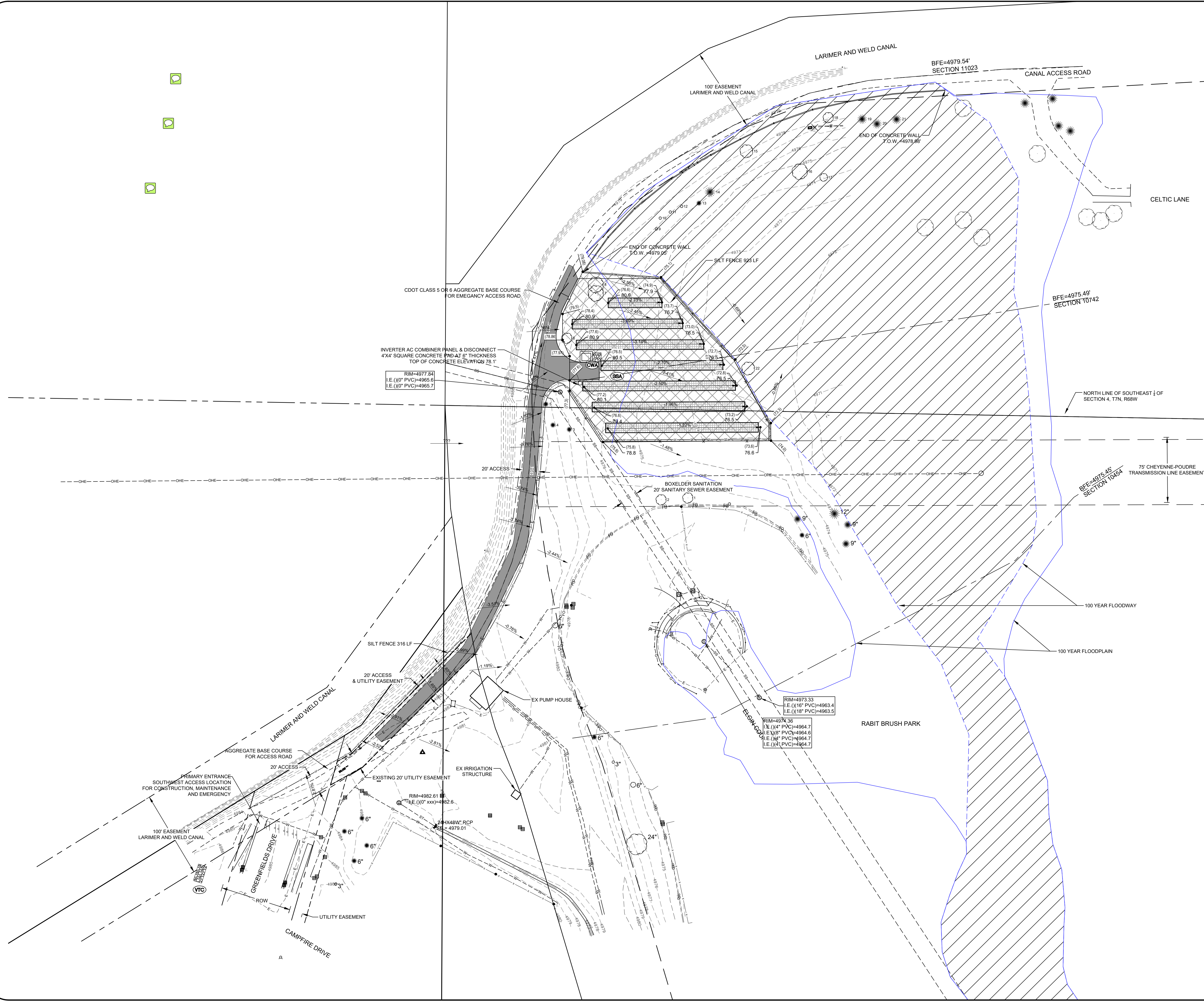
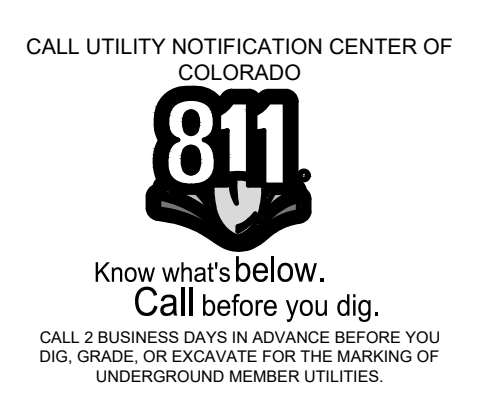
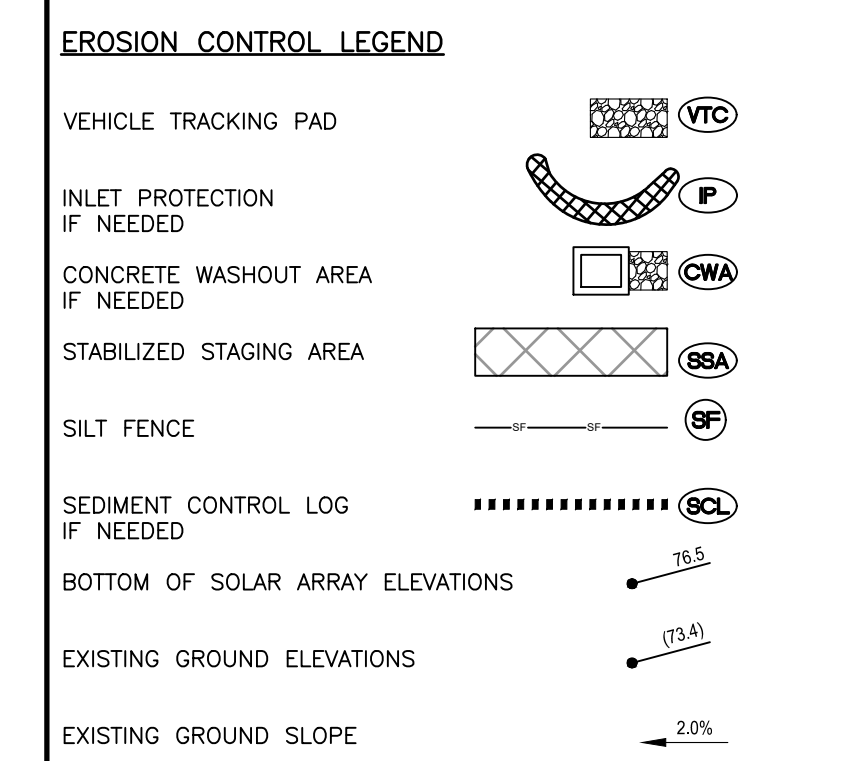


DRAWING FILENAME: P:\2018-2019\2018-001-EROSION CONTROL... DATE: Oct 10, 2019... LAYOUT NAME: EROSION CONTROL... LIST OF SHEETS: [1828-001_001] [1828-001_002] [1828-001_003] [1828-001_004] [1828-001_005] [1828-001_006] [1828-001_007] [1828-001_008] [1828-001_009] [1828-001_010] [1828-001_011] [1828-001_012] [1828-001_013] [1828-001_014] [1828-001_015] [1828-001_016] [1828-001_017] [1828-001_018] [1828-001_019] [1828-001_020] [1828-001_021] [1828-001_022] [1828-001_023] [1828-001_024] [1828-001_025] [1828-001_026] [1828-001_027] [1828-001_028] [1828-001_029] [1828-001_030] [1828-001_031] [1828-001_032] [1828-001_033] [1828-001_034] [1828-001_035] [1828-001_036] [1828-001_037] [1828-001_038] [1828-001_039] [1828-001_040] [1828-001_041] [1828-001_042] [1828-001_043] [1828-001_044] [1828-001_045] [1828-001_046] [1828-001_047] [1828-001_048] [1828-001_049] [1828-001_050]



- CONTRACTOR NOTES:**
- THE CONTRACTOR IS RESPONSIBLE FOR OBTAINING A PERMIT FOR STORM WATER DISCHARGES ASSOCIATED WITH CONSTRUCTION ACTIVITY FROM THE COLORADO DEPARTMENT OF PUBLIC HEALTH AND ENVIRONMENT, AT LEAST 10 DAYS PRIOR TO START OF CONSTRUCTION ACTIVITIES FOR LAND DISTURBANCE AREAS OF ONE ACRE OR GREATER. PERMIT MUST BE KEPT CURRENT THROUGHOUT THE CONSTRUCTION PROCESS.
 - THE CONTRACTOR IS RESPONSIBLE FOR CLEAN UP AND REMOVAL OF ALL SEDIMENT AND DEBRIS FROM ALL DRAINAGE INFRASTRUCTURE AND PUBLIC FACILITIES DURING THE ENTIRE CONSTRUCTION PROCESS.
 - THE CONTRACTOR MUST TAKE REASONABLE PRECAUTIONS TO ENSURE THAT VEHICLES DO NOT TRACK OR SPILL EARTH MATERIALS ON THE STREETS/ROADS AND MUST IMMEDIATELY REMOVE SUCH MATERIALS IF THIS OCCURS.
 - THE CONTRACTOR IS RESPONSIBLE FOR CONTROLLING LITTER SUCH AS DISCARDED BUILDING MATERIALS, CONCRETE TRUCK WASHOUT, CHEMICALS, AND SANITARY WASTE, AS POSSIBLE. ADDITION, SPILL PREVENTION AND CONTAINMENT BMPs FOR CONSTRUCTION MATERIALS, WASTE, FUEL MUST BE PROVIDED, AS APPLICABLE. LOCATIONS OF STOCKPILES, CONCRETE WASHOUT AREAS, AND TRASH RECEPTACLES MUST BE CLEARLY SHOWN ON THE PLANS.

- GENERAL NOTES:**
- THE SIZE, TYPE AND LOCATION OF ALL KNOWN UNDERGROUND UTILITIES ARE APPROXIMATE WHEN SHOWN ON THESE DRAWINGS. IT SHALL BE THE RESPONSIBILITY OF THE CONTRACTOR TO VERIFY THE EXISTENCE OF ALL UNDERGROUND UTILITIES IN THE AREA OF THE WORK. BEFORE COMMENCING NEW CONSTRUCTION, THE CONTRACTOR SHALL BE RESPONSIBLE FOR LOCATING ALL UNDERGROUND UTILITIES AND SHALL BE RESPONSIBLE FOR ALL UNKNOWN UNDERGROUND UTILITIES.
 - REFER TO THE PLAT FOR LOT AREAS, TRACT SIZES, EASEMENTS, LOT DIMENSIONS, UTILITY EASEMENTS, OTHER EASEMENTS, AND OTHER SURVEY INFORMATION.
 - SPOTS ELEVATIONS SHOWN ARE FINISHED GRADE ELEVATIONS UNLESS OTHERWISE NOTED.
 - THE TOP OF CONCRETE ELEVATIONS SHOWN ARE THE MINIMUM ELEVATIONS OF 4977.50' AND 24" ABOVE THE REQUIRED PROTECTION FROM THE 100-YEAR STORM.
 - ALL PROJECT DATA IS ON THE CITY OF FORT COLLINS VERTICAL DATUM; NAVD 88 (UNADJUSTED). SEE COVER SHEET FOR BENCHMARK REFERENCES.
 - REFER TO THE CITY OF FORT COLLINS STANDARDS AND SPECIFICATIONS FOR GRADING EROSION SEDIMENT CONTROL STANDARD NOTES AND DETAILS.



**WATERGLEN SOLAR ARRAY
SEDIMENT AND
EROSION CONTROL DETAILS**

Sheet
5 of 7

PROJECT: 1828-001	DATE: 9/27/2019	SCALE: N/A	REVIEWED BY: I. TILLEY
DESIGNED BY: I. TILLEY	DRAWN BY: I. TILLEY		

By: _____ Date: _____

Revisions:

No.	By	Date

NORTHERN ENGINEERING

NE

970.231.4158
nortnerengineering.com

FORT COLLINS, 301 North Hovey Street, Suite 100, 80521
GREELEY, 820 8th Street, 80631