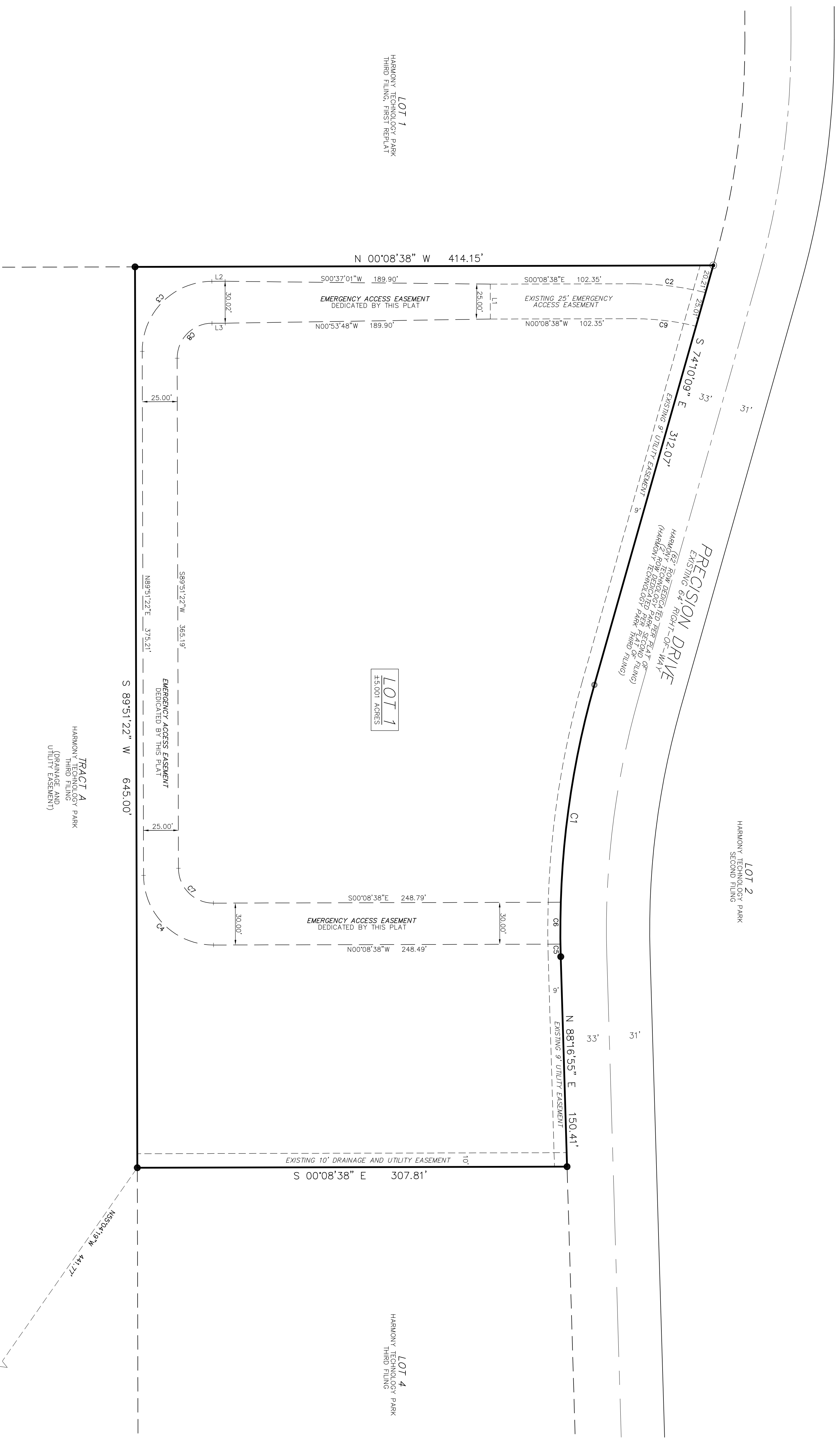


HARMONY TECHNOLOGY PARK THIRD FILING, SECOND REPLAT

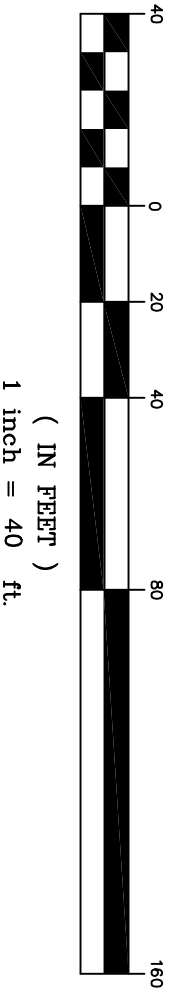
BEING A REPLAT OF LOTS 2 AND 3, HARMONY TECHNOLOGY PARK THIRD FILING,
BEING LOCATED WITHIN THE NORTHWEST ONE-QUARTER OF SECTION 4, TOWNSHIP 6 NORTH,
RANGE 68 WEST OF THE 6TH PRINCIPAL MERIDIAN, CITY OF FORT COLLINS, COUNTY OF LARIMER, STATE OF COLORADO.



LEGEND NOTE: SYMBOLS SHOWN HEREON ARE NOT TO SCALE

- INDICATES FOUND 1/2" REBAR WITH CAP, PLS 14823
- INDICATES SET 5/8" REBAR WITH PLASTIC CAP, PLS 37988
- INDICATES FOUND NAIL AND TAG, PLS 14823 IN WALK

GRAPHIC SCALE



| CURVE | RADIUS | LENGTH | DELTA | CHORD |
|-------|---------|---------|----------|---------------------|
| C1 | 643.00' | 198.94' | 123.58° | 182.96377' |
| C2 | 643.00' | 178.54' | 117.98° | 168.17' |
| C3 | 50.00' | 78.54' | 90.0000° | 54.00838' |
| C4 | 50.00' | 78.54' | 90.0000° | 54.00838' |
| C5 | 643.00' | 8.95' | 0°47'52" | 144.5122°E, 70.71' |
| C6 | 643.00' | 30.00' | 2°40'25" | 188.4051°W, 8.95' |
| C7 | 25.00' | 38.27' | 90.0000° | 54.45122°W, 30.00' |
| C8 | 25.00' | 38.27' | 90.0000° | 54.45122°W, 30.00' |
| C9 | 82.50' | 45.41' | 153°33' | 180.57451°E, 55.50' |

| LINE | BEARING | DISTANCE |
|------|--------------|----------|
| L1 | S00°08'38" W | 25.00' |
| L2 | S00°08'38" W | 30.00' |
| L3 | N00°08'38" W | 3.50' |

WEST 1/4 CORNER SEC. 4, T8N, R88W FOUND 2X ALUMINUM CAP MONUMENT IN

SOUTH LINE INT. 1/4 SECTION 4, T8N, R88W N 88°47'35" W 2654.17' (VA)

EAST 1/4 CORNER SEC. 4, T8N, R88W FOUND 2X ALUMINUM CAP MONUMENT IN

REVISIONS

| NO. | DATE | DESCRIPTION |
|-----|------|-------------|
| | | |
| | | |
| | | |

EDMONDS LAND SURVEYING, INC.
PO BOX 641 KERSEY, CO 80644
PHONE (970) 686-6970
FAX (970) 284-6802
www.EdmondsLandSurveying.com

CLIENT:
ASPEN ENGINEERING

DATE: MAY 20, 2013
SCALE: 1"=40' BK: 101
DWG: RME CHK: RME
PLAT: 06N68W04-105

HARMONY TECHNOLOGY PARK THIRD FILING, SECOND REPLAT
BEING A PART OF THE NW¼ SECTION 4,
TOWNSHIP 6 NORTH, RANGE 68 WEST OF THE 6TH P.M.,
CITY OF FORT COLLINS, COUNTY OF LARIMER, STATE OF COLORADO.

PROJECT NO.:
13-0386

ROBERT M. EDMONDS, PLS 37988
SHEET 2 OF 2