

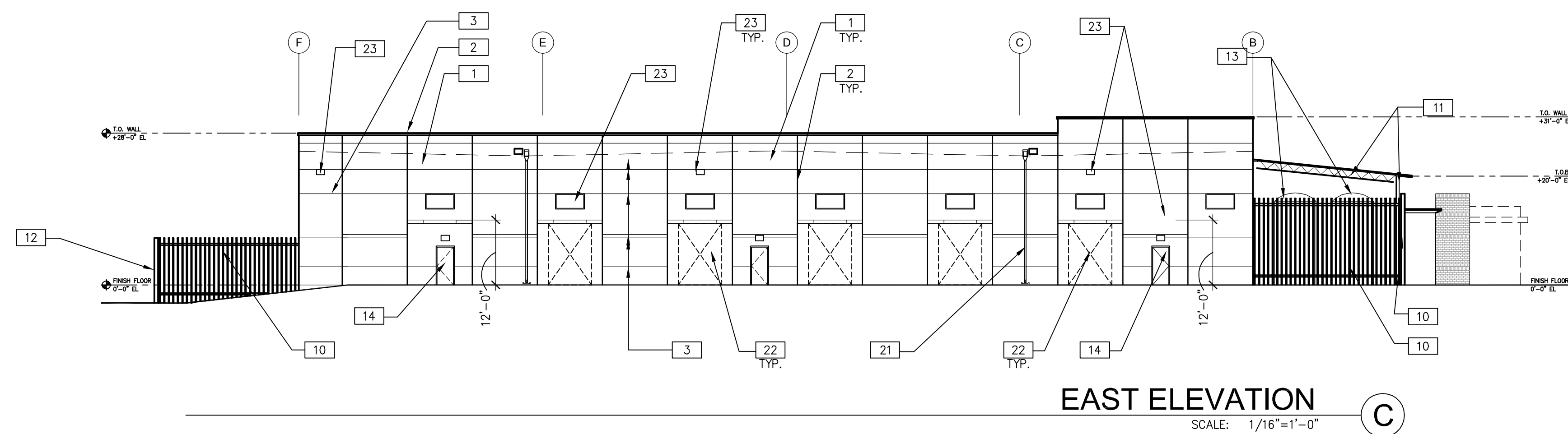
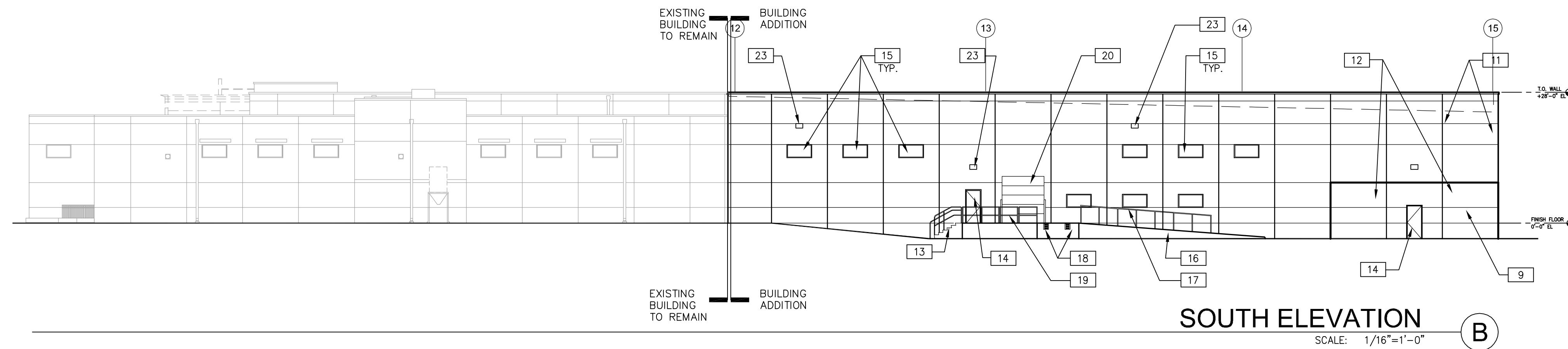
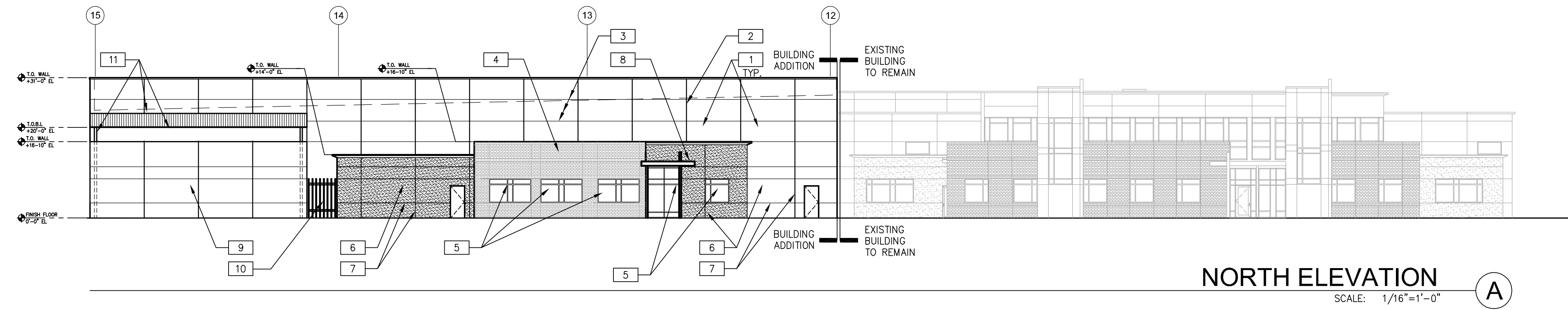
HARMONY TECHNOLOGY PARK THIRD FILING SECOND REPLAT

PROJECT DEVELOPMENT PLAN/FINAL DEVELOPMENT PLAN

architecture
planning
interiors
graphics
site development

6251 greenwood plaza boulevard
building 6, suite 100
greenwood village, colorado 80111
p 720.488.2626 f 720.488.2625

WARE MALCOMB
Leading Design for Commercial Real Estate



ELEVATION NOTES

GENERAL NOTE:
ALL PAINT COLORS & EXTERIOR MATERIALS TO MATCH EXISTING FACILITY.

- 1 EXTERIOR INSULATED PRECAST CONCRETE WALL PANEL (PAINTED)
- 2 PRECAST CONCRETE PANEL - PANEL JOINT
- 3 PRECAST CONCRETE PANEL - 1 1/2" REVEAL
- 4 EXTERIOR BRICK VENEER - RUNNING BOND - COLOR & BRICK TYPE TO MATCH EXISTING
- 5 ALUMINUM STOREFRONT SYSTEM WITH 1" THICK INSULATED GLAZING.
- 6 3 COAT STUCCO - PAINTED TO MATCH EXISTING BUILDING STUCCO FINISH
- 7 STUCCO REVEAL
- 8 PAINTED STEEL TUBE CANOPY TO MATCH EXISTING BUILDING CANOPY SYSTEM
- 9 PROCESS TANK ENCLOSURE - PAINTED PRECAST CONCRETE PANELS TO MATCH BUILDING PANELS. - TANKS TO BE FULLY ENCLOSED
- 10 ARCHITECTURAL METAL FENCING PER HARMONY TECH GUIDELINES
- 11 TANK ENCLOSURE ROOF STRUCTURE - PAINTED STEEL FRAME WITH INTEGRALLY COLORED STANDING SEAM METAL ROOFING
- 12 PROCESS TANKS SCREEN WALL - TANKS CONCEALED BY SCREEN WALL
- 13 POURED IN PLACE CONCRETE ACCESS STAIR
- 14 HOLLOW METAL DOOR & FRAME - PAINTED
- 15 CLEAR ANODIZED STOREFRONT CLERESTORY WINDOW
- 16 POURED IN PLACE CONCRETE RAMP - PAINT EXTERIOR FACE TO MATCH BUILDING FIELD COLOR
- 17 PAINTED STEEL GUARD RAIL
- 18 EXTERIOR RUBBER TRUCK BUMPER
- 19 PAINTED STEEL GUARD RAIL - REMOVEABLE
- 20 FACTORY FINISHED SECTIONAL OVERHEAD DOOR
- 21 10" X 10" OPEN FACED OVERFLOW DOWNSPOUT WITH 8" RD. DOWNSPOUT PAINTED TO MATCH BUILDING
- 22 KNOCK OUT PANEL FOR FUTURE OPENINGS
- 23 LIGHT FIXTURE - RE: PHOTOMETRIC