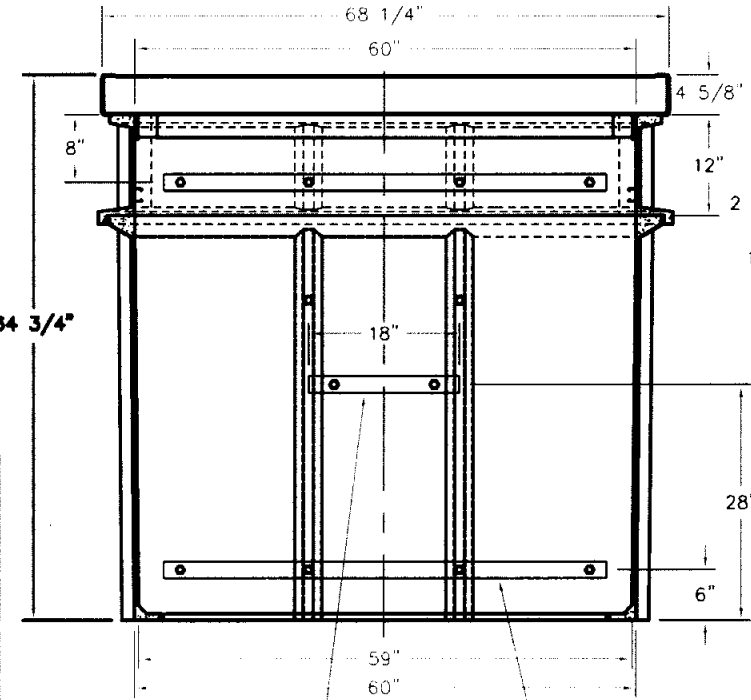
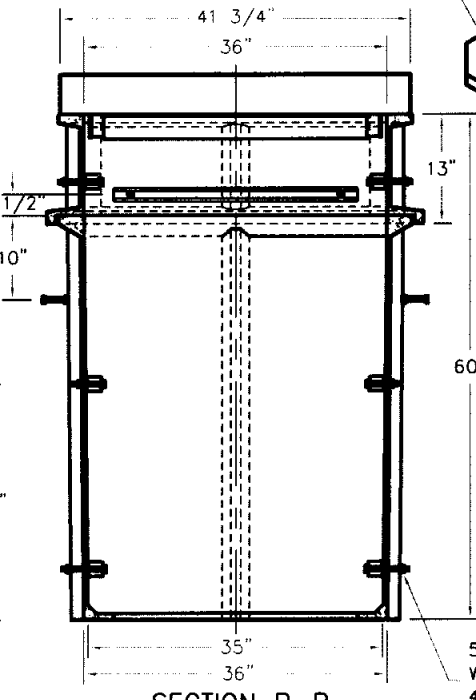


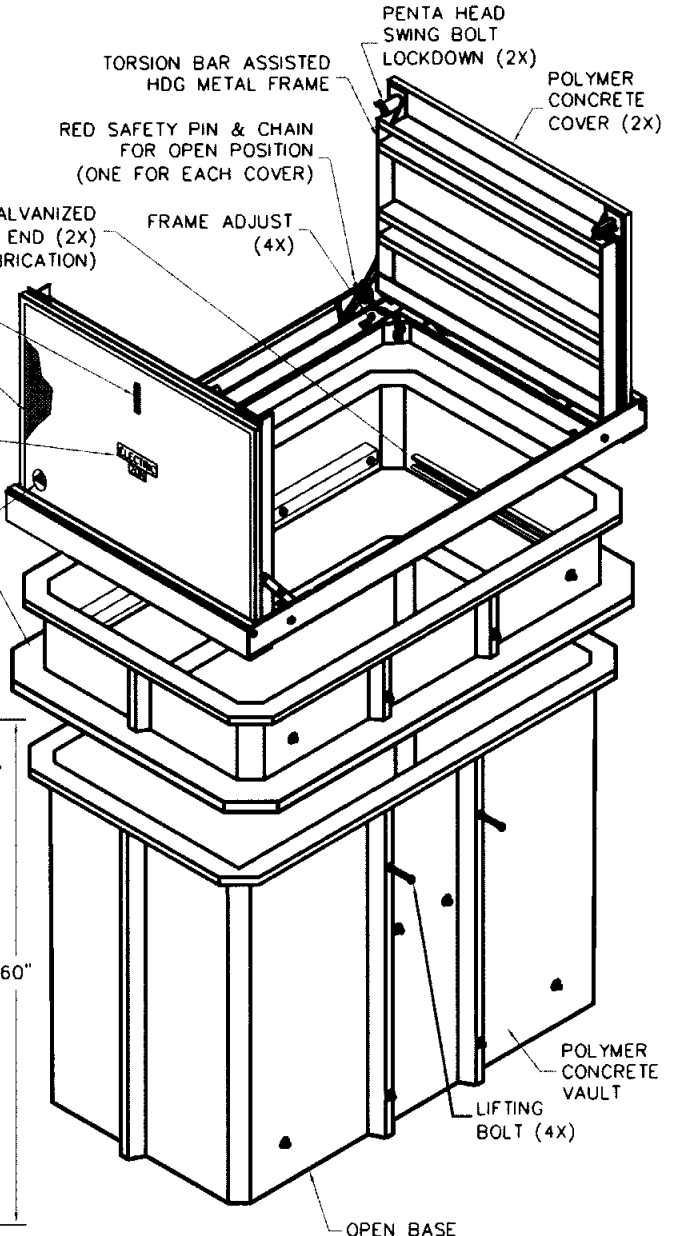
TOP VIEW W/OUT THE COVER



SECTION A-A



SECTION B-B



2" X 2" X 1/4" X 18" LONG FIBERGLASS SQUARE TUBING (2X)

2" X 2" X 1/4" X 53" LONG FIBERGLASS SQUARE TUBING (4X)

		13230 Salford Street, North Hollywood, CA 91605 (818) 982-3800		PART DESCRIPTION <b>36" X 60" X 60" RPM VAULT ASSEMBLY W/TORSION ASSIST COVER</b>	
CUSTOMER <b>FORT COLLINS UTILITIES</b>				MAX LOAD <b>20K</b>	
DRAWN <b>OA</b>	DATE <b>1/04</b>	SCALE <b>NONE</b>	DRAWING NUMBER <b>AC001833TA60FCU</b>		
THE INFORMATION IN THIS DRAWING IS CONFIDENTIAL. THE DRAWING IS NOT TO BE REPRODUCED OR ITS CONTENTS DISCLOSED IN ANY MANNER WHATSOEVER EXCEPT WITH THE PRIOR WRITTEN APPROVAL OF ARMORCAST PRODUCTS COMPANY. IT IS THE PROPERTY OF ARMORCAST PRODUCTS COMPANY.				APPROV	

Part No. A6-1833TA60MT-FORT COLLINS