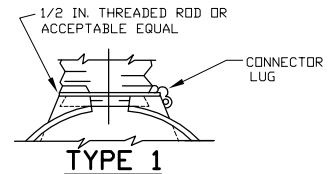
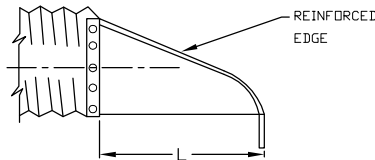
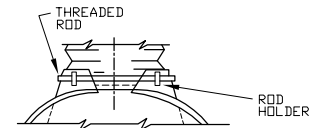


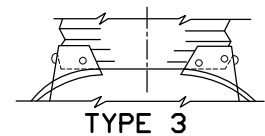
PIPE DIA. IN.	THICKNESS IN.	D I M E N S I O N S					
		A (1 ±) IN.	B (MAX.) IN.	H (1 ±) IN.	L (1 1/2 ±) IN.	W (2 ±) IN.	T IN.
12	.064	6	6	6	21	24	34
15	.064	7	8	6	26	30	40
18	.064	8	10	6	31	36	46
21	.064	9	12	6	36	42	52
24	.079	10	13	8	41	48	58
30	.079	12	16	9	51	60	70
36	.109	14	19	11	60	72	94
42	.109	16	22	12	69	84	106
48	.109	18	27	12	78	90	112
54	.109	18	30	12	84	102	124
60	.109	18	33	12	87	114	136
66	.109	18	36	12	87	120	142
72	.109	18	39	12	87	126	148
78	.109	18	42	12	87	132	154
84	.109	18	45	12	87	138	160



FOR 12 IN. THRU 24 IN. PIPE WITH ANNULAR CORRUGATIONS. NOT TO BE USED ON HELICALLY FORMED PIPE UNLESS RECORRUGATED.

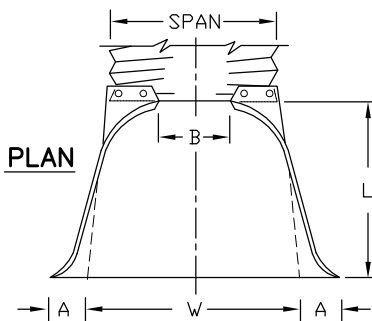


FOR 30 IN. THRU 36 IN. PIPE WITH ANNULAR CORRUGATIONS. NOT TO BE USED ON HELICALLY FORMED PIPE UNLESS RECORRUGATED.



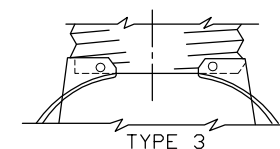
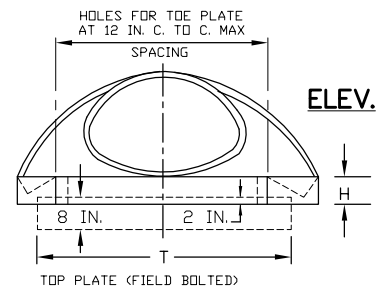
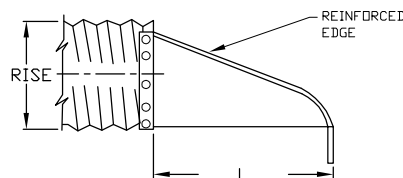
FOR 42 IN. THRU 84 IN. PIPE WITH ANNULAR CORRUGATIONS AND ALL SIZES WITH HELICAL CORRUGATIONS. SHOP ATTACH A 2 FT. MIN. LENGTH OF ANNULAR PIPE WITH GALV. RIVETS OR BOLTS, SPOT WELDS, OR 2 LONG SKIP WELDS ON 8 IN. CTRS. REPAIR BURNT GALV. PER SPECS.

### END SECTION AND CONNECTION DETAILS FOR ROUND CORRUGATED METAL PIPE CULVERTS



### END SECTION AND CONNECTION DETAILS FOR CORRUGATED METAL PIPE ARCH CULVERTS

PIPR ARCH		THICKNESS IN.	D I M E N S I O N S					
SPAN-RISE IN. IN.	IN.		A (1 ±) IN.	B (MAX.) IN.	H (1 ±) IN.	L (1 1/2 ±) IN.	W (2 ±) IN.	T IN.
17 X 13	.064	7	9	6	19	30	40	
21 X 15	.064	7	10	6	23	36	46	
24 X 18	.064	8	12	6	28	42	52	
28 X 20	.064	9	14	6	32	48	58	
35 X 24	.079	10	16	6	39	60	70	
42 X 29	.079	12	18	8	46	75	85	
49 X 33	.109	13	21	9	53	85	103	
57 X 38	.109	18	26	12	63	90	108	
64 X 43	.109	18	30	12	70	102	120	
71 X 47	.109	18	33	12	77	114	132	



FOR ALL SIZES OF ARCH PIPE WITH ANNULAR OR HELICAL CORRUGATIONS)

### GENERAL NOTES:

1. REVISED CDDH M-603-10.
2. END SECTIONS FOR PIPE ARCHES SHALL BE SHOP ATTACHED TO A MINIMUM 2 FT. OF PIPE WITH GALVANIZED RIVETS OR BOLTS, OR BY WELDING.
3. END SECTIONS FOR CMP ARCH CULVERT SHALL MATCH THE DIMENSIONS OF THE CULVERT SHALL PLANS.
4. GALVANIZED TOE PLATE AS SHOWN WILL BE REQUIRED ON BE SAME THICKNESS AS END SECTIONS. TOE PLATE SHALL BE FIELD BOLTED TO END SECTION WITH 3/8 IN. GALVANIZED BOLTS, NUTS AND WASHERS.
5. GALVANIZING SHALL BE IN ACCORDANCE WITH AASHTO M-111.

## METAL END SECTIONS



CITY OF  
FORT COLLINS  
UTILITIES  
FORT COLLINS, CO.  
(970) 221-6700

STORMWATER  
CONSTRUCTION DETAILS

APPROVED:

DATE: 02/02/01

DRAWN BY: NBJ

DETAIL

D-16