



Information Technology
Geographic Information Services

TO: US Postal Service
Xcel Energy
CenturyLink
Comcast
Poudre Fire Authority
Larimer County Elections Department
Larimer County Assessor
Fort Collins City Clerk
Fort Collins Utilities
Fort Collins Police Services
Fort Collins Building Services

FROM: City of Fort Collins, GIS Department

RE: Address Change Memorandum

DATE: December 10, 2015

This letter is to confirm an address change for 1912 Laporte Ave (parcel number: 9710211002). The construction of the Laporte Solar Array has shifted the site's access to N Taft Hill Rd.

As indicated on the attached map, the property is now addressed **320 N Taft Hill Rd, Fort Collins, CO 80521**.

Please update your records to reflect this change.

Thank you for your cooperation.

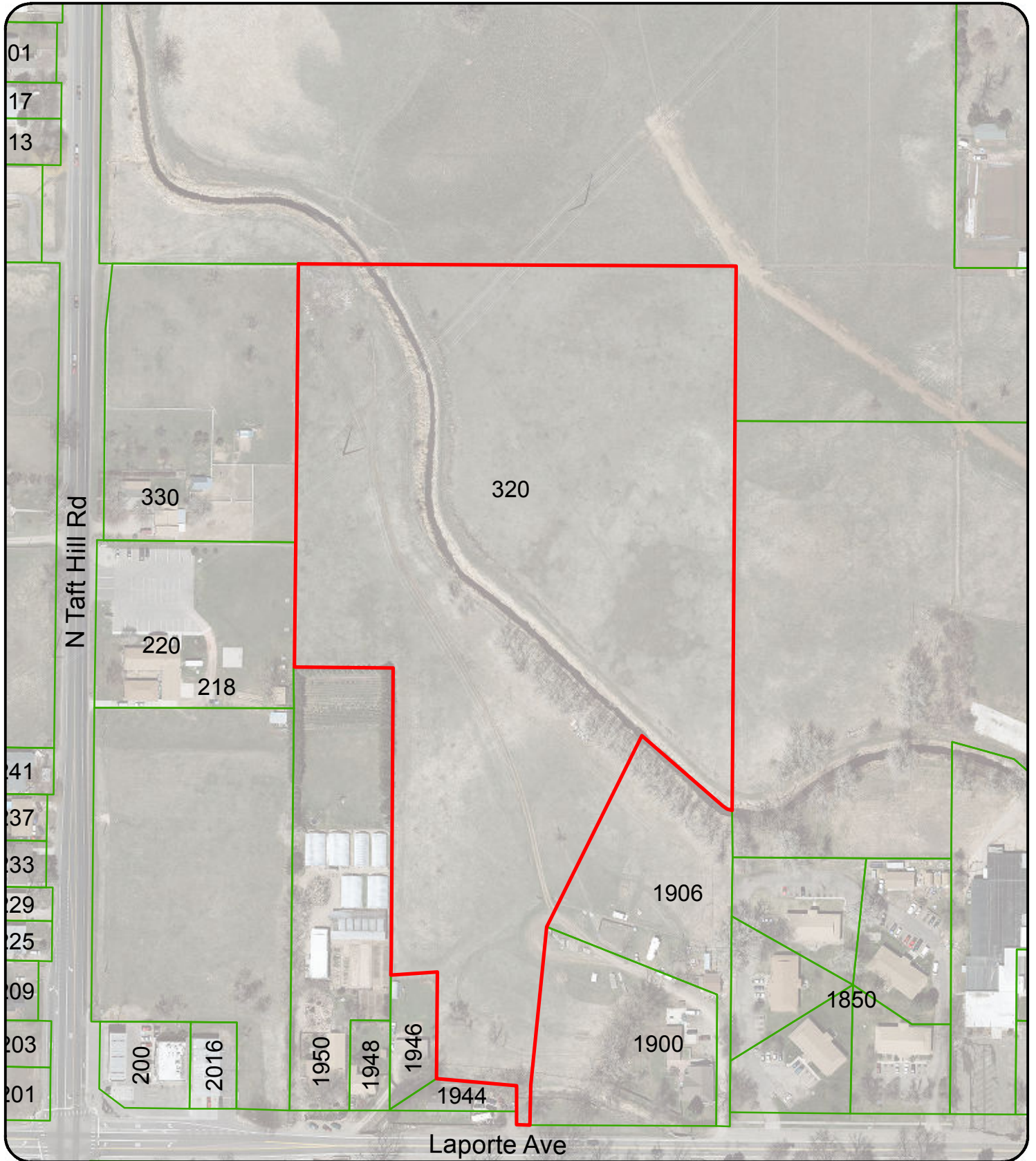
Sincerely,

A handwritten signature in black ink, appearing to read "Todd Reidenbach".

Todd Reidenbach
GIS Mapping Specialist

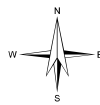
320 N Taft Hill Rd

Fort Collins, CO 80521

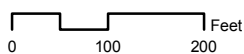


**CITY OF FORT COLLINS
GEOGRAPHIC INFORMATION SYSTEM MAP PRODUCTS**

These map products and all underlying data are developed for use by the City of Fort Collins for its internal purposes only, and were not designed or intended for general use by members of the public. The City makes no representation or warranty as to its accuracy, timeliness, or completeness, and in particular, its accuracy in labeling or displaying dimensions, contours, property boundaries, or placement of location of any map features thereon. THE CITY OF FORT COLLINS MAKES NO WARRANTY OF MERCHANTABILITY OR WARRANTY FOR FITNESS OF USE FOR PARTICULAR PURPOSE, EXPRESSED OR IMPLIED, WITH RESPECT TO THESE MAP PRODUCTS OR THE UNDERLYING DATA. Any users of these map products, map applications, or data, accept them AS IS, WITH ALL FAULTS, and assumes all responsibility of the use thereof, and further covenants and agrees to hold the City harmless from and against all damage, loss, or liability arising from any use of this map product, in consideration of the City's having made this information available. Independent verification of all data contained herein should be obtained by any users of these products, or underlying data. The City disclaims, and shall not be held liable for any and all damage, loss, or liability, whether direct, indirect, or consequential, which arises or may arise from these map products or the use thereof by any person or entity.



Scale 1:2,400



- Site
- Parcels



Printed: December 16, 2015