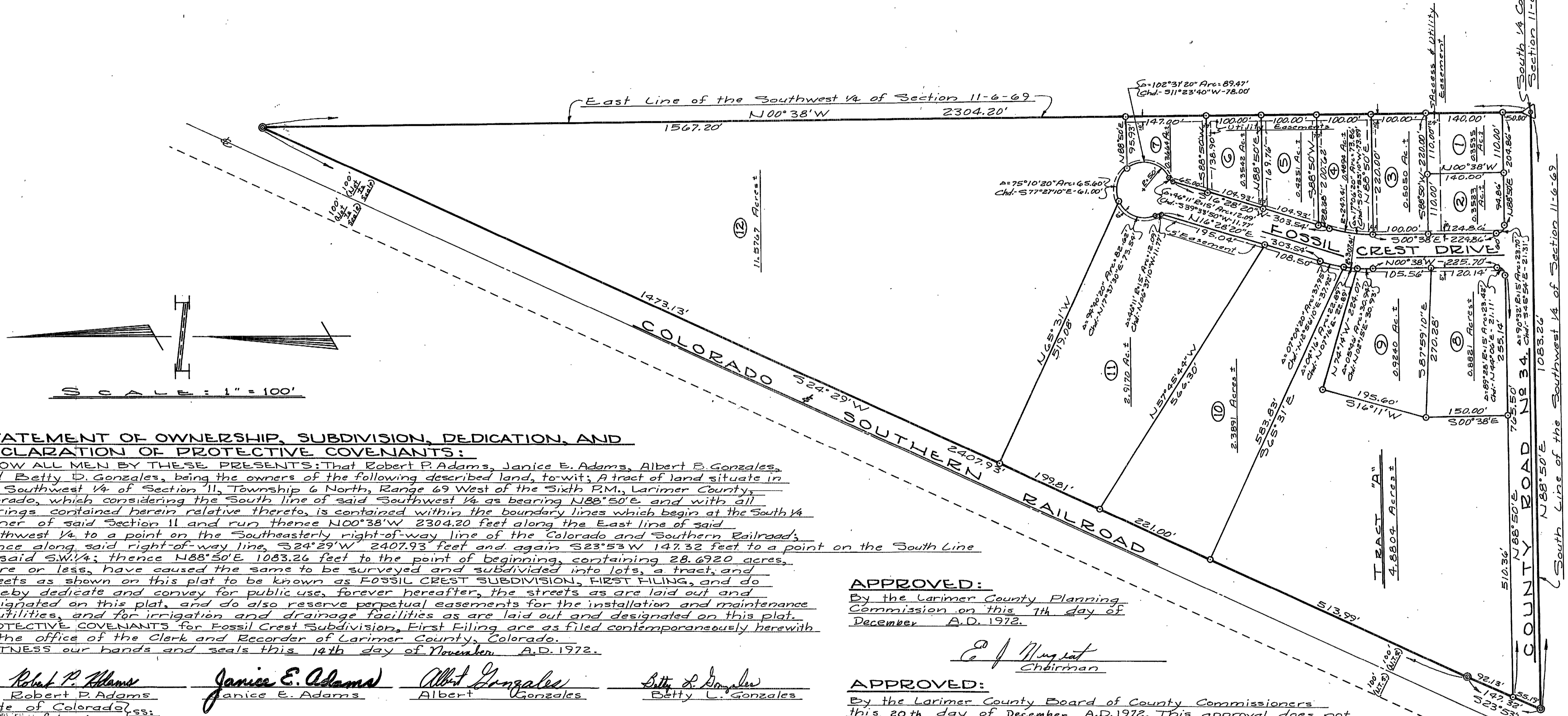


PLAT OF FOSSIL CREST SUBDIVISION FIRST FILING

SITUATE IN THE SOUTHWEST 1/4 OF SECTION 11, TOWNSHIP 6 NORTH, RANGE 69 WEST OF THE SIXTH P.M., LARIMER COUNTY, COLORADO

F-166 2666 X

DRAWING NUMBER
SAFCO PRODUCTS • NEW HOPE, MINNESOTA
REORDER BY PART NUMBER 888E
DRAWING NUMBER
SAFCO PRODUCTS • NEW HOPE, MINNESOTA
REORDER BY PART NUMBER 888E
DRAWING NUMBER
SAFCO PRODUCTS • NEW HOPE, MINNESOTA
REORDER BY PART NUMBER 888E
NUMBER
SAFCO PRODUCTS • NEW HOPE, MINNESOTA
REORDER BY PART NUMBER 888E



STATEMENT OF OWNERSHIP, SUBDIVISION, DEDICATION, AND DECLARATION OF PROTECTIVE COVENANTS:

KNOW ALL MEN BY THESE PRESENTS: That Robert P. Adams, Janice E. Adams, Albert B. Gonzales, and Betty L. Gonzales, being the owners of the following described land, to-wit: A tract of land situate in the Southwest 1/4 of Section 11, Township 6 North, Range 69 West of the Sixth P.M., Larimer County, Colorado, which considering the South line of said Southwest 1/4 as bearing N88°50'E and with all bearings contained herein relative thereto, is contained within the boundary lines which begin at the South 1/4 corner of said Section 11 and run thence N00°38'W 2304.20 feet along the East line of said Southwest 1/4 to a point on the Southeastly right-of-way line of the Colorado and Southern Railroad; thence along said right-of-way line, S24°29'W 2407.93 feet and again S23°53'W 147.32 feet to a point on the South Line of said SW 1/4; thence N88°50'E 1083.26 feet to the point of beginning, containing 28.6920 acres, more or less, have caused the same to be surveyed and subdivided into lots, a tract, and streets as shown on this plat to be known as FOSSIL CREST SUBDIVISION, FIRST FILING, and do hereby dedicate and convey for public use, forever hereafter, the streets as are laid out and designated on this plat, and do also reserve perpetual easements for the installation and maintenance of utilities, and for irrigation and drainage facilities as are laid out and designated on this plat. PROTECTIVE COVENANTS for Fossil Crest Subdivision, First Filing are as filed contemporaneously herewith in the office of the Clerk and Recorder of Larimer County, Colorado.

WITNESS our hands and seals this 14th day of November, A.D. 1972.

Robert P. Adams Janice E. Adams Albert Gonzales Betty L. Gonzales
 Robert P. Adams Janice E. Adams Albert Gonzales Betty L. Gonzales
 State of Colorado, ss: County of Larimer,

That foregoing instrument was acknowledged before me on this 14th day of November, A.D. 1972, by Robert P. Adams, Janice E. Adams, Albert Gonzales, and Betty L. Gonzales.

James H. Stewart
 Notary Public
 My notarial commission expires November 8, 1975

ENGINEER'S CERTIFICATE:

James H. Stewart, a Professional Engineer and Land Surveyor under the laws of the State of Colorado, being duly sworn on his oath, deposes and says, that the survey and plat of Fossil Crest Subdivision, First Filing were made under his supervision, that said plat is an accurate delineation of said survey, that he has read the statements thereon and that the same are true of his own knowledge.

James H. Stewart
 James H. Stewart
 Professional Engineer & Land Surveyor

Subscribed and sworn to before me this 14th day of November, A.D. 1972.

James H. Stewart
 Notary Public
 My notarial commission expires November 8, 1975

APPROVED:
 By the Larimer County Planning Commission on this 1th day of December, A.D. 1972.

E. J. Nugent
 Chairman

APPROVED:
 By the Larimer County Board of County Commissioners this 20th day of December, A.D. 1972. This approval does not constitute acceptance by the Board of County Commissioners of the County of Larimer of any dedication to public use of the streets, highways, alleys, or other property contained in the plat, and until such acceptance shall be made, the County of Larimer assumes no responsibility for the construction, repair, or maintenance of the streets, highways, alleys, or other properties laid out and dedicated herein.

William W. Law
 Chairman

APPROVED:
 By the Larimer County Health Authority this 20th day of December, A.D. 1972. All construction on this subdivision, or any lot thereon, including the development of domestic water and the disposition of sewage disposal, shall be done in a manner which will meet all the requirements of the Colorado Department of Health and the Larimer County Public Health Department and the officers authorized to enforce such requirements.

Arthur E. Lusk
 Larimer County Health Authority

NOTE:
 Access to Lots 2 and 8 shall be from Fossil Crest Drive only.

Annexed County Subdivision