

TYPE: AA2, AASL

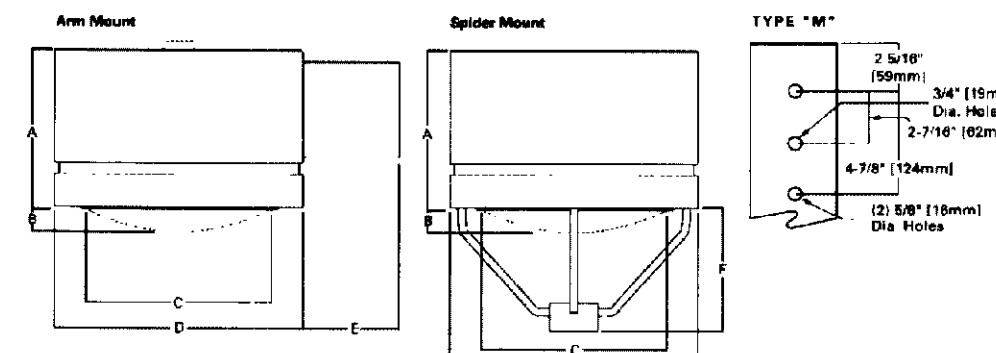
DESCRIPTION

Galleria's beauty and versatility make it an excellent choice for roadway and general area lighting applications. An aesthetic reveal in the formed aluminum housing gives the Galleria a distinctive look while a variety of mounting options and lamp wattages provide maximum flexibility.

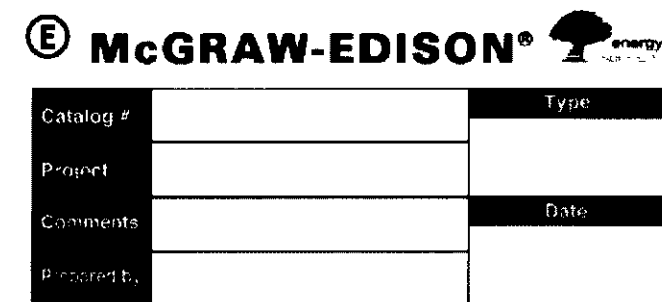
SPECIFICATION FEATURES

Construction HOUSING: Formed aluminum housing with stamped reveal has interwoven seams for structural integrity and is finished in premium TFC polyester powder coat. U.L. listed and CSA certified for wet locations. DOOR: Formed aluminum door has heavy-duty hinges, captive retaining screw and is finished in premium TFC polyester powder coat. (Solder mount unit has steel door)

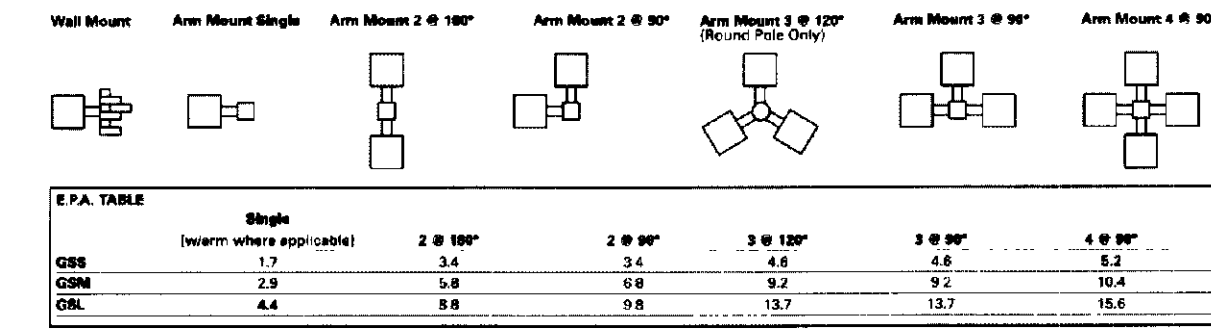
DIMENSIONS



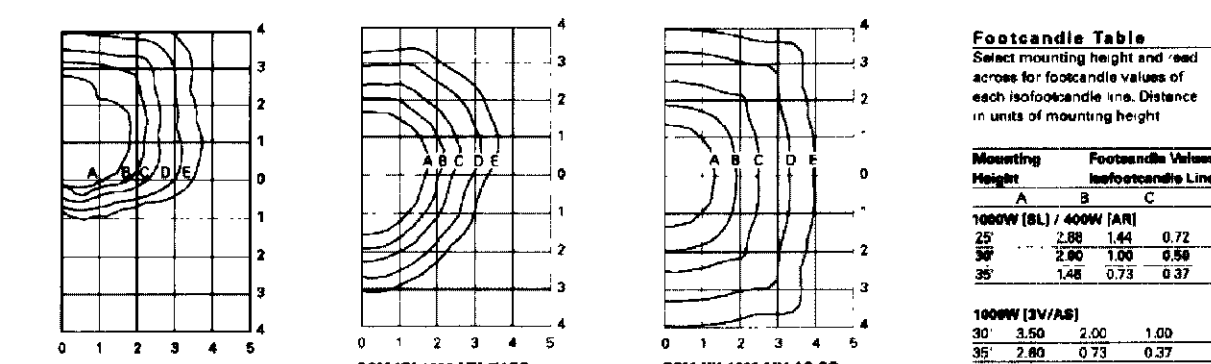
Tables for WATTAGE TABLE and ENERGY DATA, listing lamp types, wattages, and energy consumption metrics.



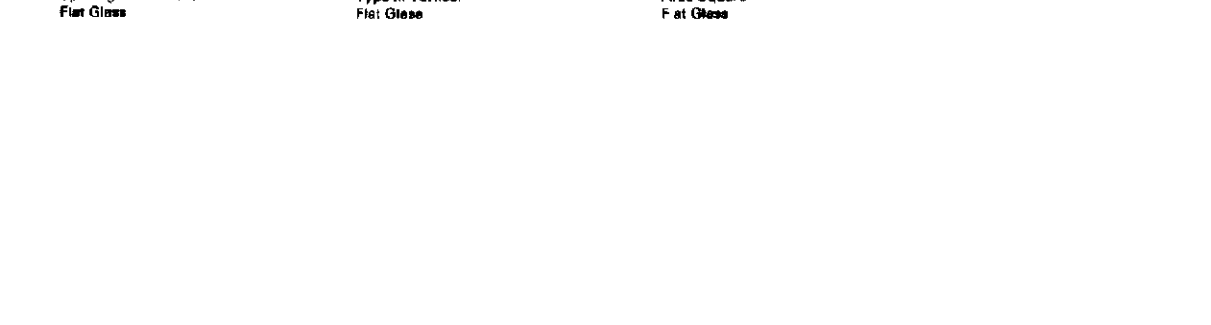
MOUNTING CONFIGURATIONS



PHOTOMETRICS



Tables for E.P.A. TABLE and FOOTCANDLE TABLE, providing data on beam spread and footcandle output.



Tables for WATTAGE TABLE and ENERGY DATA, listing lamp types, wattages, and energy consumption metrics.

TYPE: WW

McGraw-Edison

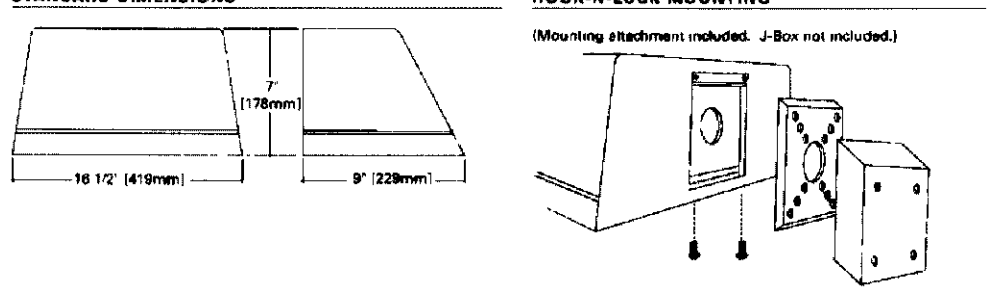
DESCRIPTION

The IMPACT Elite Trapezoid wall luminaire makes an ideal complement to site design. Rugged construction and full cutoff classified optics provide facade and security lighting for light controlled zones surrounding schools, office complexes, apartments, and recreational facilities. U.L. and cUL Listed for wet locations in down mount applications and damp locations in up mounted applications.

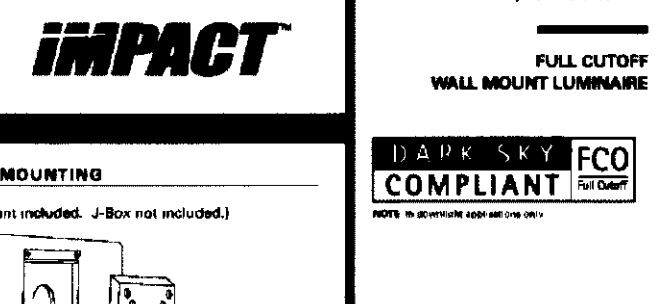
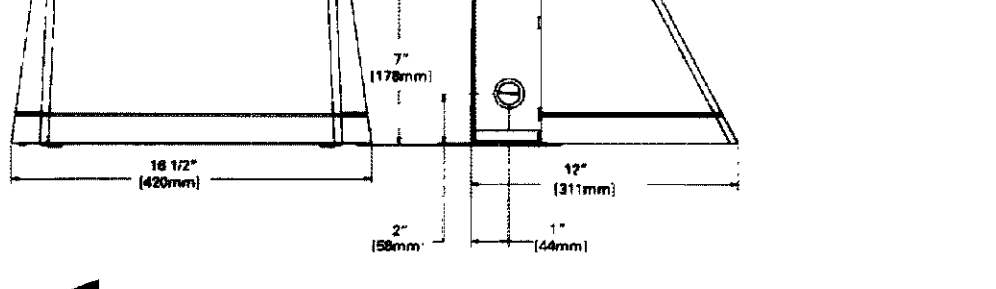
SPECIFICATION FEATURES

Construction Two-piece die-cast aluminum housing and removable hood door frame meets securely for precise tolerance control and reusability. Hinged door frame inset for clean mating with housing surface and secured via two (2) captive stainless steel fasteners.

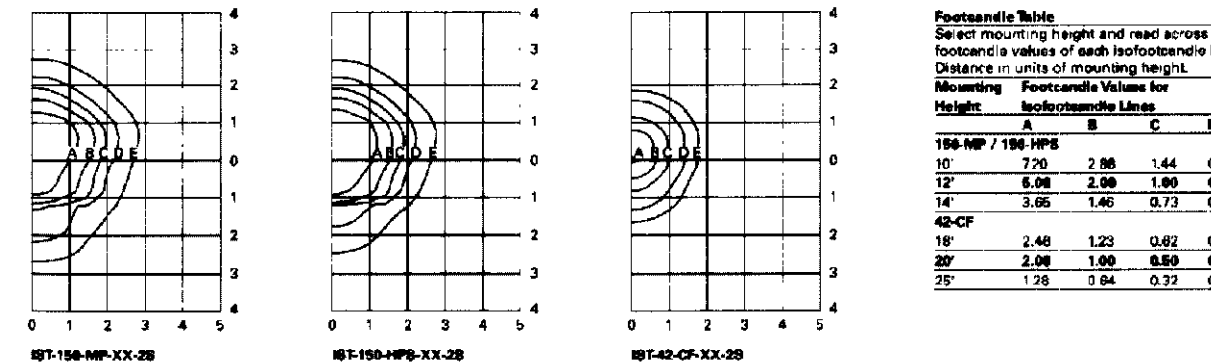
STANDARD DIMENSIONS



DIMENSIONS WITH BACK BOX



PHOTOMETRICS (Complete IES files available at www.coeoptlighting.com)



Tables for ORDERING INFORMATION and ENERGY DATA, listing product details and energy consumption.

Tables for ORDERING INFORMATION and ENERGY DATA, listing product details and energy consumption.

Tables for ORDERING INFORMATION and ENERGY DATA, listing product details and energy consumption.

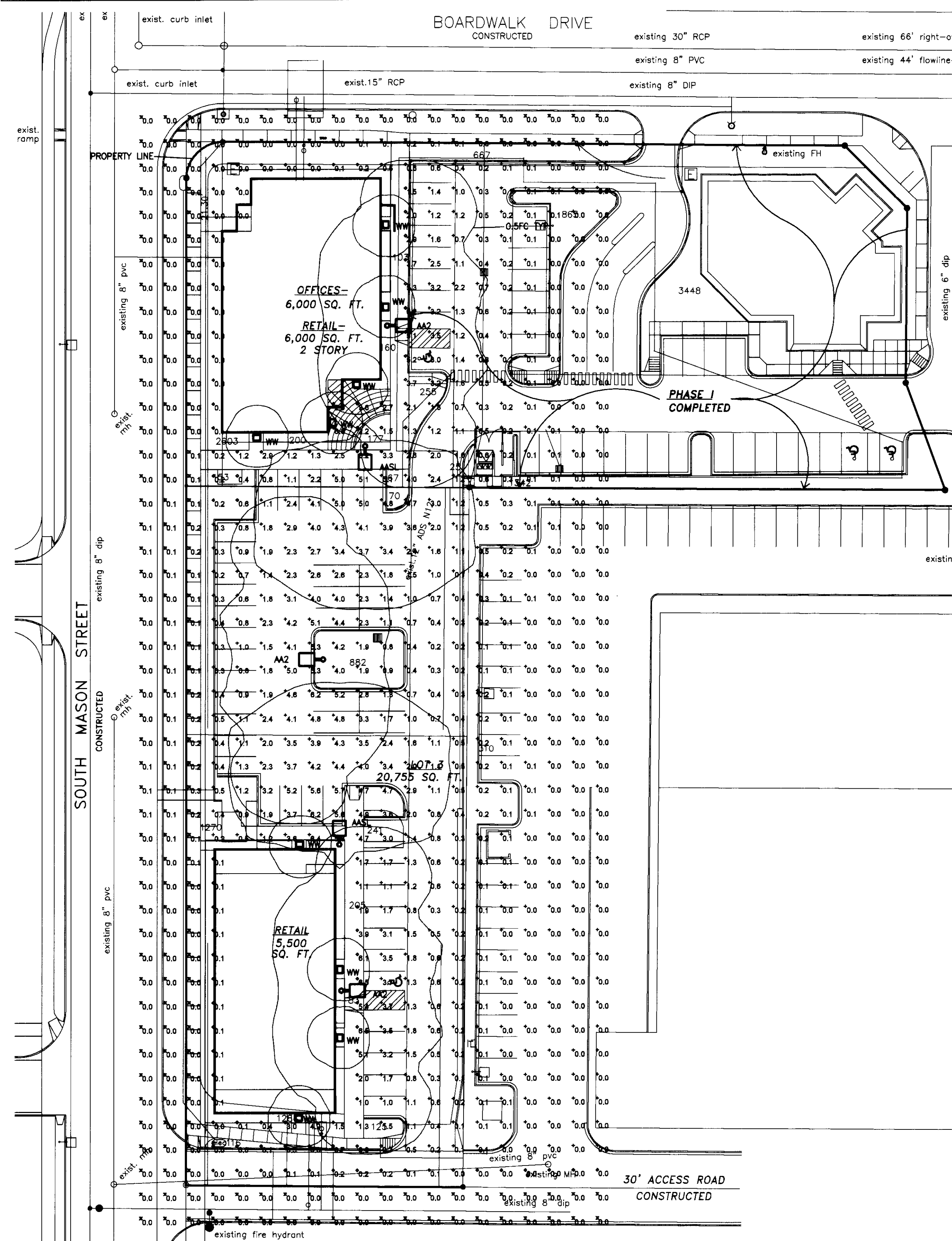
Tables for ORDERING INFORMATION and ENERGY DATA, listing product details and energy consumption.

McGraw-Edison logo and contact information for the WW luminaire.

LUMINAIRE SCHEDULE table listing luminaire symbols, labels, quantities, catalog numbers, descriptions, lamp types, files, lumens, LLF, and watts.

STATISTICS table showing description, symbol, average, maximum, minimum, max/min, and avg/min values.

LUMINAIRE LOCATIONS table listing luminaire numbers, labels, mounting heights, and tilt angles.



SITE PHOTOMETRIC PLAN SCALE: 1"=30'-0"

SRB CONSULTING ENGINEERING MECHANICAL-ELECTRICAL-PLUMBING

37127 Cullison Ridge Road Windsor, CO 80880

PH: 970.686.1004 FAX: 970.427.3189 Email: erblc@westnet.com

Table with columns for NO., REVISION, and DATE, used for tracking drawing changes.

IT IS A VIOLATION OF COLORADO STATE LAW FOR ANY PERSON, UNLESS ACTING UNDER THE DIRECTION OF A LICENSED PROFESSIONAL ENGINEER, TO ALTER ANY ITEM ON THIS DRAWING AND/OR RELATED SPECIFICATIONS. ALL ALTERATIONS MUST BE MADE IN COMPLIANCE WITH COLORADO STATE LAW. THE PROFESSIONAL ENGINEER WHOSE SEAL APPEARS HEREON ASSUMES NO RESPONSIBILITY FOR ANY SUCH ALTERATION OR RE-USE WITHOUT HIS WRITTEN CONSENT.

CLIENT: ARCHITECTURE WEST, L.L.C. 4710 S. COLLEGE AVE. FT. COLLINS, CO

PROJECT TITLE: BOARDWALK CROSSING AT MASON STREET PROJECT DEVELOPMENT PLAN / FINAL DEVELOPMENT PLAN

DRAWING TITLE: SITE PHOTOMETRIC PLAN

DRAWN BY: CW, DESIGNED BY: CW, CHECKED BY: LS, CAD FILENAME: E1.01 SITE PHOTOMETRIC 13016

SCALE: AS NOTED, DATE: 4/16/13, PROJECT NO: 13016