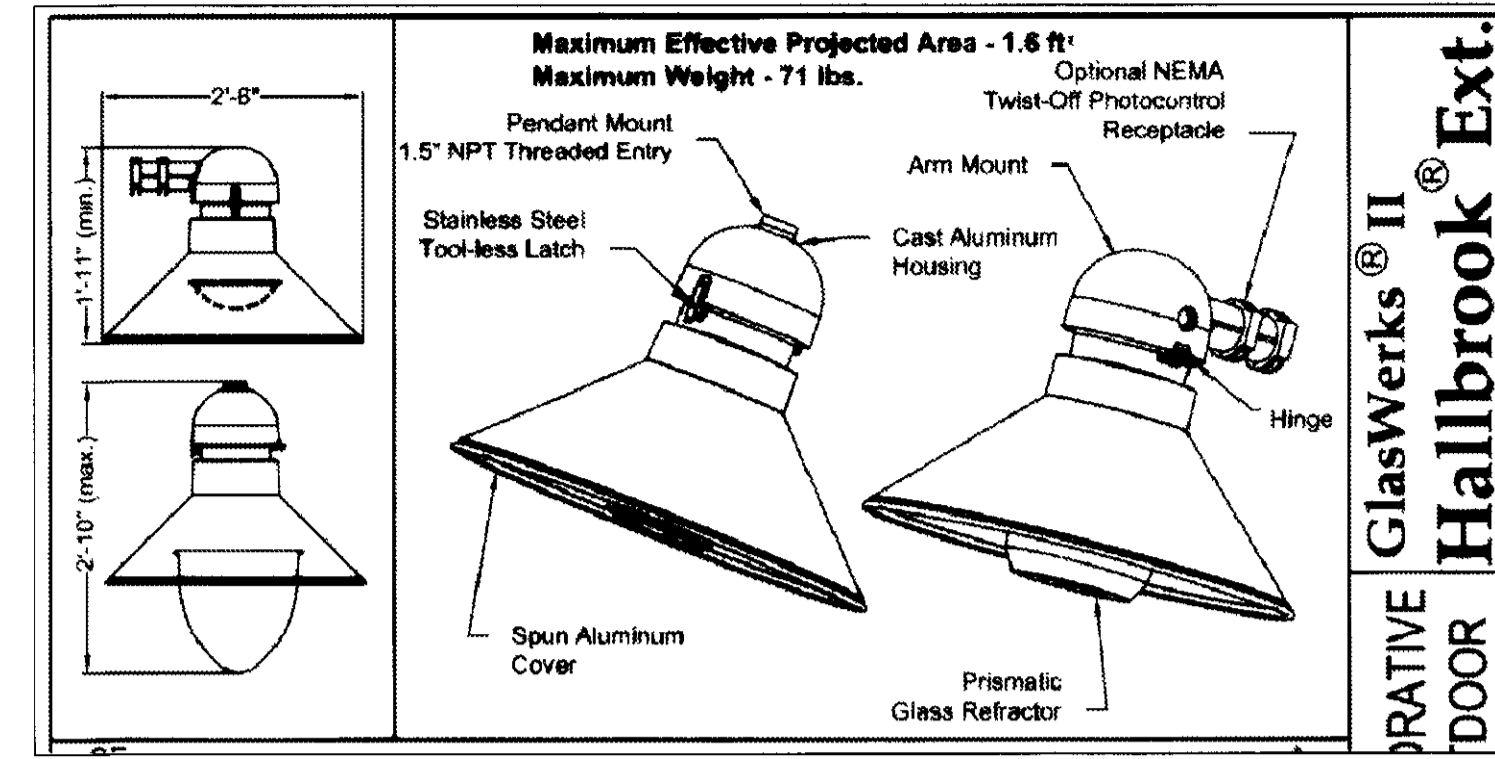
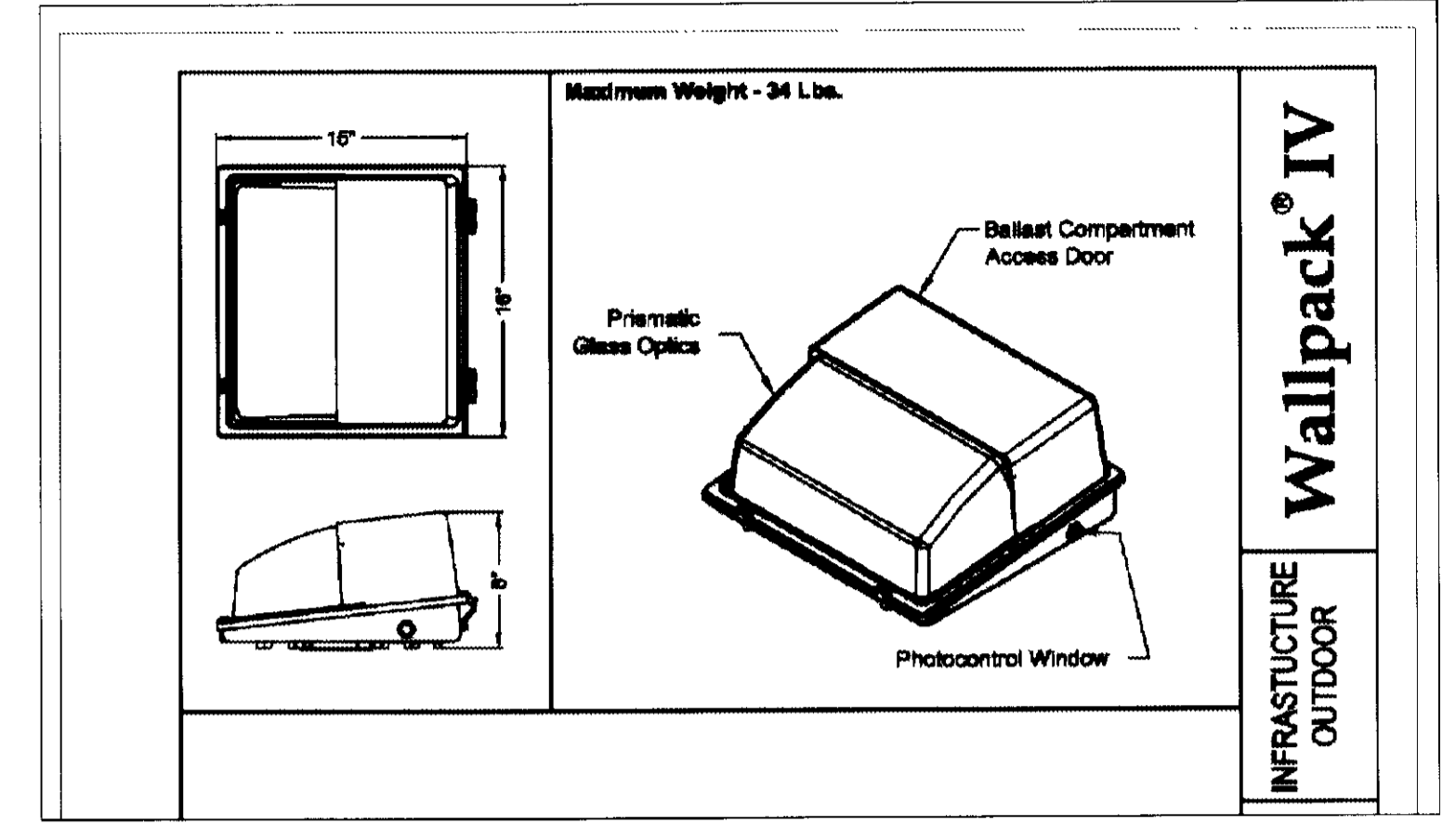


**A** LIGHTING PLAN  
SCALE: 1"=50'-0"

LUMINAIRE SCHEDULE



- NOTES:  
 1. SEE DETAIL B AND C, THIS SHEET FOR LIGHT DIMENSIONS  
 2. WALL PACK ONLY USED AT LOADING DOCK AREA AT SUPPORT BUILDING 1 AND 2  
 3. GLASWERKS II HALLBROOK EXT. OR EQUAL  
 4. WALLPACK IV OR EQUAL



LUMINAIRE SCHEDULE

Symbol	Label	Qty	Catalog Number	Description	Lamp	File	Lumens	LLF	Watts
●	A	74	GE175PM000XS55 N	GLASWERKS II HALLBROOK EXTENDED	175W CLEAR PMH	GE175MH000X S55N.ies	17500	0.76	198
●	B	11	GE175MH000XS55 N	GLASWERKS II HALLBROOK EXTENDED	175W CLEAR PMH	GE175MH000X S55N.ies	17500	0.76	198
□	C	13	W4175PM00SX	HOLOPHANE WALLPACK IV @ 12 FT AFG	175W CLEAR PMH	W4175MH00S X.ies	12800	0.76	198
□	D	16	HYDREL 4454 50M LLV	HYDREL STEPLIGHT WITH LOUVER DOOR @ 1 FT AFG	50W CLEAR PMH	4454_50M_LL V.ies	2900	0.70	65

STATISTICS

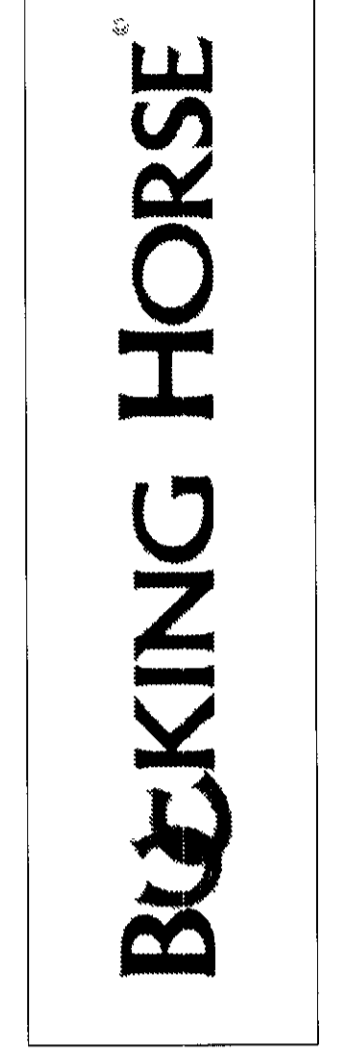
Description	Avg	Max	Min	Max/Min	Avg/Min
Parking & Drive Areas	2.4 fc	13.6 fc	1.0 fc	13.6:1	2.4:1
Ped Area 1	1.5 fc	3.9 fc	0.3 fc	13.0:1	5.0:1
Ped Area 2	2.7 fc	18.4 fc	0.1 fc	184.0:1	27.0:1

NOTES

1. Calculations shown are Maintained Horizontal Footcandles at 0 ft AFG.  
 2. Calculations are based on a Total Light Loss Factor of 0.76 for 175 watt and .70 for 50 watt Metal Halide luminaires.



REV.	COMMENT	DATE



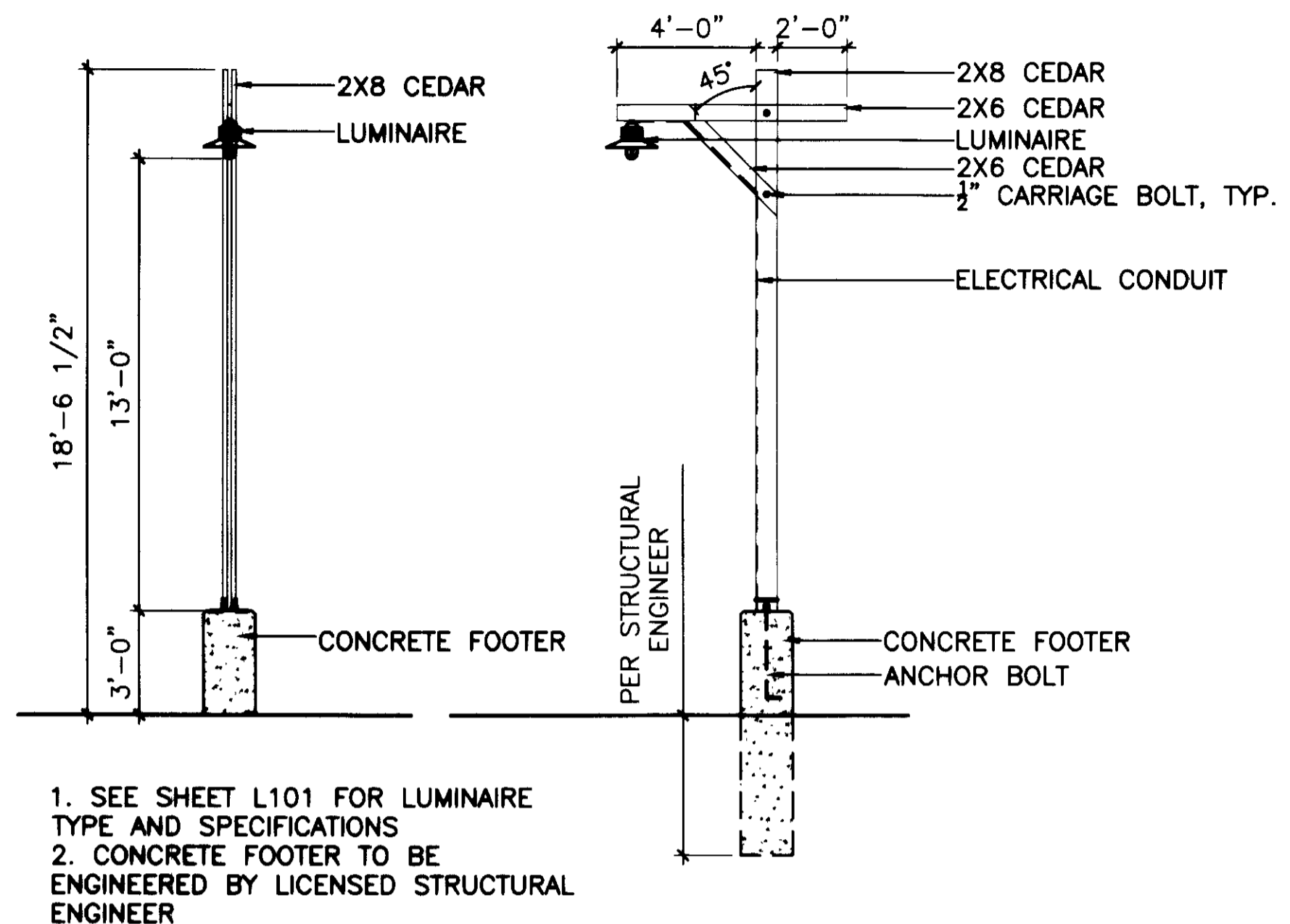
**BELLISIMO**  
 LANDSCAPE ARCHITECTURE & PLANNING  
 BELLISIMO, INC.  
 3702 Manhattan Ave., Suite 201  
 Fort Collins, CO 80526  
 970-229-5900

**m**  
 RUSSELL + MILLS studios  
 141 s. college ave., suite 104  
 fort collins, co 80524  
 p. 970.494.8855  
 www.russellmillsstudios.com

BUCKING HORSE FILING ONE  
 JESSUP FARM ARTISAN VILLAGE  
 LIGHTING PLAN  
 FINAL DEVELOPMENT PLAN

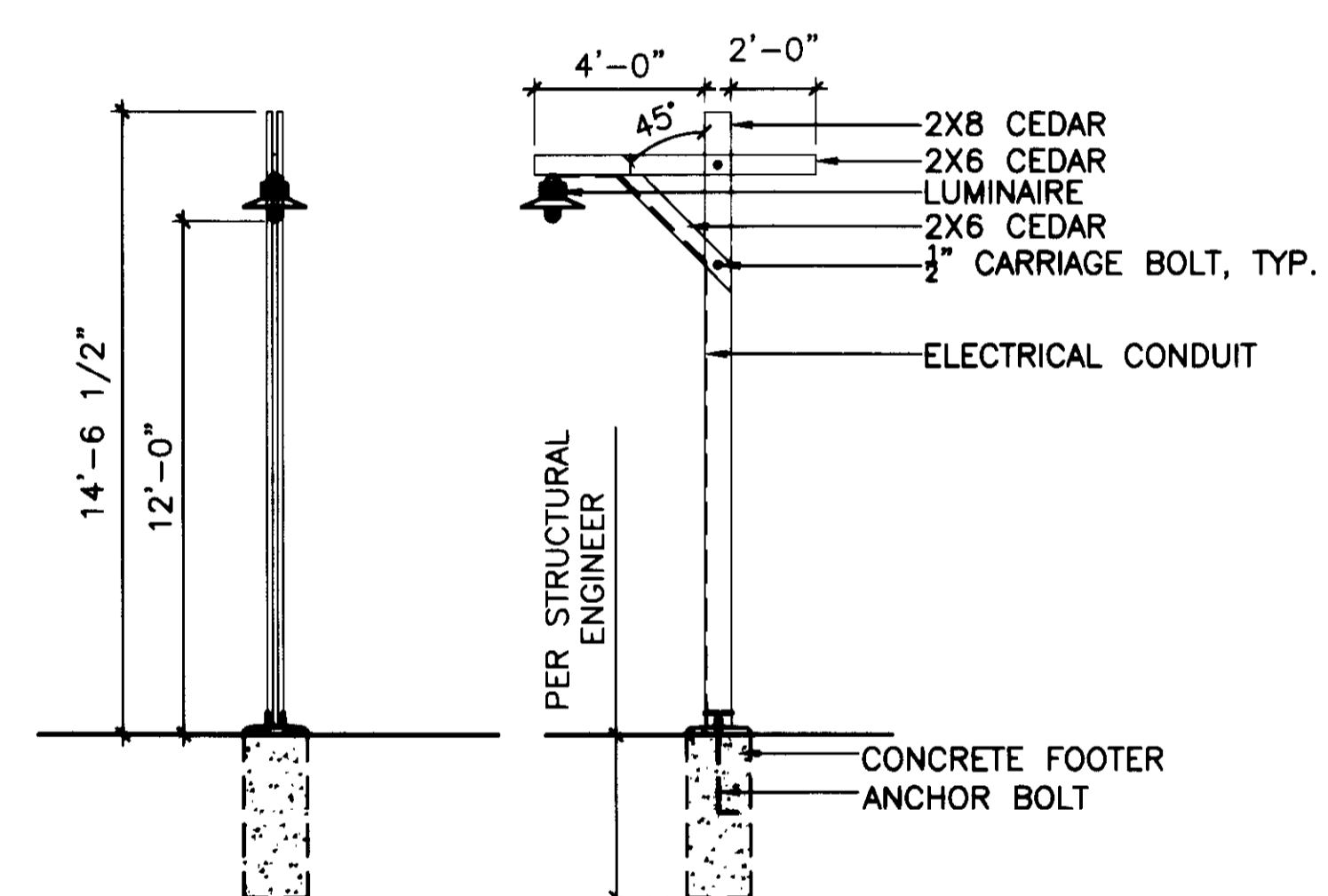
Date: 9/19/2012  
 Drawn By: KT  
 Checked By: CR/PM

This unofficial copy was downloaded on Jul-18-2019 from the City of Fort Collins Public Records Website: <http://citydocs.fgoc.com>  
 For additional information or an official copy, please contact Engineering Office 281 North College Fort Collins, CO 80521 USA.



1. SEE SHEET L101 FOR LUMINAIRE TYPE AND SPECIFICATIONS
2. CONCRETE FOOTER TO BE ENGINEERED BY LICENSED STRUCTURAL ENGINEER

**B** LIGHT - PARKING LOT  
SCALE: 1/4"=1'-0" DT-SHELTER.DWG



1. SEE SHEET L101 FOR LUMINAIRE TYPE AND SPECIFICATIONS
2. CONCRETE FOOTER TO BE ENGINEERED BY LICENSED STRUCTURAL ENGINEER

**C** LIGHT - PEDESTRIAN AREA  
SCALE: 1/4"=1'-0" DT-SHELTER.DWG

REV.	COMMENT	DATE



**BELLISIMO**  
ENGINEERING, ARCHITECTURE & ENVIRONMENT  
BELLISIMO, INC.  
3702 Manhattan Ave., Suite 201  
Fort Collins, CO 80526  
970-229-3900

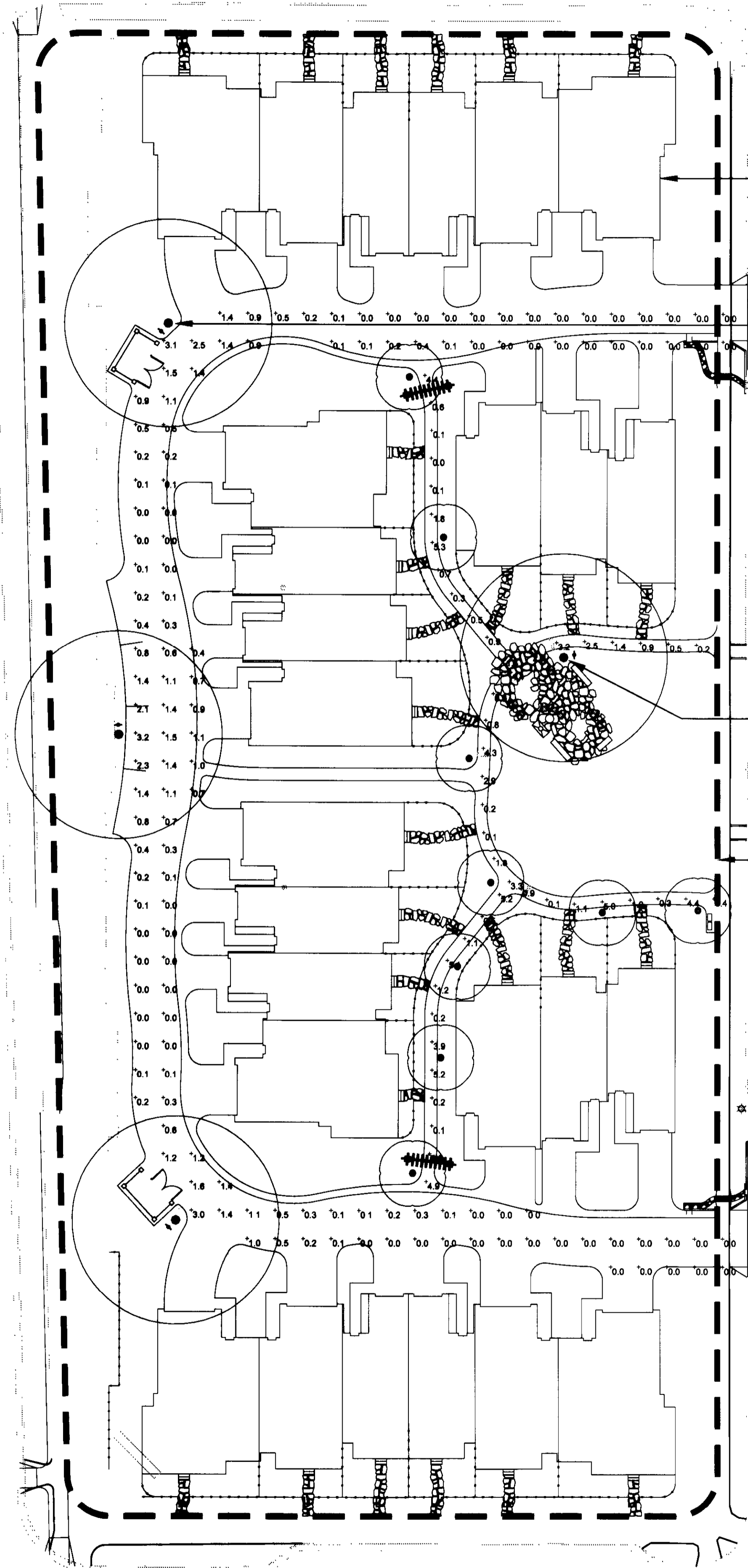
**m** russell+mills studios  
141 s. college ave., suite 104  
fort collins, co 80524  
p: 970-484-8855  
www.russellmillsstudios.com

BUCKING HORSE FILING ONE  
JESSUP FARM ARTISAN VILLAGE  
LIGHTING DETAILS  
FINAL DEVELOPMENT PLAN

Date: 9/19/2012  
Drawn By: KT/SL  
Checked By: CR/PM

This unofficial copy was downloaded on Jul-18-2019 from the City of Fort Collins Public Records Website: <http://citydocs.fg.gov.com>  
For additional information or an official copy, please contact Engineering Office 281 North College Fort Collins, CO 80521 USA.





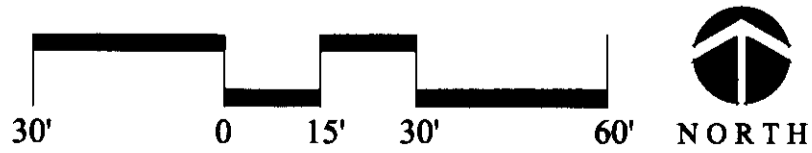
BUILDING FOOTPRINT, TYP.

PROPOSED LIGHT, TYP.

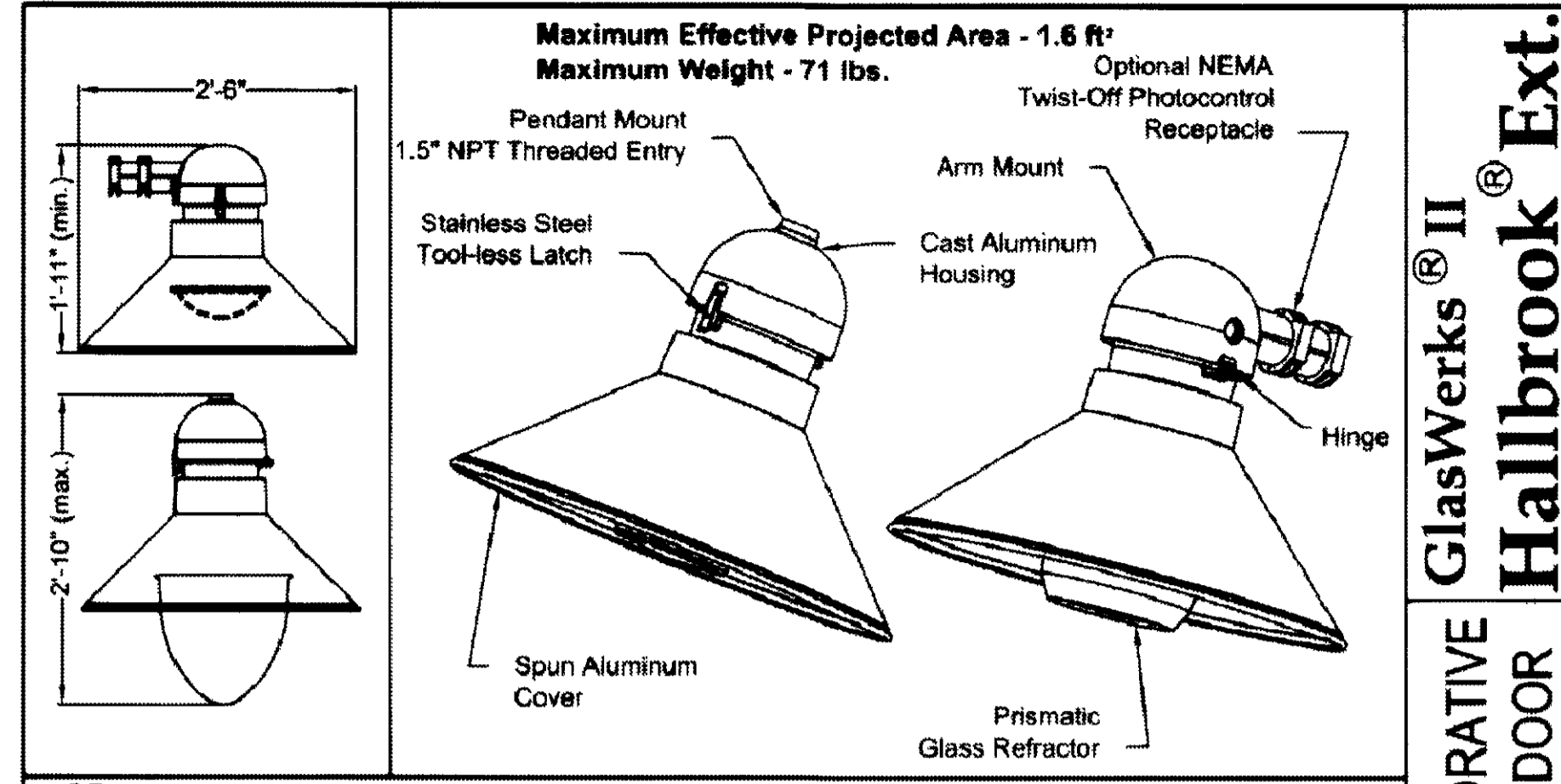
PROPOSED BOLLARD LIGHT, TYP.

LIMIT OF WORK

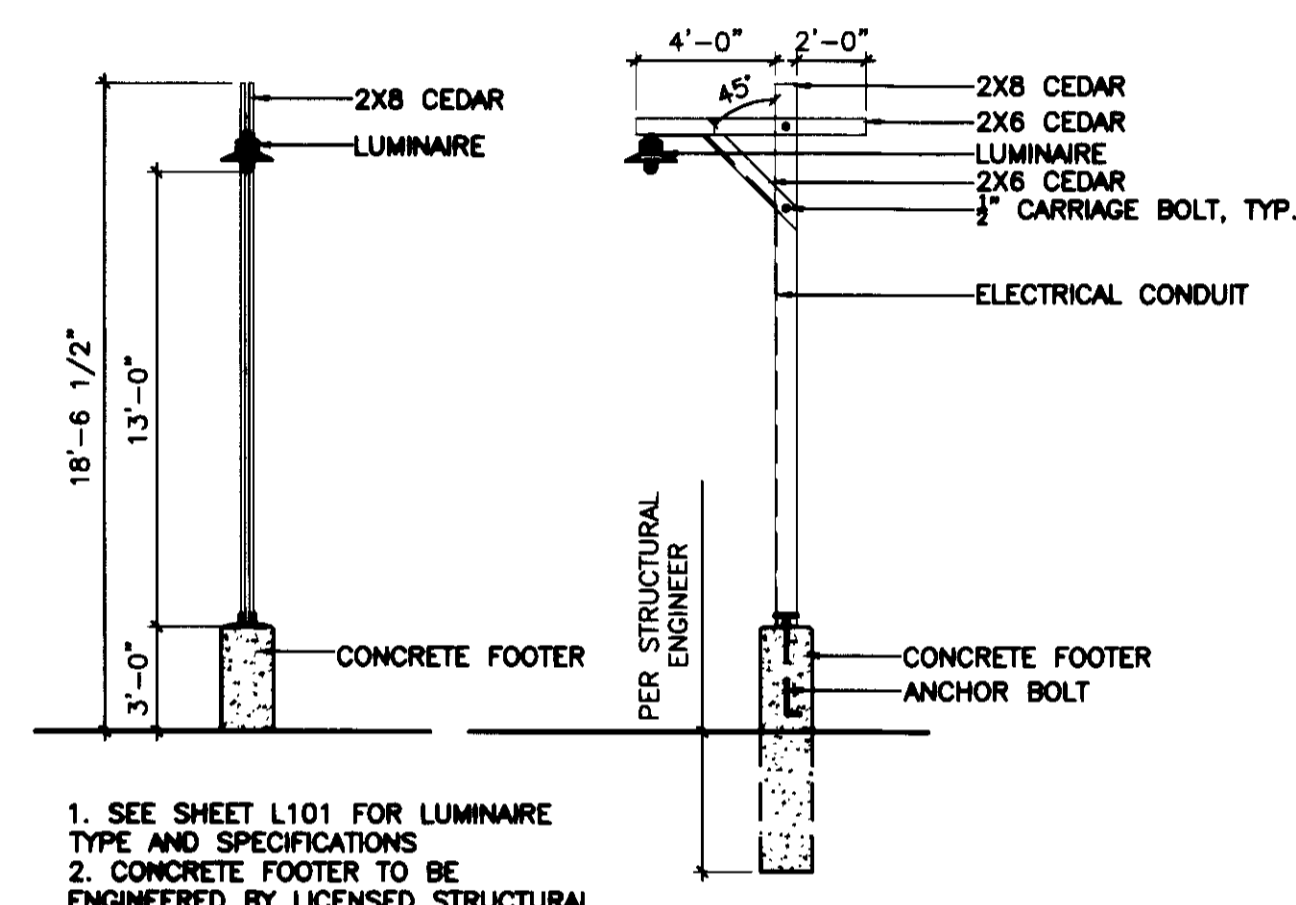
**A** LIGHTING PLAN  
SCALE: 1"=30'-0"



LUMINAIRE SCHEDULE



- NOTES:  
1. SEE DETAIL B, THIS SHEET FOR LIGHT DIMENSIONS.  
2. GLASWERKS II HALLBROOK EXT. OR EQUAL  
3. H101 OR EQUAL



1. SEE SHEET L101 FOR LUMINAIRE TYPE AND SPECIFICATIONS  
2. CONCRETE FOOTER TO BE ENGINEERED BY LICENSED STRUCTURAL ENGINEER

**B** LIGHT - PARKING LOT  
SCALE: 1/4"=1'-0"

LUMINAIRE SCHEDULE

Symbol	Label	Qty	Catalog Number	Description	File	Lumens	LLF	Watts
●	A	13	GE175PM000XS55 N	GLASWERKS II HALLBROOK EXTENDED, 175W CLEAR PMH MOUNTED AT 18 FT	GE175MH000X S55N.ies	17500	0.78	198
□	B	26	H101/H102-100M-SYM	HOLOPHANE H101 LOUVER BOLLARD, SYMMETRIC DISTRIBUTION WITH COATED 100W MH ED-17	H101_H102-100M-SYM.ies	7900	0.70	133.4

STATISTICS

Description	Symbol	Avg	Max	Min	Max/Min	Avg/Min
Block 1 Parking Lower	+	1.5 fc	2.6 fc	1.0 fc	2.6:1	1.5:1
Block 1 Parking Upper	+	1.7 fc	2.1 fc	1.4 fc	1.5:1	1.2:1
Block 3 Walks	+	1.3 fc	5.8 fc	0.0 fc	N/A	N/A
Block 1 Walks	+	1.8 fc	6.0 fc	0.0 fc	N/A	N/A
Block 3 Roadway	+	0.4 fc	2.3 fc	0.0 fc	N/A	N/A
Block 2 Walks	+	1.9 fc	5.3 fc	0.0 fc	N/A	N/A
Block 3 Walk Middle	+	0.8 fc	4.8 fc	0.0 fc	N/A	N/A
Block 1 Parking Lower	+	1.5 fc	2.6 fc	1.0 fc	2.6:1	1.5:1
Block 3 Walks	+	1.3 fc	5.8 fc	0.0 fc	N/A	N/A
Block 1 Walks	+	1.8 fc	6.0 fc	0.0 fc	N/A	N/A
Block 1 Walks	+	1.8 fc	6.0 fc	0.0 fc	N/A	N/A

NOTES

1. Calculations shown are Maintained Horizontal Footcandles at 0 ft AFG.  
2. Calculations are based on a Total Light Loss Factor of 0.78 for Type A and 0.70 for Type B.

REV.	COMMENT	DATE

**BELLISIMO**  
PROFESSIONAL LANDSCAPE ARCHITECTS

**BUCKING HORSE**

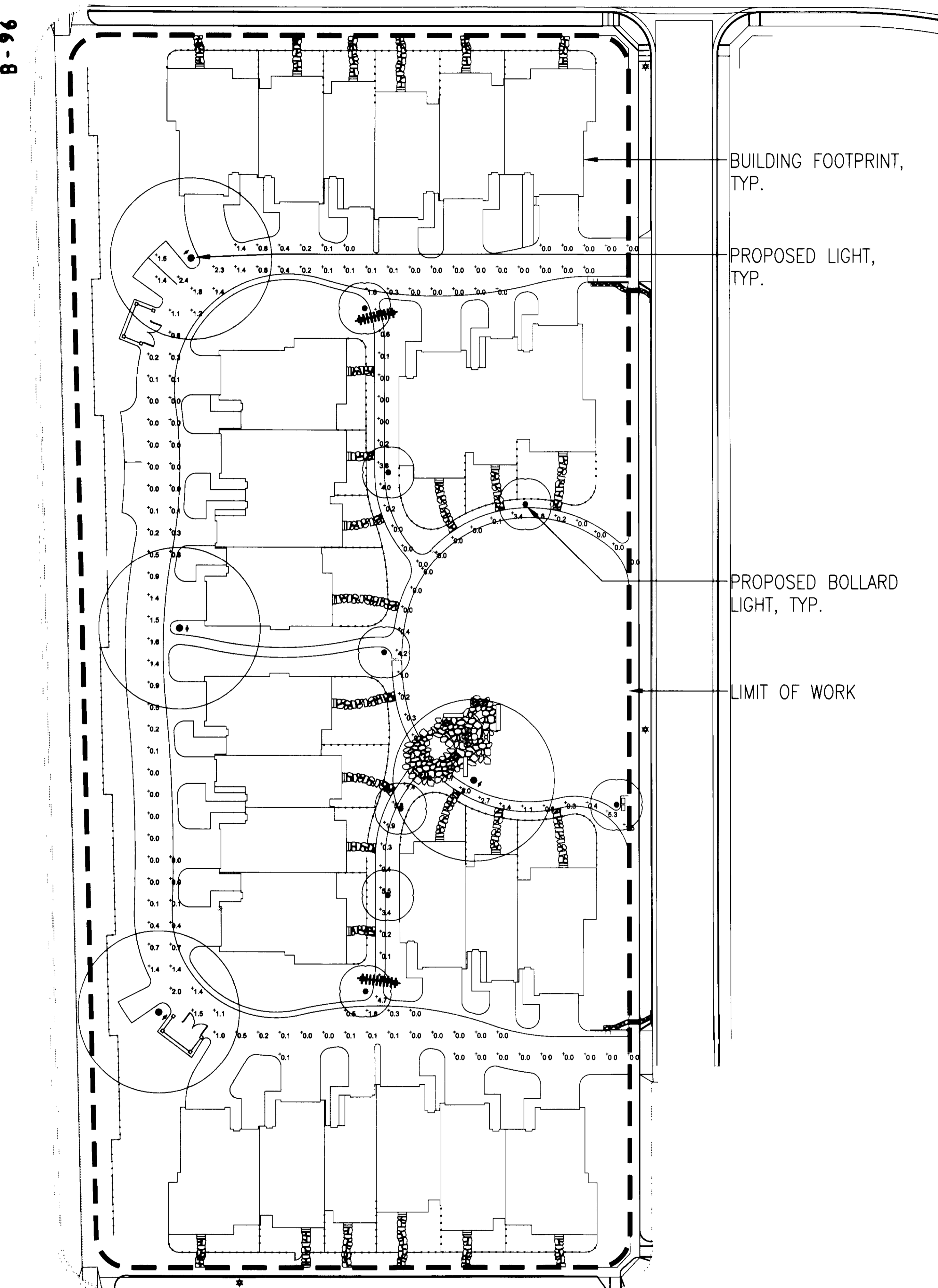
BELLISIMO, INC. Suite 201  
3702 Manhattan Ave., Fort Collins, CO 80526  
970-229-5900

**RUSSELL+MILLS studios**  
141 s. college ave, suite 104  
fort collins, co 80524  
p. 970-484-8850  
www.russellmillsstudios.com

BUCKING HORSE FILING ONE  
BUCKING HORSE TOWNHOMES  
LIGHTING PLAN - BLOCK 2  
FINAL DEVELOPMENT PLAN

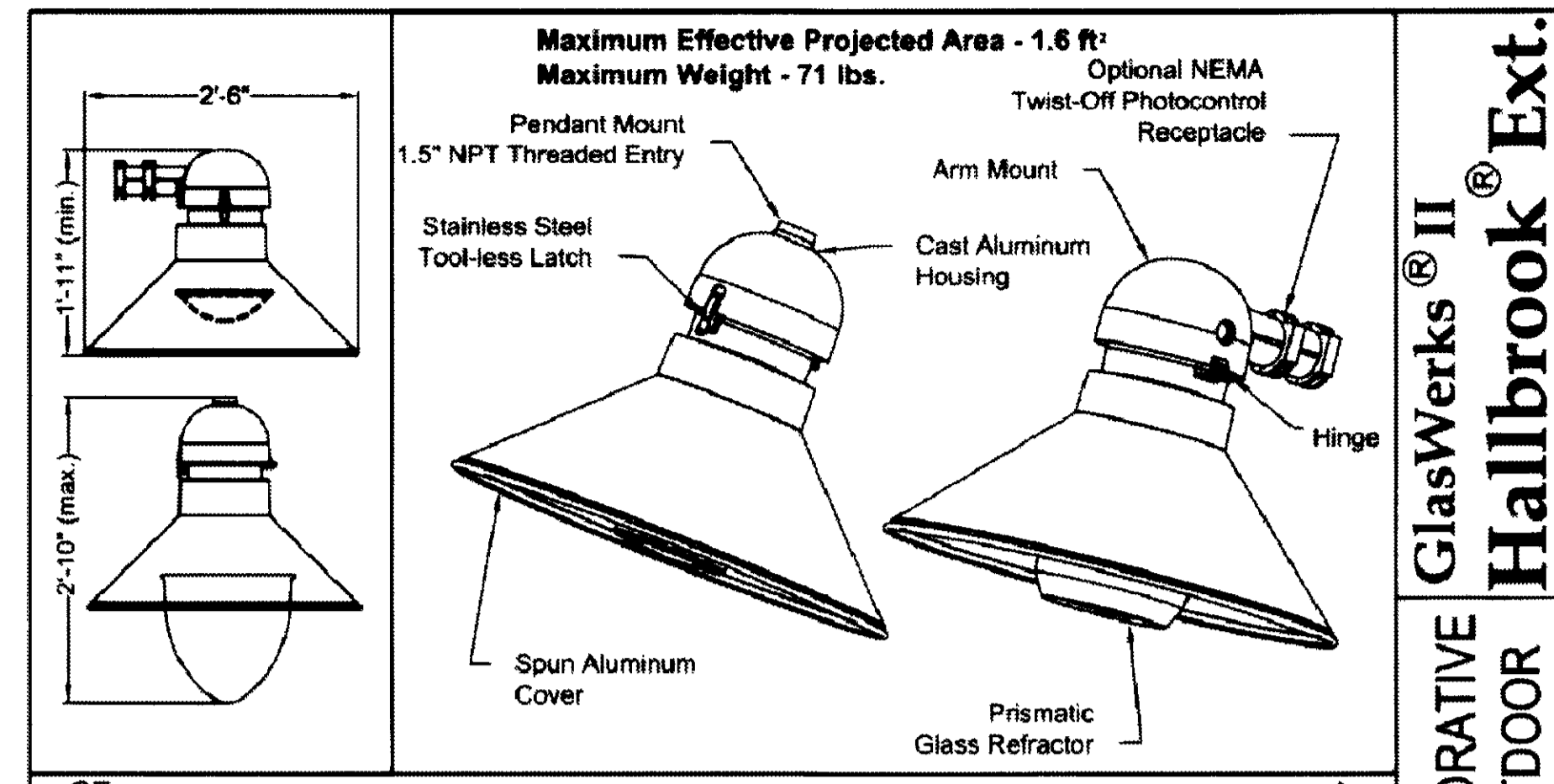
Date: 9/19/2012  
Drawn By: KT/SL  
Checked By: CR/PM

This unofficial copy was downloaded on Jul-18-2019 from the City of Fort Collins Public Records Website: <http://citydocs.fgoc.com>  
For additional information or an official copy, please contact Engineering Office 281 North College Fort Collins, CO 80521 USA

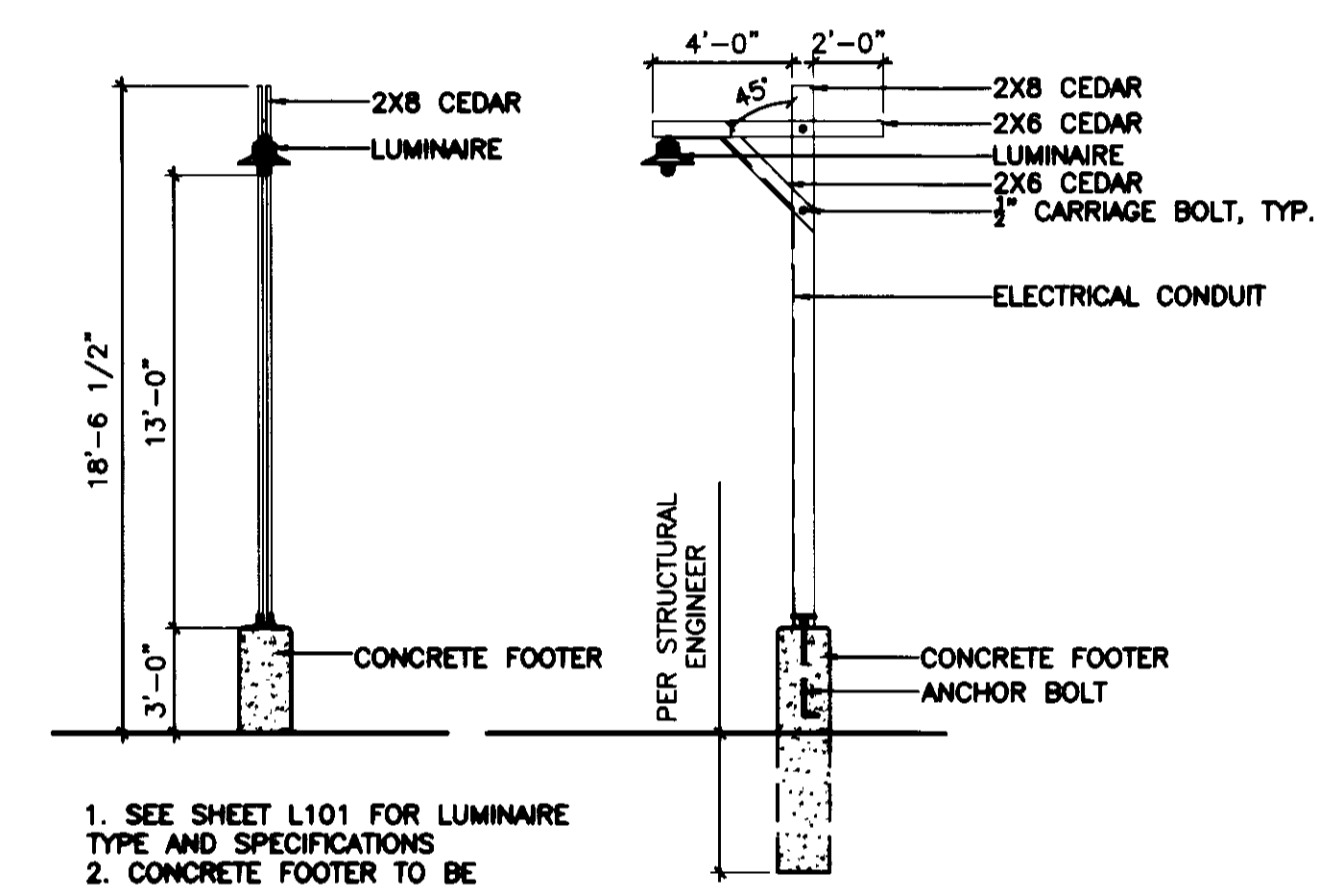


**A** LIGHTING PLAN  
SCALE: 1" = 30'-0"

LUMINAIRE SCHEDULE



- NOTES:  
1. SEE DETAIL B, THIS SHEET FOR LIGHT DIMENSIONS.  
2. GLASWERKS II HALLBROOK EXT. OR EQUAL  
3. H101 OR EQUAL



1. SEE SHEET L101 FOR LUMINAIRE TYPE AND SPECIFICATIONS  
2. CONCRETE FOOTER TO BE ENGINEERED BY LICENSED STRUCTURAL ENGINEER

**B** LIGHT - PARKING LOT  
SCALE: 1/4" = 1'-0"

Symbol	Label	Qty	Catalog Number	Description	File	Lumens	LLF	Watts
●	A	13	GE175PM000XS55 N	GLASWERKS II HALLBROOK EXTENDED, 175W CLEAR PMH MOUNTED AT 18 FT	GE175MH000XS55N.lvs	17500	0.78	198
□	B	26	H101/H102-100M-SYM	HOLOPHANE H101 LOUVER BOLLARD, SYMMETRIC DISTRIBUTION WITH COATED 100W MH ED-17	H101_H102-100M-SYM.lvs	7900	0.70	133.4

Description	Symbol	Avg	Max	Min	Max/Min	Avg/Min
Block 1 Parking Lower	+	1.5 fc	2.6 fc	1.0 fc	2.6:1	1.5:1
Block 1 Parking Upper	+	1.7 fc	2.1 fc	1.4 fc	1.5:1	1.2:1
Block 3 Walks	+	1.3 fc	5.8 fc	0.0 fc	N/A	N/A
Block 1 Walks	+	1.6 fc	6.0 fc	0.0 fc	N/A	N/A
Block 3 Roadway	+	0.4 fc	2.3 fc	0.0 fc	N/A	N/A
Block 2 Walks	+	1.9 fc	5.3 fc	0.0 fc	N/A	N/A
Block 3 Walk Middle	+	0.8 fc	4.8 fc	0.0 fc	N/A	N/A
Block 1 Parking Lower	+	1.5 fc	2.6 fc	1.0 fc	2.6:1	1.5:1
Block 3 Walks	+	1.3 fc	5.8 fc	0.0 fc	N/A	N/A
Block 1 Walks	+	1.6 fc	6.0 fc	0.0 fc	N/A	N/A
Block 1 Walks	+	1.6 fc	6.0 fc	0.0 fc	N/A	N/A

- NOTES  
1. Calculations shown are Maintained Horizontal Footcandles at 0 ft AFG.  
2. Calculations are based on a Total Light Loss Factor of 0.76 for Type A and 0.70 for Type B.

**DISPERSED INFORMATION**

SYMBOL	DESCRIPTION	SYMBOL	DESCRIPTION
H101	HOLOPHANE H101 LOUVER BOLLARD	SP	SPECIALTY LANDSCAPE
SP	SPECIALTY LANDSCAPE	DL	DOMED ROUND LOUVERED BOLLARD

**Specifications**  
MATERIAL: ...  
DISTRIBUTION: ...

REV.	COMMENT	DATE

**BELLISSIMO**  
ENVIRONMENTAL DESIGN, PLANNING & ARCHITECTURE

**BUCKING HORSE**

BELLISSIMO, INC.  
141 S. COLLEGE AVE., SUITE 201  
FORT COLLINS, CO 80524  
P: 970.484.8855  
WWW.BELLISSIMO.COM

**russell+mills studios**  
141 S. COLLEGE AVE., SUITE 104  
FORT COLLINS, CO 80524  
P: 970.484.8855  
WWW.RUSSELLMILLSTUDIOS.COM

**BUCKING HORSE FILING ONE**  
**BUCKING HORSE TOWNHOMES**  
**LIGHTING PLAN - BLOCK 3**  
FINAL DEVELOPMENT PLAN

Date: 9/19/2012  
Drawn By: KT/SL  
Checked By: CR/PM

This unofficial copy was downloaded on Jul-18-2019 from the City of Fort Collins Public Records Website: http://citydocs.fcgov.com/ For additional information or an official copy, please contact Engineering Office 281 North College Fort Collins, CO 80521 USA.