

KIM LIGHTING
CC/CCS 25" Arm Mounted Curvilinear Cutoff
 revision 5/04/05 • cc25a.pdf

Reset Form

Type: Job: Catalog number: / **KSF / 250W / MH** /

FINAL SELECTION TO BE MADE AT FINAL

Approvals: Date: Page: 1 of 6

Specifications
 25" Diameter
 150 to 400 Watt

CC
 CCS

25" DIA (635 mm)

6" (152 mm)

2" (51 mm)

Arm Cross-Section

Architectural Arm-Mounted Cutoff

Intended Use: For car lots, street lighting or parking areas.

Features: Housing - Rugged, heavy-gauge aluminum... Lens - 1/2" thick, impact-resistant tempered glass with abrasion-resistant, silver-reflective inner film.

Optical - Anodized segmented reflectors provide superior uniformity and control. KSF/MSF2 reflectors are rotatable and interchangeable. KSF2 Type 1 is only rotatable but not interchangeable. The cutoff distribution is available in 12 different beam spreads (see table).

Electrical - High resistance, high power factor for 100W and below. Custom-wired transformer for 175W and above. Copper secured and 100% factory tested. Removable power door and positive-locking disconnect plug.

Socket - Pre-wired, horizontally oriented, mogul-base socket (100W & 150W are made optional with copper alloy, screw-plate screw shell and center contact. UL listed 100W & 150W).

Listing - UL Listed (intended), CSA Certified (NIM Certified for optional UL listed for use in Canada).



Total Cutoff

The term "total cutoff" as applied to a DOWN fixture, means that no portion of the luminaire's optical system is spaced above horizontal in addition to the physical measurement that there must also meet the photometric requirements for classification as a total cutoff luminaire. The wall fixture meets this requirement. While some manufacturers claim to be total cutoff, their visible optical systems clearly do not meet the definition of the word "total cutoff". The wall fixture is designed to utilize a horizontal and vertical and a flat glass lens to achieve total cutoff. The distribution of light is controlled by a precision reflector system engineered to maximize the light spacing and minimize glare.

As a reflector system for the wall fixture, it is designed to achieve cutoff in the vertical plane with approximately 90% of the light being directed away from the wall. All light striking the wall comes only from the lens. This self-illumination may be aesthetically desirable, but it is not recommended by using the optional "backshield" design.

Exclusive integral down illumination is provided by the elimination of downward reflecting surfaces. The horizontal plane light is precisely directed away from the wall. All light striking the wall comes only from the lens. This self-illumination may be aesthetically desirable, but it is not recommended by using the optional "backshield" design.

Ordering Information: Example: C 2 50 120 ES



Specifications

25" Diameter
 150 to 400 Watt

CC
 CCS

25" DIA (635 mm)

6" (152 mm)

2" (51 mm)

Arm Cross-Section

Lighting Schedule

SYMBOL	MARK	DESCRIPTION	MANUF.	MODEL	REMARKS
[Symbol]	F1	WALL PACK FIXTURE	LITHONIA	KSF 250W MH TS	
[Symbol]	F2	PARKING LOT LIGHT	LITHONIA	KSF 250W J T4HS	
[Symbol]	F3	WALL PACK	KIM	WALL DIRECTOR 50W MH	WALL MOUNT
[Symbol]	F4	STRIP FLUORESCENT	STANDARD COLD WEATHER FIXTURE	4' ONE LAMP	WALL MOUNT
[Symbol]	F5	2 TUBE 8'-0" FLUORESCENT STRIP	METALUX	DVM246T8HG120ESB2	CHAIN MOUNT @ 10'-0" AFF
[Symbol]	F6	TWIN HEAD ADJUSTABLE FLOOD	HUBEL	8-9002	WALL MOUNTED
[Symbol]	F7	EMERGENCY BATTERY PACK IV / 2 HEADS	SURE-LITED	AA-7	WALL MOUNTED
[Symbol]	F8	FLUORESCENT 4-LAMP 2x4' TROFFER IV / ACQUA LENS AND ELECTRONIC BALLAST	METALUX	26492A120ESB1	CEILING RECESSED
[Symbol]	F9	2 TUBE 8'-0" FLUORESCENT STRIP	NOTE #1, 6	NOTE #1, 6	WALL MOUNTED, SEE ELEVATIONS FOR HEIGHTS
[Symbol]	F10	2 TUBE 8'-0" FLUORESCENT STRIP	NOTE #1, 6	NOTE #1, 6	WALL MOUNTED, SEE ELEVATIONS FOR HEIGHTS

Security Lights

General-Purpose Channels

Intended Use: For applications that require low to medium illumination levels. Suitable for general purpose applications.

Features: Steel channel (standard) with high-gloss, baked enamel finish. Optional aluminum channel available. Features corrosion-resistant fasteners for use in damp and harsh locations.

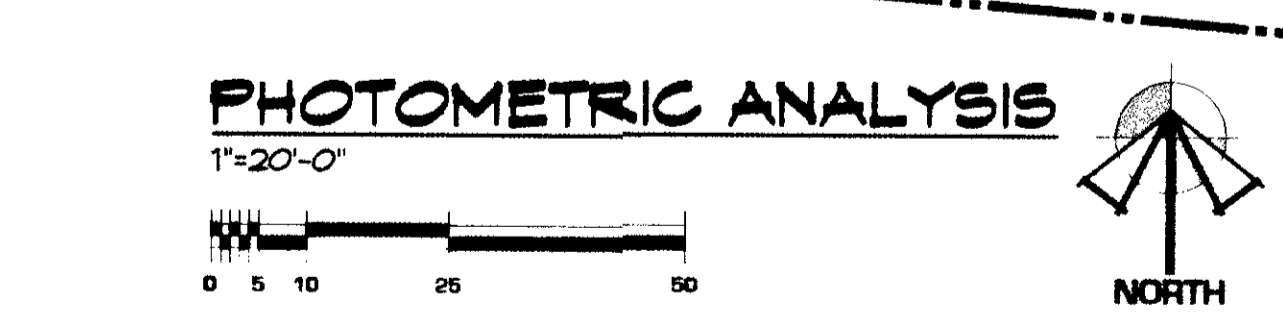
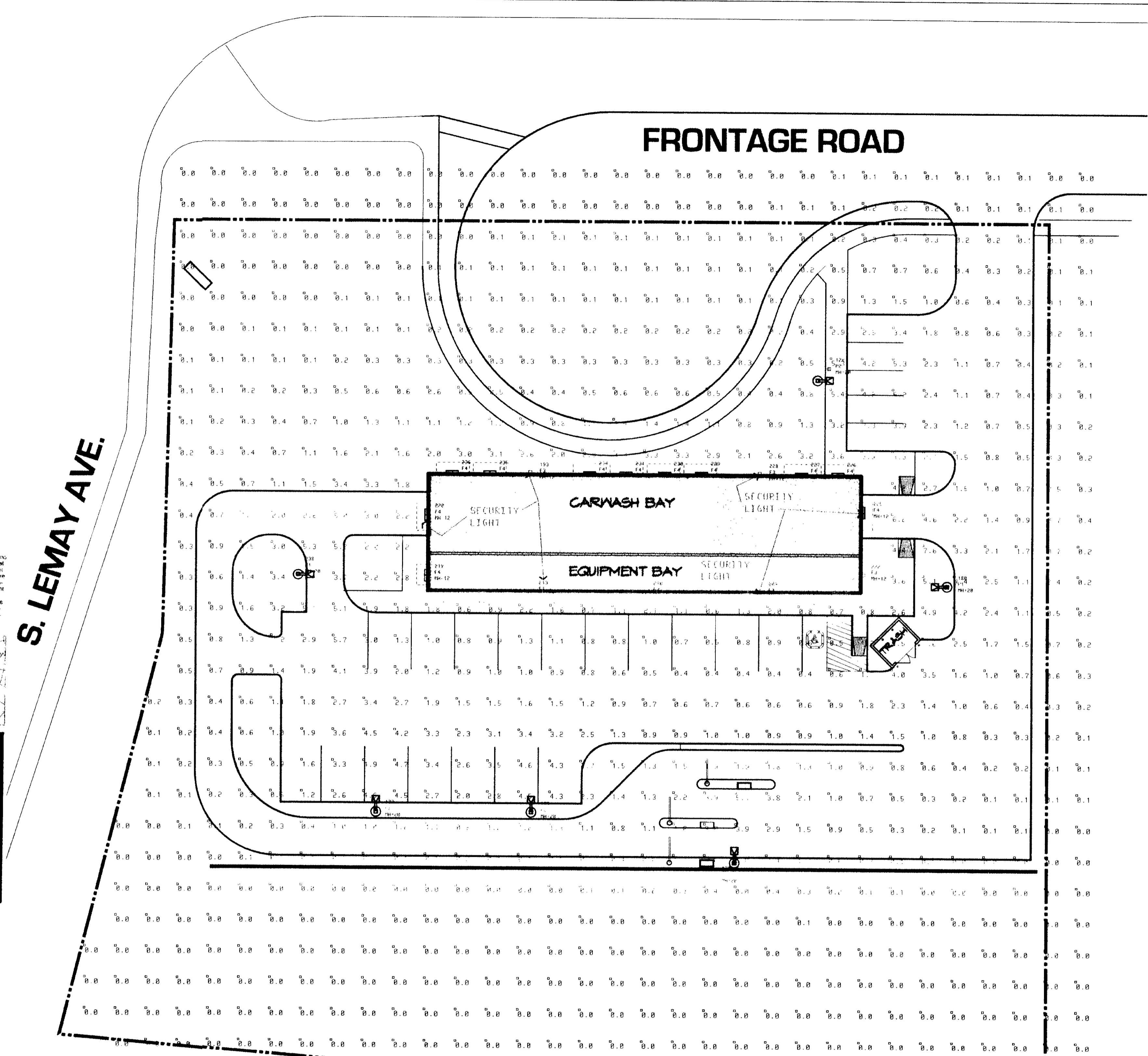
Ordering Information: Example: C 2 50 120 ES

FIXTURE

SECURITY LIGHTS SHALL REMAIN LIT AFTER CLOSING.....ALL OTHER LIGHTS SHALL BE OFF AFTER CLOSING TIME.

LIGHT FIXTURE SCHEDULE

SYMBOL	MARK	DESCRIPTION	MANUF.	MODEL	REMARKS
[Symbol]	F1	WALL PACK FIXTURE	LITHONIA	KSF 250W MH TS	
[Symbol]	F2	PARKING LOT LIGHT	LITHONIA	KSF 250W J T4HS	
[Symbol]	F3	WALL PACK	KIM	WALL DIRECTOR 50W MH	WALL MOUNT
[Symbol]	F4	STRIP FLUORESCENT	STANDARD COLD WEATHER FIXTURE	4' ONE LAMP	WALL MOUNT
[Symbol]	F5	2 TUBE 8'-0" FLUORESCENT STRIP	METALUX	DVM246T8HG120ESB2	CHAIN MOUNT @ 10'-0" AFF
[Symbol]	F6	TWIN HEAD ADJUSTABLE FLOOD	HUBEL	8-9002	WALL MOUNTED
[Symbol]	F7	EMERGENCY BATTERY PACK IV / 2 HEADS	SURE-LITED	AA-7	WALL MOUNTED
[Symbol]	F8	FLUORESCENT 4-LAMP 2x4' TROFFER IV / ACQUA LENS AND ELECTRONIC BALLAST	METALUX	26492A120ESB1	CEILING RECESSED
[Symbol]	F9	2 TUBE 8'-0" FLUORESCENT STRIP	NOTE #1, 6	NOTE #1, 6	WALL MOUNTED, SEE ELEVATIONS FOR HEIGHTS
[Symbol]	F10	2 TUBE 8'-0" FLUORESCENT STRIP	NOTE #1, 6	NOTE #1, 6	WALL MOUNTED, SEE ELEVATIONS FOR HEIGHTS



Numeric Summary

Label	CalcType	Units	Avg	Max	Min	Avg/Min	Max/Min
a1	Numinance	Fc	0.81	7.8	0.0	0.00	0.00

Luminaire Schedule

Symbol	Qty	Label	Arrangement	Lumens	LLF	Description
[Symbol]	4	F2	SINGLE	20000	1.000	LITHONIA KSF 250W MH T4HS
[Symbol]	6	F3	SINGLE	3450	1.000	KIM WALL DIRECTOR 50W MH
[Symbol]	2	F1	SINGLE	20000	1.000	LITHONIA KSF 250W MH TS
[Symbol]	11	F4	SINGLE	1450	1.000	4' 1 LAMP FLUOR STRIP UNDR AWNING (1)

① FLUORESCENT MOUNTED ON BUILDING BEHIND OPAQUE AWNING. THIS AWNING WILL SIGNIFICANTLY REDUCE THE ACTUAL LUMEN A OUTPUT OF SPECIFIED 1 LAMP CLOD START BALLAST FLUORESCENT

AGNEW CARWASH
 HIGHWAY 14 AND SOUTH LEMAY AVENUE

ARCHITECT OF RECORD

REVISION	DATE	COMMENTS
1	11.13.08	PLANNING SUBMITTAL #1
2	12.19.08	PLANNING SUBMITTAL #2
3	02.02.07	PLANNING SUBMITTAL #3
4	02.26.07	PLANNING SUBMITTAL #4
5	04.08.07	PLANNING SUBMITTAL #5

ARCODEV ARCHITECTS
 4100 WEST LITTLETON BLVD SUITE 200
 LITTLETON, CO 80120
 VOICE: 303.738.8991
 FAX: 303.738.9990

SHEET 7 OF 7

PHOTOMETRIC ANALYSIS