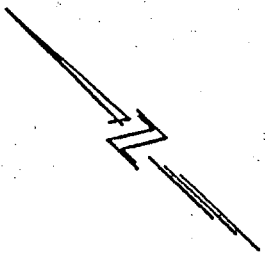
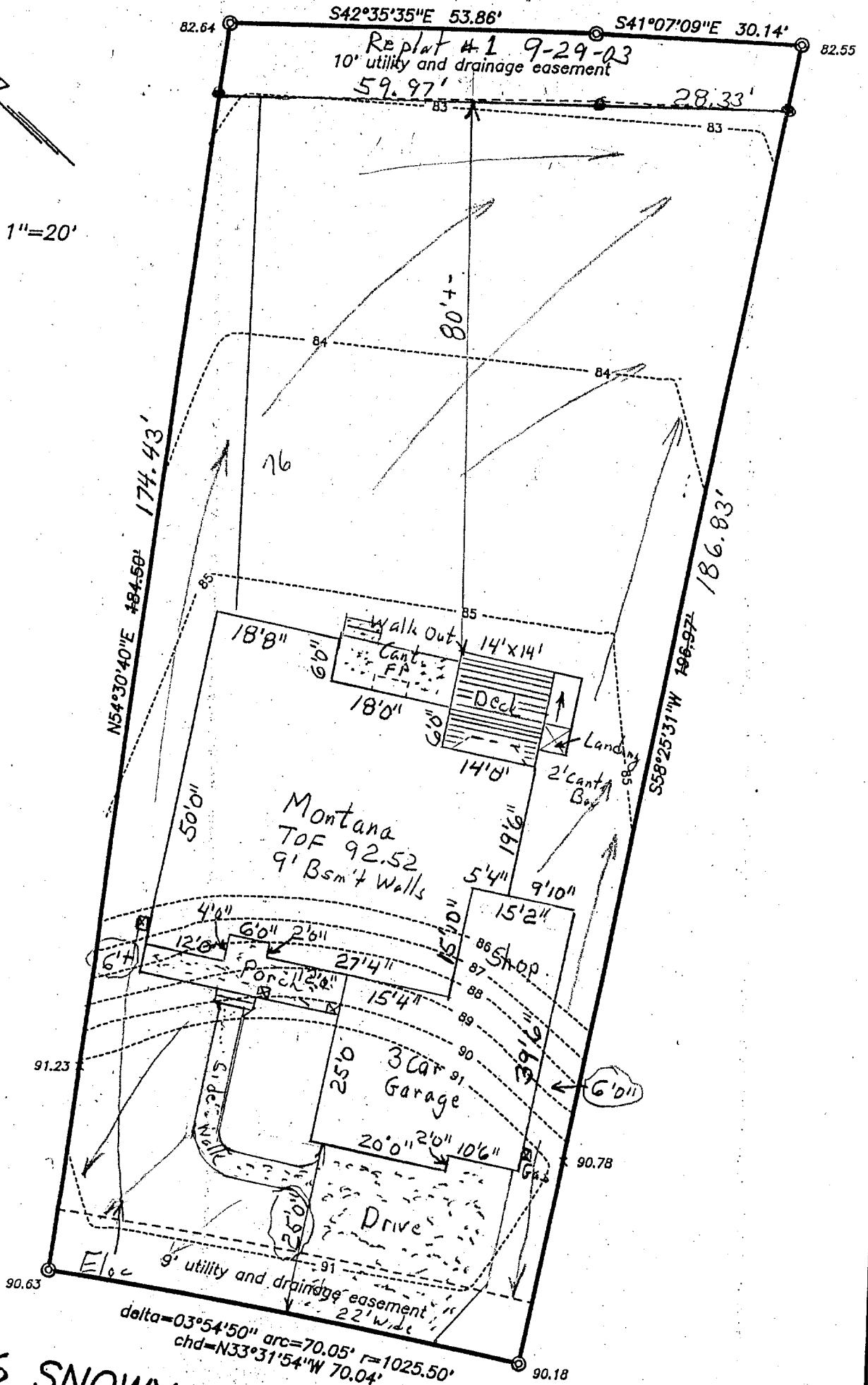


PLOT PLAN OF  
 LOT 20, SWIFT ADDITION TO FOSSIL LAKE P.U.D. Replat  
 LARIMER COUNTY, COLORADO



SCALE - 1"=20'



5956 SNOWY PLOVER COURT B0407466

226-2055  
 COLONY CONSTRUCTION, INC  
 Lot Area = 14,585 sf 13,778 SF Replat  
 Top of Foundation = 92.52 11-30-04

prepared by Stewart & Associates, Inc.