

LANDSCAPING PROPOSAL

okay A { Burning Bush (stays compact, does not outgrow space, has small leaves, good fall color) 4' on center - do not plant Lilac (suckers from bottom, gets scale) like on original

no! * Eliminate English Oak - can change to ASH, etc

okay B. { Replace with 5 Variegated Dogwoods 1 Columnar Buckthorn Tytar Fabric and Cedar fiber mulch in bed

- Tree option:

yes -1. Plant two as originally proposed

no -2. Move and center one...see*

no -the Kelly dogwood 1 Buckthorn (or 2 Euonymus) C. { Bed is enlarged to 6 feet from center of window to be able to aesthetically and mechanically carry eyeline around corner of house. Bed is filled with Tytar fabric and cedar fiber mulch.

Dotted line to extend around box in area near driveway from step to box. Gravel or 1 1/2" river rock used.

whatever Options on #1 tree.....Linden, Ash, English Oak

okay D. Replace oak tree with Ponderosa Pine Move tree back to about 20 feet from street.

okay E. Parking lot....eliminate triangle areas. Not large enough to do any good and will cause havoc with snow removal.

okay F. Replace Blue Spruce with fir tree. Does better in watered area.

okay G. Rock area...Plant fir tree. Eliminate day lilies

but center the tree

cannot eliminate tree H1 Plant tree every 50 feet per specs. Center about where H is but can move

H2 2 trees Marshall Seedless Ash one centered between light post and last parking place (north)

can only eliminate one other between light post and last parking place (south)

tree -we can cannot add another tree because of light pole put others can move trees to fit 50 foot requirement. H where ever along the fence

I. Eliminate all day lilies

okay Plant 32 snow mound spireas spaced and not under trees.

Variety does not need pruning.

Drip sprinkler system

Tybar and rock around perimeter

(wood chips

keep sprinkler

Handicapped area....Negate sprinkler line to area. For first year, have lawn mowing service water as they are mowing yard. Write into contract

J1 12 Gold Rock Potentillas

J2 4 Pryacantha

for security and due to hot and dry conditions of area

we may want to keep sprinkler because the plants will need the water throughout li.
okay

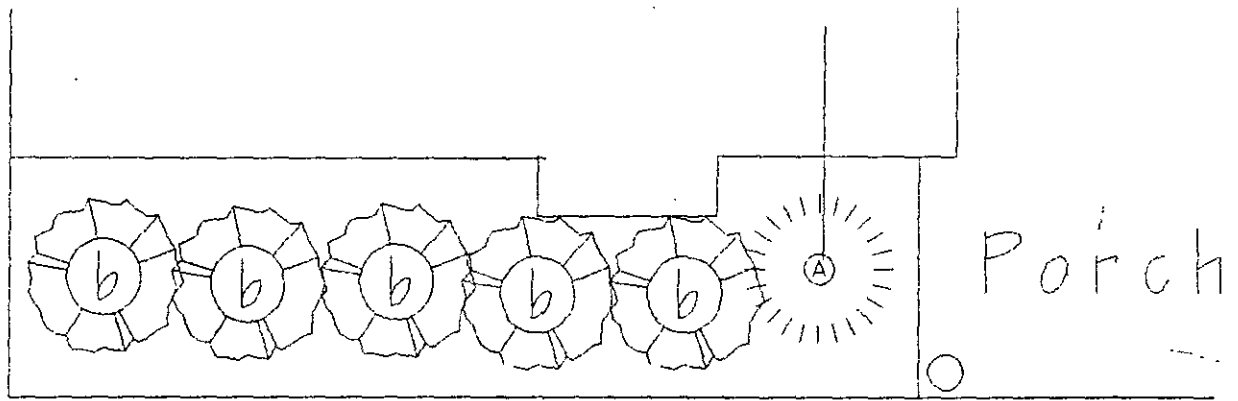
USE POLYMERS WHEN PLANTING EVERYTHING IN DRIP AREAS AND HANDICAPPED AREAS. PREFER USING IT EVERYWHERE.

15 yds organic
50 lb superphosphate } rototilled in 5-6"

B

Zeta Tau Alpha

Columnar
Buckthorn



Variegated
Dogwood

(5)

c

Zeta Tau Alpha

