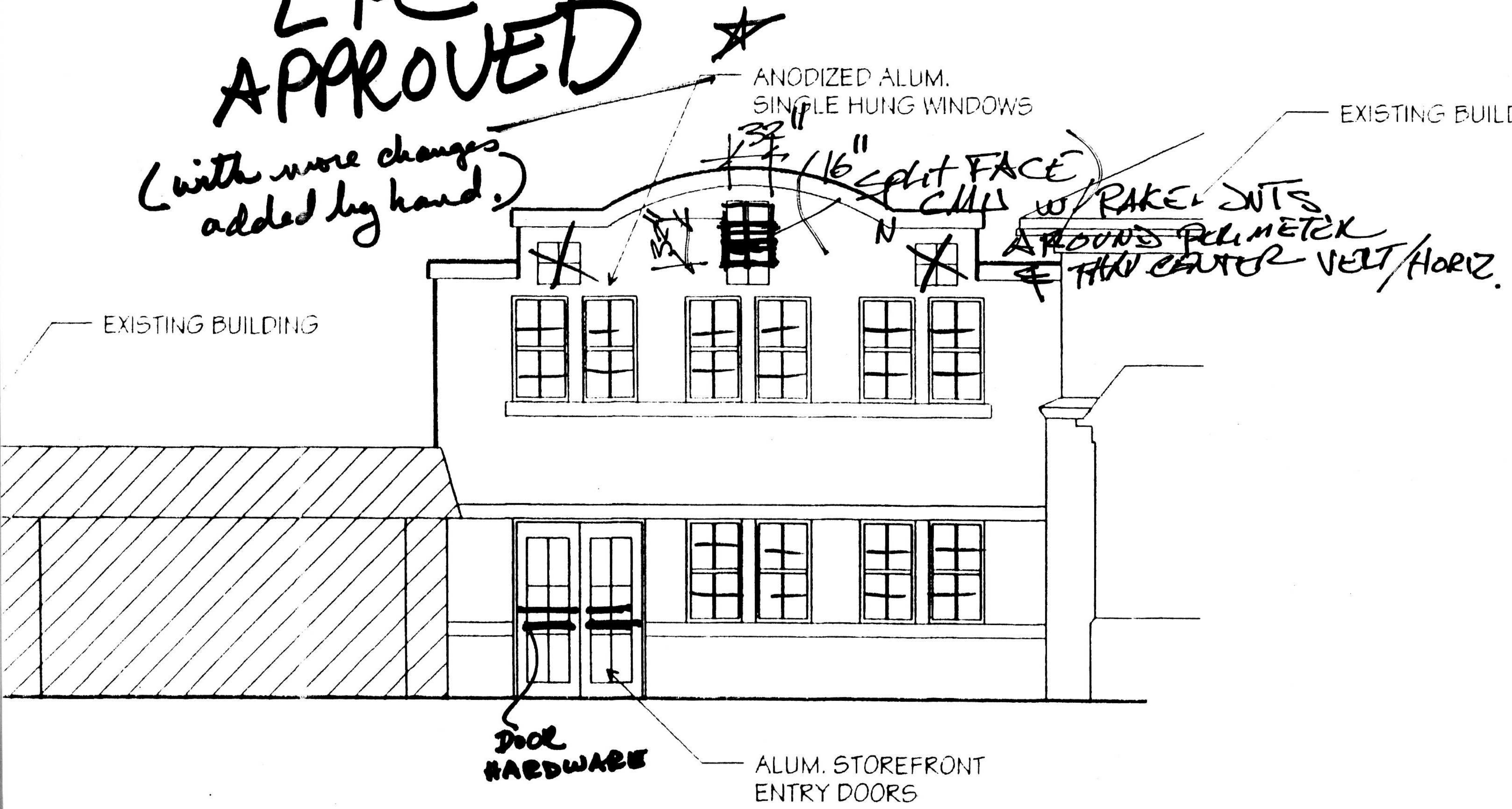


- order to make for handicapped accessibility.
2. The building addition's height is also necessary because of the internal requirement of mechanical/services not found in the front building, and to avoid having to install ramping on the second floor interiors.
 3. The historic building's roofline is a plain boxed cornice, of post World War II design.
 4. The roofline overlap will only impact the north one-third of the historic building. From the south, you will still see the historic roofline.
 5. The impact is on the rear of the historic building.

**LPR
APPROVED**

*(with more changes
added by hand.)*



SOUTH ELEVATION