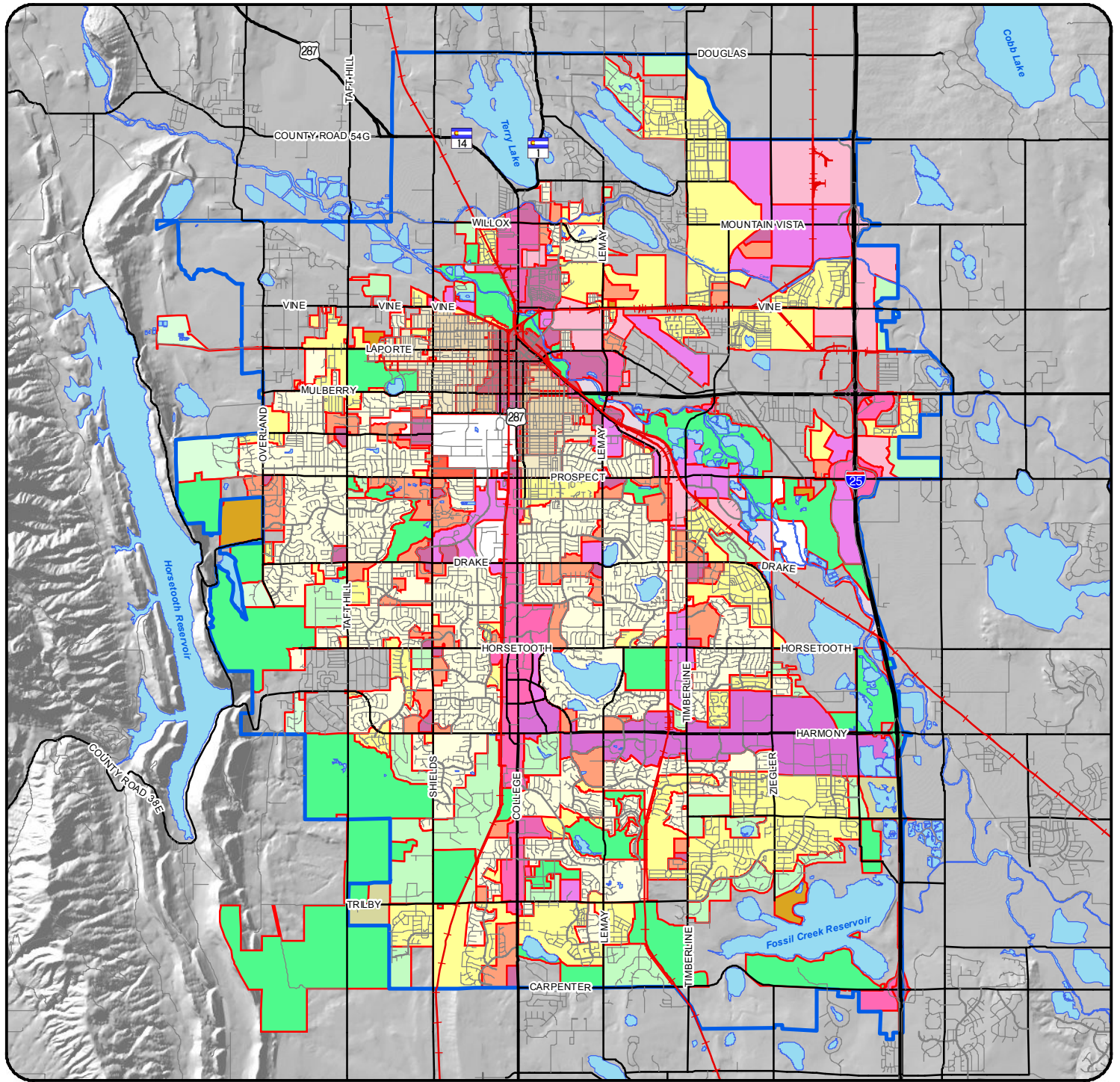
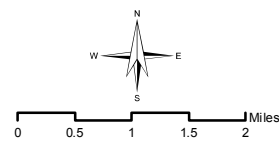


# City of Fort Collins Zoning



Railroad Lines	Limited Commercial	High Density Mixed-Use Neighborhood	River Conservation
Growth Management Area	Service Commercial	Low Density Mixed-Use Neighborhood	River Downtown Redevelopment
Water Features	Commercial North College	Medium Density Mixed-Use Neighborhood	Residential Foothills
<b>City Zoning</b>	CSU	Neighborhood Commercial	Low Density Residential
Community Commercial	Downtown	Neighborhood Conservation Buffer	Rural Lands District
Community Commercial North College	Employment	Neighborhood Conservation Low Density	Transition
Community Commercial Poudre River	Harmony Corridor	Neighborhood Conservation Medium Density	Urban Estate
General Commercial	Industrial	Public Open Lands	

These map products and all underlying data are developed for use by the City of Fort Collins for its internal purposes only, and were not designed or intended for general use by members of the public. The City makes no representation or warranty as to its accuracy, timeliness, or completeness, and in particular, its accuracy in labeling or displaying dimensions, contours, property boundaries, or placement of location of any map features thereon. THE CITY OF FORT COLLINS MAKES NO WARRANTY OF MERCHANTABILITY OR WARRANTY FOR FITNESS FOR PARTICULAR PURPOSE, EXPRESSED OR IMPLIED, WITH RESPECT TO THESE MAP PRODUCTS OR THE UNDERLYING DATA. Any users of these map products, map applications, or data, accepts same AS IS, WITH ALL FAULTS, and assumes all responsibility of the use thereof, and further covenants and agrees to hold the City harmless from and against all damage, loss, or liability arising from any use of this map product, in consideration of the City's having made this information available. Independent verification of all data contained herein should be obtained by any users of these products, or underlying data. The City disclaims, and shall not be held liable for any and all damage, loss, or liability, whether direct, indirect, or consequential, which arises or may arise from these map products or the use thereof by any person or entity.



Printed: April 01, 2019