

**SCREEN WALL DETAIL**  
NOT TO SCALE

**PLANT LIST**

**DECIDUOUS TREES**

| QUANT | KEY | COMMON NAME                        | BOTANIC NAME                                 | MIN SIZE | ROOT | REMARKS |
|-------|-----|------------------------------------|--|----------|------|---------|
| 7     | HT  | Honeylocust, Imperial              | Gleditsia triacanthos Invarata 'Imperial'    | 6' cal   | SB   |         |
| 4     | HT  | Honeylocust, Shademaster (1 Trump) | Gleditsia triacanthos Invarata 'Shademaster' | 6' cal   | SB   |         |
| 24    | DB  | Amel. Hackberry                    | Celtis occidentalis                          | 1.5' cal | SB   |         |
| 18    | DB  | Oak, Bur                           | Quercus macrocarpa                           | 1.5' cal | SB   |         |
| 12    | WT  | Amer. Cucumber                     | Prunus pennsylvanica                         | 1.5' cal | SB   |         |
| 12    | WT  | Mocker Tree                        | Asclepias tuberosa                           | 1.5' cal | SB   |         |
| 42    | WT  | Redbud, Norch                      | Asclepias speciosa                           | 1.5' cal | SB   |         |

**EVERGREEN TREES**

|    |    |                            |                 |        |    |                      |
|----|----|----------------------------|-----------------|--------|----|----------------------|
| 2  | HT | Pine, Pyramid (Transplant) | Pinus strobus   | 5' ht. | SB | established in cont. |
| 24 | HT | Pine, ponderosa            | Pinus ponderosa | 8' ht. | SB | established in cont. |

**EVERGREEN SHRUBS**

|    |    |                           |  |         |    |                      |
|----|----|---------------------------|--|---------|----|----------------------|
| 14 | CC | Juniper, Blue Chip        | Juniperus horizontalis 'Blue Chip'       | 18" cal | PC | established in cont. |
| 30 | CC | Juniper, Compact, Pfitzer | Juniperus chinensis Pfitzeriana compacta | 18" cal | PC | established in cont. |

**DECIDUOUS SHRUBS**

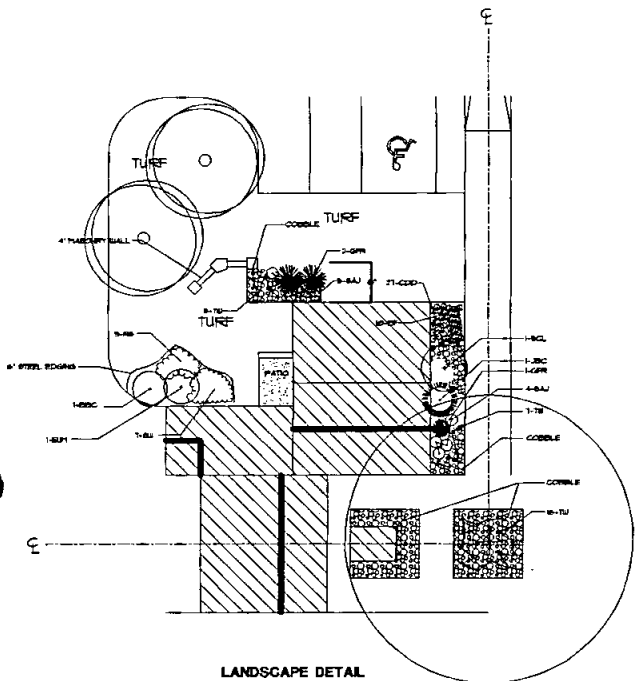
|    |    |                        |                              |         |    |                      |
|----|----|------------------------|------------------------------|---------|----|----------------------|
| 14 | CC | Burn, Cutleaf Staghorn | Rhus typhina lacinate        | 18" cal | PC | established in cont. |
| 2  | CC | Cammyrtle, Mophead     | Camponotus bicolor 'Mophead' | 12" ht. | PC | established in cont. |
| 20 | CC | Burning Bush, Compact  | Euonymus alatus compacta     | 12" ht. | PC | established in cont. |

**PERENNIALS**

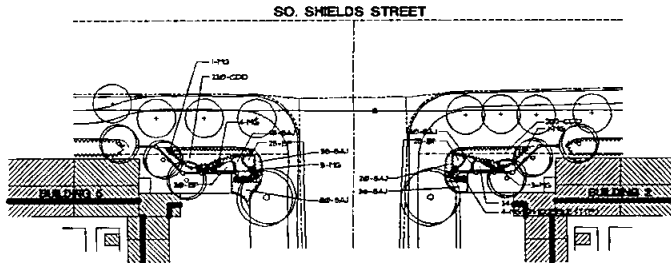
|     |    |                         |                                |  |  |  |
|-----|----|-------------------------|--------------------------------|--|--|--|
| 470 | HT | Blue Flax               | Linum catharticum              |  |  |  |
| 710 | CC | Blowgrass, Autumn Joy   | Sedum spectabile 'Autumn Joy'  |  |  |  |
| 300 | CC | Red, Summer             | Sedum spectabile 'Red Summer'  |  |  |  |
| 300 | CC | Red, Winter             | Sedum spectabile 'Red Winter'  |  |  |  |
| 300 | CC | Coronilla, Dwarf Double | Coronilla grandiflora 'Sunray' |  |  |  |
| 300 | CC | Hosta, Trane            | Hosta                          |  |  |  |

**GRASSES**

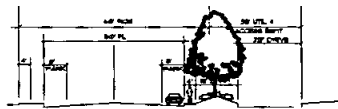
|    |    |                               |                                     |  |  |  |
|----|----|-------------------------------|-------------------------------------|--|--|--|
| 50 | CC | Blue, Maiden                  | Miscanthus sinensis 'Blue Maiden'   |  |  |  |
| 10 | CC | Father Reed Grass, Foerster's | Calamagrostis multiflora 'Foster's' |  |  |  |



**LANDSCAPE DETAIL**  
REPRESENTATIVE UNIT  
1" = 1'



**LANDSCAPE DETAIL**  
SECTION A-A  
1" = 1'



**SECTION A-A**  
1" = 1'

**WINDTRAIL PARK P.U.D.**  
**DETAILS**



Approved: \_\_\_\_\_  
 Checked: \_\_\_\_\_  
 Date: \_\_\_\_\_  
 Author: \_\_\_\_\_  
 Title: \_\_\_\_\_  
 Scale: \_\_\_\_\_  
 Sheet: 2 of 2