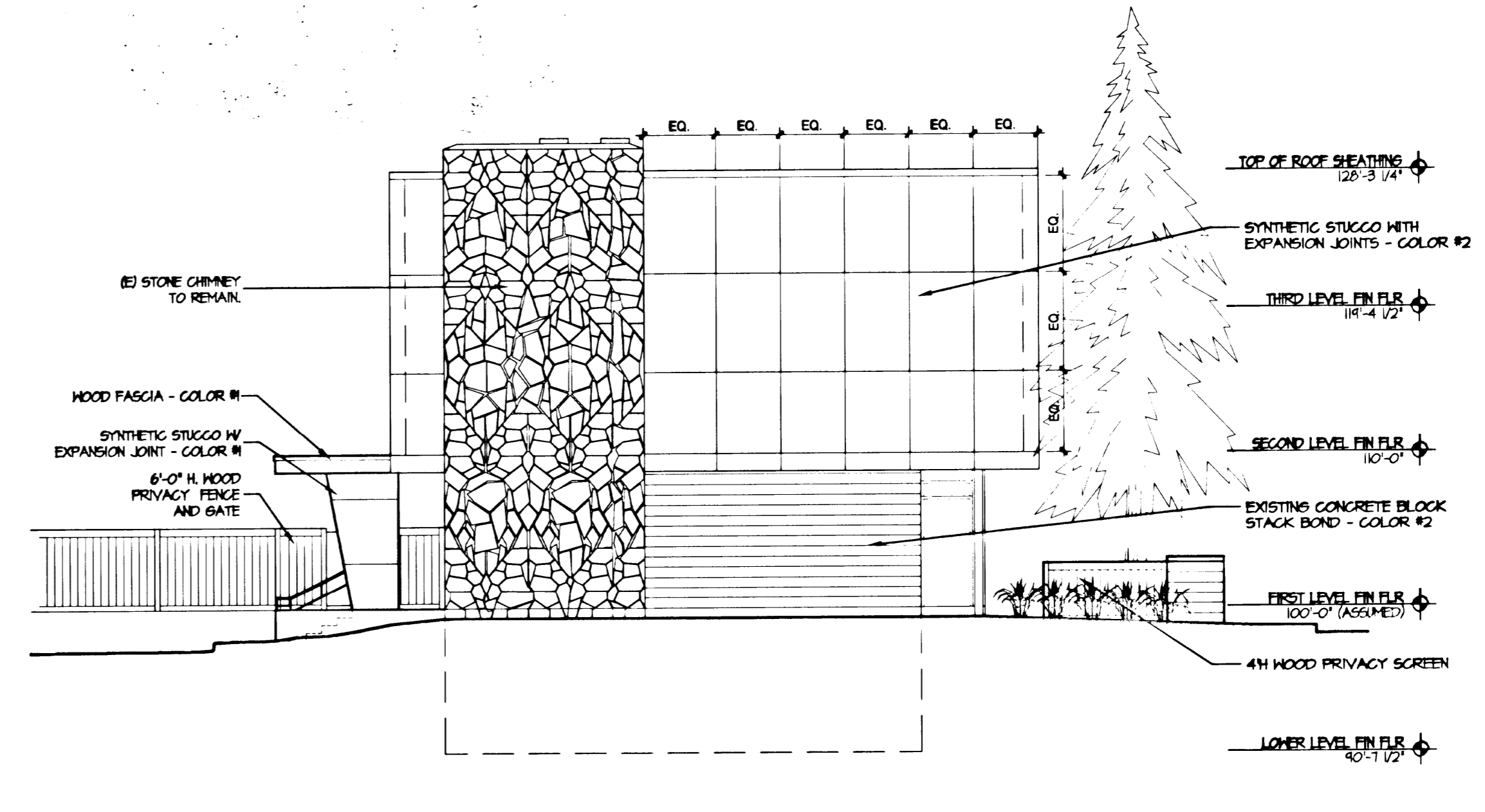


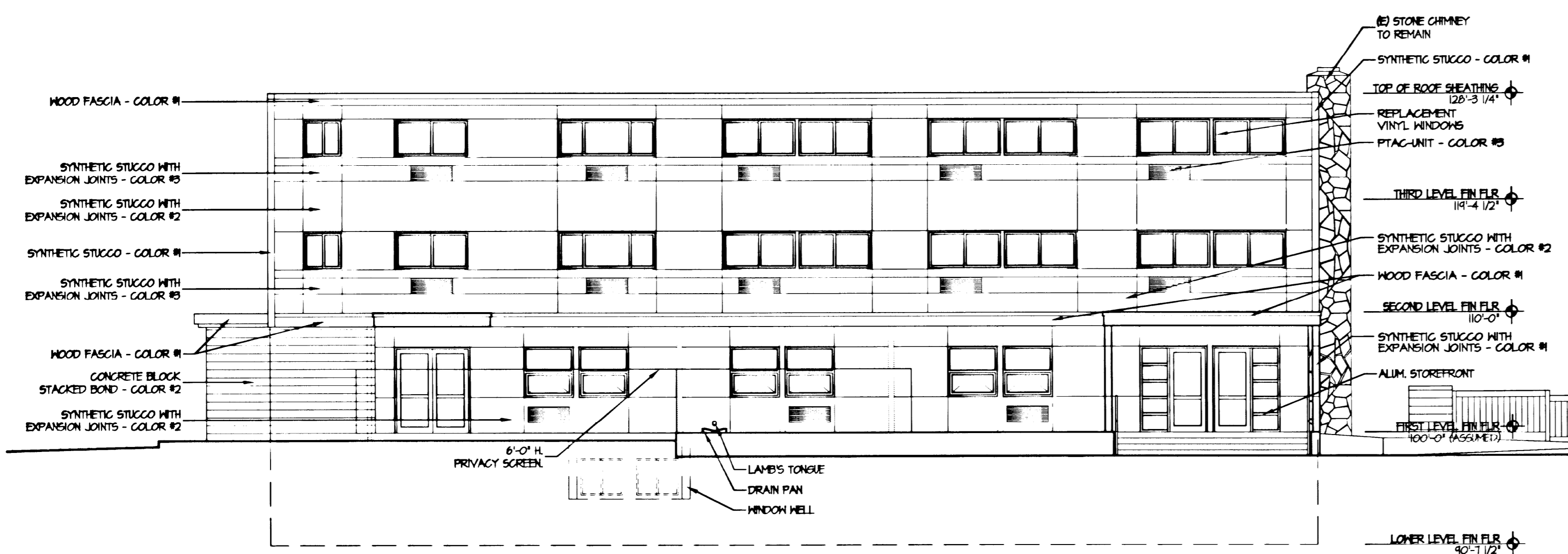
M1 NORTH ELEVATION

1/8" = 1'-0"



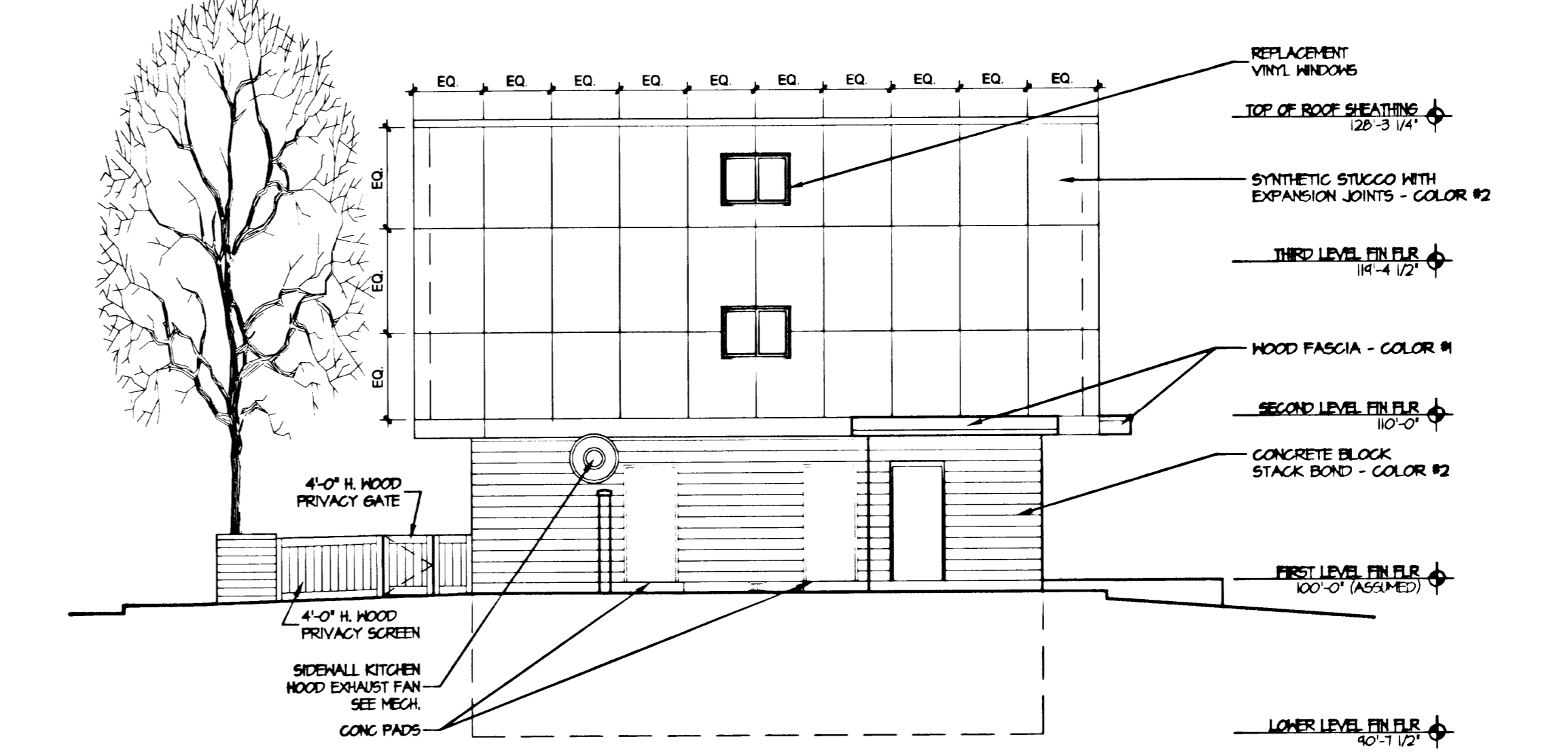
M15 EAST ELEVATION

1/8" = 1'-0"



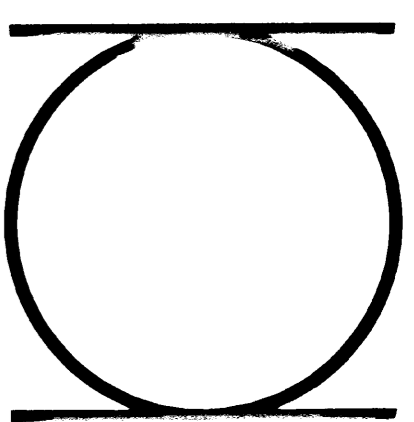
A1 SOUTH ELEVATION

1/8" = 1'-0"



A15 WEST ELEVATION

1/8" = 1'-0"



ADDITIONS AND REMODEL
TURNING POINT
 801 SOUTH SHIELDS
 FORT COLLINS, COLORADO

RB+B ARCHITECTS, INC.
 315 EAST MOUNTAIN AVENUE
 SUITE 100
 FORT COLLINS, CO 80524
 PHONE: (970) 484-0117
 FAX: (970) 484-0264
 E-MAIL: rbbinc@rbbarchitects.com



RB+B JOB NUMBER:
 99-23

DRAWN:
 RES/SLM

CHECKED:
 KF

ISSUE DATE:

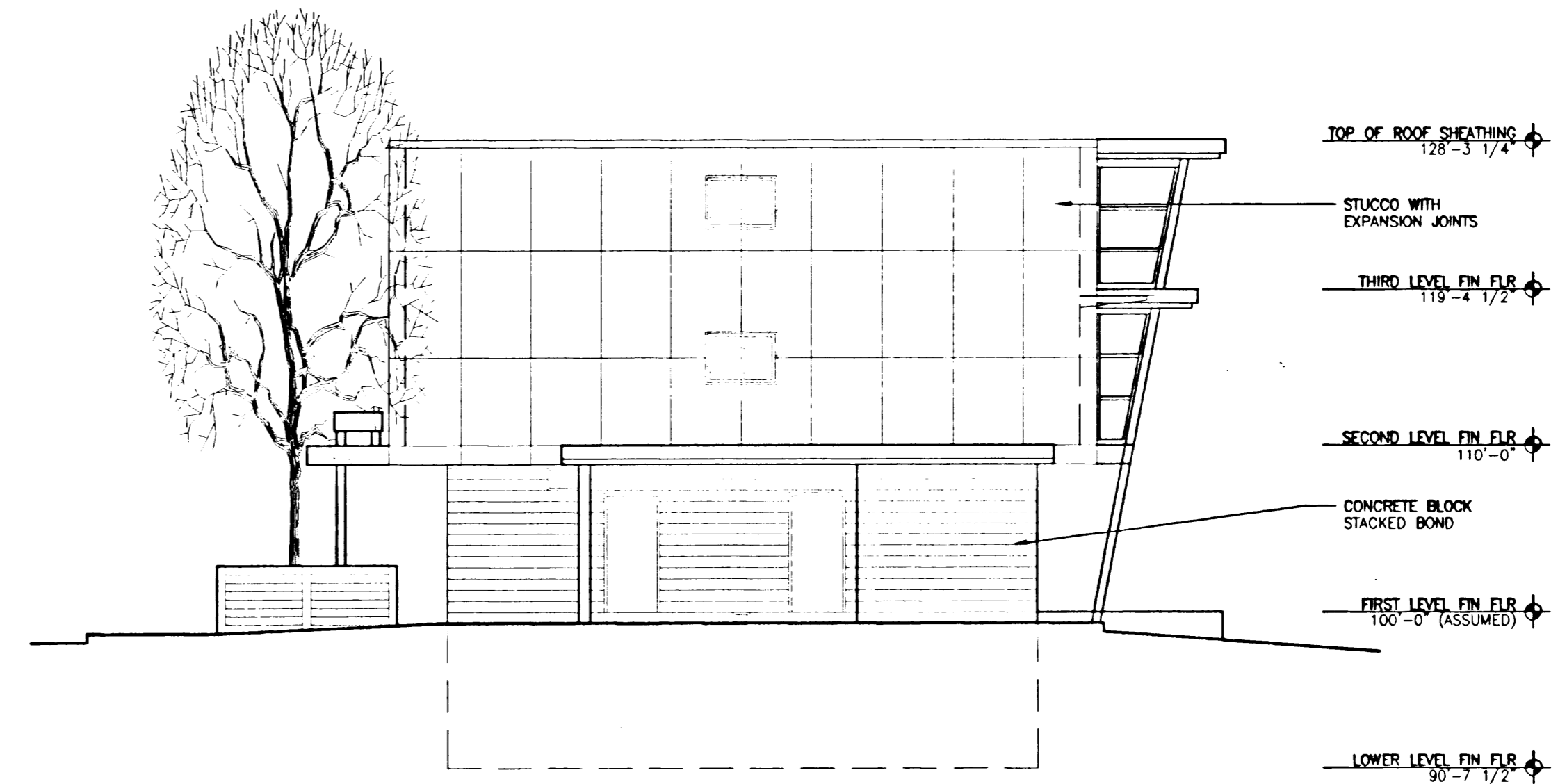
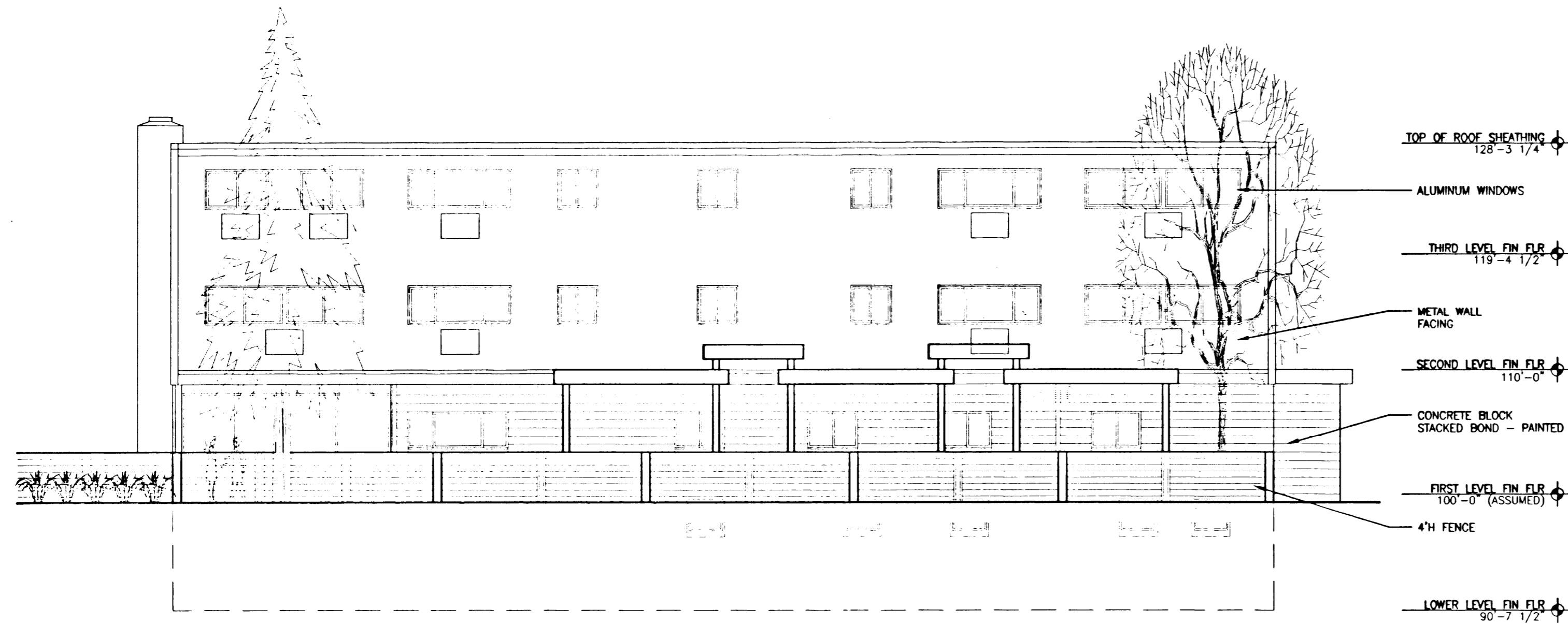
REVISIONS:

SHEET NAME:
 EXTERIOR ELEVATIONS

SHEET NUMBER:

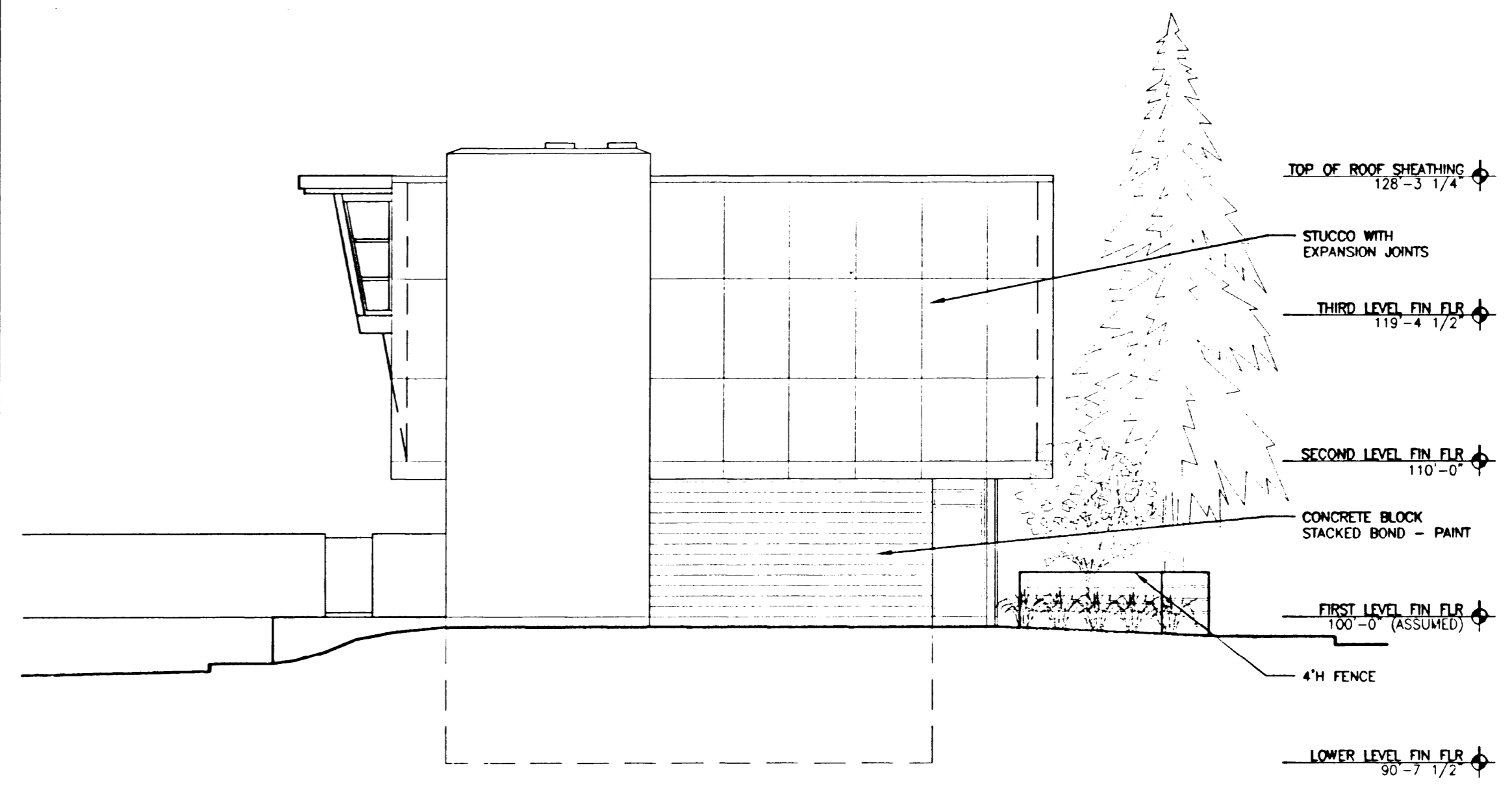
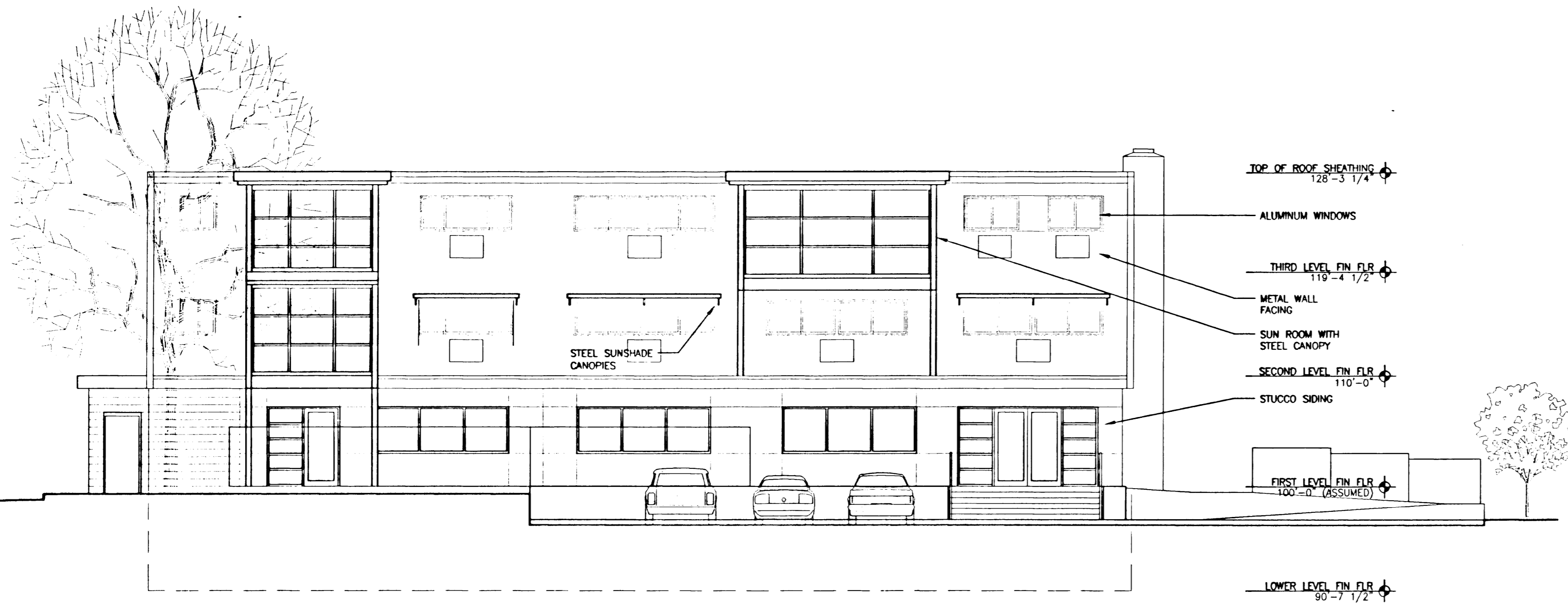
4.1

Z:\RBB\turning point\Drawings\A-101\REV.dwg Mon Jul 10 15:40:05 2000 RB+B Architects, Inc.



01 NORTH ELEVATION
1/8" = 1'-0" PROPOSED

01 EAST ELEVATION
1/8" = 1'-0" PROPOSED



01 SOUTH ELEVATION
1/8" = 1'-0" PROPOSED

01 WEST ELEVATION
1/8" = 1'-0" PROPOSED

MINOR AMENDMENT
TURNING POINT
801 SOUTH SHIELDS
FORT COLLINS, COLORADO

RB+B ARCHITECTS, INC.
315 EAST MOUNTAIN AVENUE
SUITE 100
FORT COLLINS, CO 80524
PHONE: (970) 484-0117
FAX: (970) 484-0264
E-MAIL: rbbinc@cris.com



RB+B JOB NUMBER:
99-08

DRAWN:
RES

CHECKED:
KF

ISSUE DATE:
5-28-99

REVISIONS:
10-1-99

SHEET NAME:
PROPOSED ELEVATIONS

SHEET NUMBER:

4.2