

CITY OF FORT COLLINS

ADDENDUM No. 1  
BID #5767  
LEMAY AVENUE WIDENING PROJECT

**SPECIFICATIONS AND CONTRACT DOCUMENTS**

Description of Bid #5767 Lemay Avenue Widening Project

OPENING DATE: March 11, 2003, 3:00p.m. (Our Clock)

To all prospective bidders under the specifications and contract documents described above, the following changes are hereby made.

- I. There is a discrepancy regarding the elevations of the footings for the concrete headwalls for the pedestrian underpass. On sheet BC4, on the Bridgeway / Headwall Elevation detail, the Top of Footing elevations should read:

**EL. = 4907.65 (West)**

**EL. = 4909.65 (East)**

- II. There has been a change regarding the drain in the underpass. The plans show the drain being 0.50 feet deep and the change is to make it only **2.55" deep**. There is an attachment labeled "**Attachment #1**" that shows the specifications for this drain.
- III. There was an error on our bid schedule: there is a typo that needs to be corrected

Line item 630-01 Type III Barricades (7 Boards for 20 Days)

- This item is to be placed permanently on the undeveloped property along Lemay Avenue at the driveway entrance. This is the driveway on the west side just north of the Stone Creek Channel. Therefore, the line item should read:

**630-01 Type III Barricades**

Line item 630-02 Message Boards

This item should have read:

**630-02 Message Boards (7 Boards for 20 Days)**

- It will be necessary to place 7 message boards along the parameter of the project site to notify the public when there are changes regarding closures

and openings. We will require that all 7 boards be placed at least one week prior to the road closure at the beginning of the project for 10 days and for 10 days at the end of the project. There will be at least 3 weeks notification prior to the signs being placed.

- IV. In our Technical Specifications on page 36, we have stated that the structural concrete for the entire pedestrian underpass needs to be class B with strength of 4000 psi. This is true for the wingwalls, parapet walls, retaining walls and toe walls. However, the box itself must be class D concrete with strength of 4500 psi, which is stated on page BC2 of the plans.
- V. On the plans in the Removal Sections, there is a note in the areas to be milled that states that the millings will be hauled to a site designated by the Engineer. In the technical specifications, we state that the millings are the property of the Contractor. There was a project that we were needing extra fill when the plans were being designed, however, this project's scope has been changed after the plans were completed.

**To clarify... The millings will be the property of the Contractor.**

- VI. On page 15 of the plans, there is a storm manhole at station 0+00. There is a note on the plans at this location that is in bold that requires a Tide flex valve. **This manhole is existing and will not be a part of the project scope.**
- VII. **All striping and signing will be done by the City of Fort Collins Streets Department.**
- VIII. There was a request for more information on the footings for the concrete wingwalls on the underpass.

**The footings will be level, with vertical steps, as the grade rises. The Contractor can choose the step heights and locations as he/she wishes, as long as 1' - 6" minimum cover is maintained. Whether they choose to have many small (6" +/-) steps, or few large steps (2'-0" +/-) it is up to the Contractor.**

- IX. Line item error on bid schedule and correction for technical specifications:

Item 608-06 Concrete Crossspan with Aprons (8")

In our Larimer County Urban Standards the thickness requirements have changed. This item should read:

**608-06 Concrete Crossspan with Aprons (9 ½")**

- X. The floor of the underpass box shows 1 foot of concrete below the colored sidewalk. To save money, there has been a change to make this 1 foot section a flowfill mix instead of concrete. The mixture shall consist of:

**A pumpable flowfill mix containing 2 sack concrete and 4 sack flyash. The assumed mix shall be approved based on the success of previous jobs by the City of Fort Collins.**

The cost of this mixture will be paid for under line item 601-01.

- XI. There was concern about the condition of the existing parapet walls on the Stone Creek Box Culvert. A new line item has been added to the bid schedule to rehab the parapet walls as necessary and directed by the City of Fort Collins. This new line item is:

**601-03 R & R Existing Parapet Walls @ Stone Creek Box Culvert      25 LF**

The parapet walls must meet the Larimer County Urban Standards.

- XII. The details on the plans show the truncated domes being constructed of brick pavers. The technical specifications call for a flexible matt stamping tool to create the truncated domes. We want the domes to be constructed with the stamp. There is an attachment labeled "**Attachment 2a & Attachment 2b**" that gives an example of what we want.

If you have any questions please contact John Stephen, CPPB, Senior Buyer, at 970-221-6777.

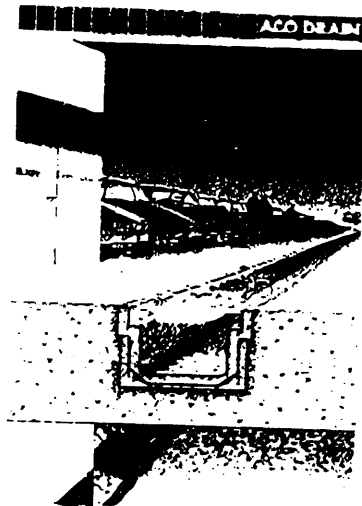
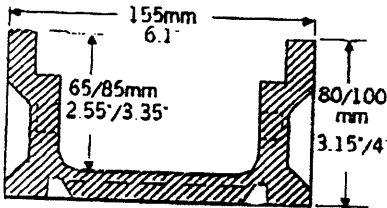
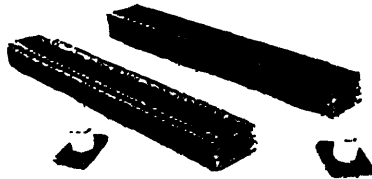
**YOU MUST USE THE ATTACHED ADDENDUM #1 BID SCHEDULE WHEN SUBMITTING YOUR BID.**

**RECEIPT OF THIS ADDENDUM MUST BE ACKNOWLEDGED BY A WRITTEN STATEMENT ENCLOSED WITH THE BID/QUOTE STATING THAT THIS ADDENDUM HAS BEEN RECEIVED.**

# ACO DRAIN® III

## H 100 Shallow channel System

*A light weight neutral depth system, suitable for applications where excavation invert depth is restricted. Available in two depths. Shallow channels can withstand loadings of up to class E (135,000 lbs). Shallow channels can be supplied with ductile iron frame and grating for heavy duty applications and are compatible with the full range of NW 100 gratings.*



### Loading

Up to load class E (135,000 lbs) with ductile iron frame and grating

### Components

**Channels:** two channel depths, 080 and 0100, one meter length, interlocking, supplied with or without ductile iron frame

**Caps:** closing end caps, inlet/outlet caps with 2" PVC pipe.

**Gratings:** all of the standard grates and covers available for use with the ACO NW 100 can be used with the Shallow system. An optional ductile iron frame and grating is available

**Locking Device:** supplied with standard galvanized steel bar and bolt, two per meter channel length

**Accessories:** channel chair, super mix gun, concrete anchors for use with frame, cleaning shovel, ACO Seal

### Dimensions

**Nominal width:** 100mm/4" for both channel depths.

**Height:** Channels w/frame, 4.35"/110mm (H 080) and 5.1"/130mm (H100)

wo/frame 3.15"/80mm and 4"/100mm

**Invert depth:** Channels w/frame 3.75"/95mm (H 080) and 4.5"/115mm (H 100) wo/frame, 2.55"/65mm and 3.34"/85mm.

### Specifications

The surface drainage system shall be ACO Shallow H 100 Channel system as manufactured by ACO Polymer products, Inc., Chardon, Ohio.

The system shall be 4" /100 mm nominal width and manufactured with constant internal depth.

The channels shall be constructed of polyester or vinyl ester concrete with ductile iron frame and grating, depending on loading requirements. The channel shall have preformed recesses in the inside walls. Locking Bars shall be installed in the wall recesses and the grating shall be locked securely in position by bolting to the bars using steel bolts. Two bolts and bars per meter channel length are required.

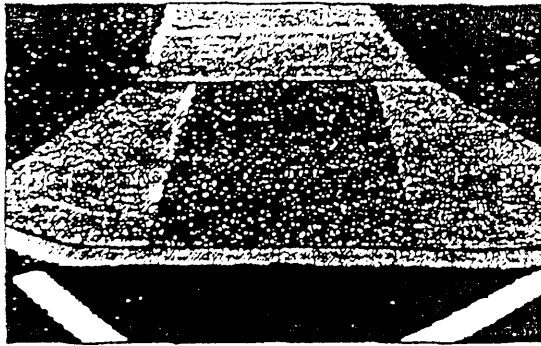
Material water absorption rate shall not exceed 0.1% by weight. Material shall be designed to withstand a compressive strength range between 11,000 - 15,000 psi, tensile stress of 2,800 psi, flexural strength of 2,900 psi, salt proof, frost proof and resilient to dilute acids and alkalis

The system shall be installed in accordance with the manufacturer's printed instructions and recommendations

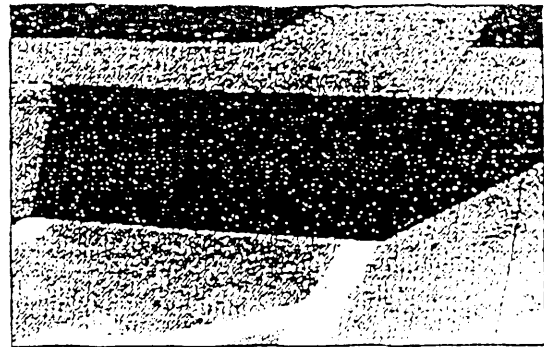
### Component list

Component	Part No	Dimensions	Invert depth	Weight
<b>Channels w/frame</b>	H 100	1 m/39.37"	115mm/4.5"	65 lbs
	H 080	1 m/39.37"	95mm/3.75"	56 lbs
<b>Channels wo/frame</b>	H 100	1 m/39.37"	85mm/3.35"	27 lbs
	H 080	1 m/39.37"	65mm/2.55"	18 lbs
<b>Caps</b>				
080 Female closing cap				1.5 lbs
080 Male closing cap				1.5 lbs
080 Inlet 2" PVC cap				1.5 lbs
080 Outlet 2" PVC cap				1.5 lbs
100 Closing end cap				1.5 lbs
100 Inlet 2" PVC				1.5 lbs
Outlet cap 2" PVC				1.5 lbs
<b>Gratings &amp; Locks</b>	See pages 16-17			

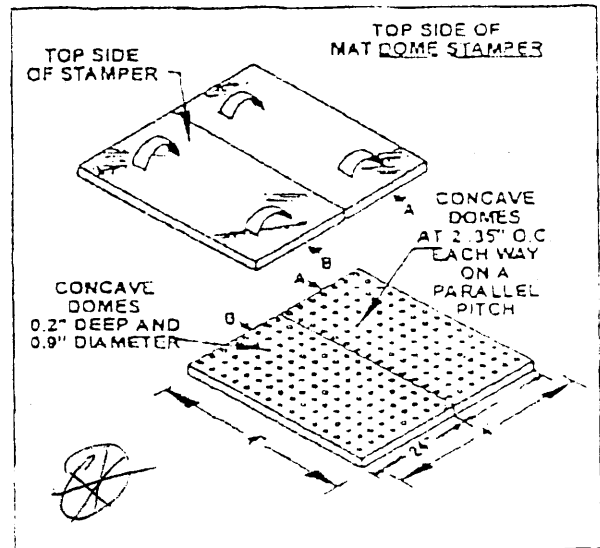
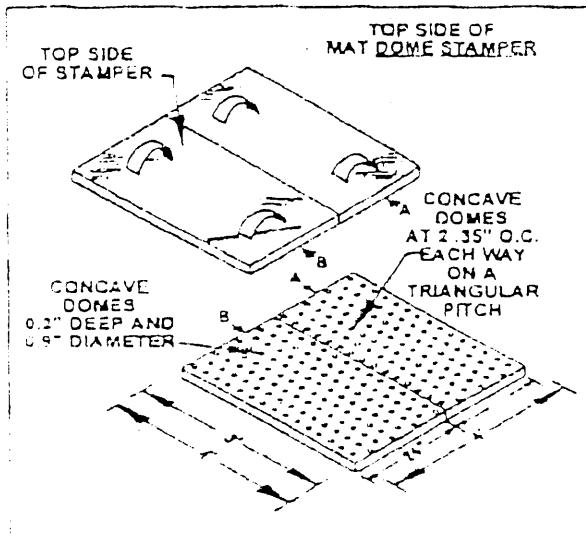
# Increte Systems Flexible Mat Stamping System



BLIND PATH ADA  
FLEXIBLE MAT STAMPING TOOL



WHEELCHAIR PATH ADA  
FLEXIBLE MAT STAMPING TOOL



The Future Of Concrete!

1611 Gunn Highway, Odessa, FL 33556

Tel: (813) 886-8811, (800) 752-4626, Fax: (813) 920-1516, [www.increte.com](http://www.increte.com)

INCRETE, a wholly owned subsidiary of INCO Chemical Supply Co., occupies an ultra-modern 50,000 + square foot facility in the heart of Tampa, Florida.

Boasting a worldwide network of contractors, dealers, and distributors, the INCO product line specializes in exterior decorative concrete product chemistry and design.

Recognized as a leading manufacturer in the decorative surfacing industry since 1963, INCO is continually active in its research and development programs, guaranteeing its customers state-of-the-art quality in Products, Training and Technical Service.

SEE YOUR INCRETE REPRESENTATIVE FOR:

- Concrete Color
- Concrete Stain
- Color Hardeners
- Color Release
- Clear Release
- THIN-CRETE
- Stamp Concrete Tools
- SLATE-CRETE
- Concrete Cleaners
- Epoxy Bonded Stone
- Epoxy Coatings
- STAIN-CRETE
- SPRAY-DECK
- Admixtures
- Retarders
- Sealers
- Lubricants
- TEXTURE-CRETE

SPECIFICATION TACTILE DETECTABLE WARNING SYSTEMS

1.0 GENERAL

This specification describes the procedural and material requirements for producing Detectable Warning Surfaces to comply with section 4.29.2 of the Americans With Disabilities Act, by a stamping process.

1.1 STAMPING TOOL REQUIREMENTS

Stamping tools will be of both rigid and flexible design. Rigid tools will be used to copy the required surface configuration on the major portion of the specified area. Flexible tools will be used to apply the required surface on areas where a complete rigid tool will overlap the form work.

1.2 STAMPING TOOL DIMENSIONS

Both rigid and flexible tools will have overall dimensions of 24"x36" or 24"x48" and shall have vented openings to produce truncated domes of 0.8" diameter at the base, 0.2" in height and a center-to-space of 2.35" on a triangular pitch when impressed on a fresh concrete surface.

2.0 DETECTABLE WARNING SURFACE - NEW CONSTRUCTION.

For applications where a complete new slab or ramp installation is to be installed.

2.1.1 INCO TACTILE COLOR MIX

(INTEGRAL COLOR) As manufactured by INCO CHEMICAL SUPPLY CO., INC. 8509 Sunstate St. Tampa, FL 33634

2.1.2 INCO TACTILE COLOR HARDENER As manufactured by INCO CHEMICAL SUPPLY CO., INC. 8509 Sunstate St. Tampa, FL 33634

2.1.3 INCO TACTILE RELEASE As manufactured by INCO CHEMICAL SUPPLY CO., INC. 8509 Sunstate St. Tampa, FL 33634

2.1.4 INCO TACTILE CLEAR SEAL As manufactured by INCO CHEMICAL SUPPLY CO., INC. 8509 Sunstate St. Tampa, FL 33634

2.1.5 CHEMICAL REQUIREMENTS and FORMULATION

The following requirements are based on a 4" thick concrete slab using 3,000 p.s.i. concrete.  
TACTILE INTEGRAL COLOR (Brick Red) 20 lbs. per cubic yard.  
(Other colors will require varying amounts of the Tactile Integral Color)  
INCO COLOR HARDENER 60-75 lbs. per 100 sq. ft.  
INCO COLOR RELEASE 30 lbs. per 1,000 sq. ft.  
INCO CLEAR SEAL 150-200 sq. ft. per gal.

3.0 DETECTABLE WARNING SURFACE-RETROFIT

For applications where an existing slab or ramp must be retrofitted with a detectable warning surface contact INCO for proper procedure.

3.1 APPLICATION SPECIFICATIONS

- 2.1.1 INCO COLOR HARDENER - As manufactured by INCO CHEMICAL SUPPLY CO., INC. 8509 Sunstate St. Tampa, FL 33634
- 2.1.2 INCO SPRAY DECK RESEAL - As manufactured by INCO CHEMICAL SUPPLY CO., INC. 8509 Sunstate St. Tampa, FL 33634
- 2.1.3 INCO ACCELERATOR - As manufactured by INCO CHEMICAL SUPPLY CO., INC. 8509 Sunstate St. Tampa, FL 33634
- 2.1.4 INCO RELEASE AND SEALER - As manufactured by INCO CHEMICAL SUPPLY CO., INC. 8509 Sunstate St. Tampa, FL 33634

3.2 COLOR

Desired color is obtained by use of the appropriate pigmentation in the Tactile Overlay Mix.

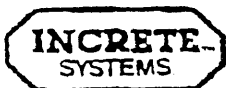
3.3 TACTILE OVERLAY MIX FORMULATION

The following proportions must be strictly adhered to in preparation of the overlay mix.

INCO COLOR HARDENER	50lbs.
INCO ACRYLIC RESIN	1 1/2 quarts
WATER	1 1/2 quarts
ADDITIVE	2 1/2 - 4 oz.

One bag of INCO COLOR HARDENER will cover 13-15 square feet of surface area. For INCO RELEASE and INCO SEALER requirements, see section 2.1.5.

INCO CHEMICAL SUPPLY CO., INC.



TAMPA, FL 33634  
(813) 886-8811 • (800) 752-4626  
FAX (813) 886-0188

© 1993 INCO CHEMICAL SUPPLY CO., INC.

**Project: Lemay Avenue Widening Project**  
**ADDENDUM #1 BID SCHEDULE**

Spec/Item Number	Description	Estimated Quantity	Unit	Unit Cost	Item Cost
<b>Lemay Avenue Widening Quantities:</b>					
202-01	Remove Pipe (RCP, CMP, PVC)	180	LF		
202-02	Remove Existing Wingwalls at Stone Creek Box Culvert	2	EA		
202-03	Remove Existing Parapet Railing at Stone Creek Box Culvert	2	EA		
202-04	Remove Vertical Curb And Gutter	3,056	LF		
202-05	Remove Concrete Sidewalk	7,898	SF		
202-06	Remove Crossspan and Aprons	8,386	SF		
202-07	Remove Asphalt Sidewalk (4" Thick)	15,280	SF		
202-08	Asphalt Taper Mill (0"-2" Depth)	420	SY		
202-09	Rotomill Asphalt Pavement (0"-2" Depth)	7,715	SY		
202-10	Rotomill Asphalt Pavement (5"-10" Depth)	14,600	SY		
202-11	Remove Existing Rip-Rap	2,941	SF		
202-12	Remove Trash Pile at South Ridge Greens Golf Course	1	LS		
202-13	Remove Existing Barricade (Type III)	1	EA		
202-14	Remove Existing Willow Tree at Stone Creek Box Culvert	1	EA		
202-15	Remove Fence (Various Types)	1,135	LF		
202-16	Remove Existing Silt Fence	486	LF		
202-17	Remove Power Pole Anchors	6	EA		
202-18	Cap Irrigation Sprinklers	6	EA		
202-19	Remove Manhole Cone Section - Abandon Sewer	3	EA		
202-20	Remove and Dispose of 2" to 4" Sprinkler Pipe	1	LS		
203-01	Unclassified Excavation	11,535	CY		
203-02	Embankment - (CIP)	3,266	CY		
203-03	Haul & Dispose	8,269	CY		
203-04	Golf Course Grading	1	LS		
203-05	Borrow ABC (Class 5 or 6) - (CIP)	300	TON		
203-06	Muck Excavation - (CIP)	500	CY		
203-07	Topsoil - (Stripping, Stockpiling, Placing) - 6" Depth	5,210	CY		
203-08	Topsoil - (Stripping, Haul Off-Site)	1,735	CY		
203-09	Temporary Access Road (Golf Course Maintenance Building)	1	LS		
203-10	Median Splashblock/ Hardscape Shaping - (CIP)	13,350	SF		
203-11	Grade Stone Creek Channel Flowline and Slopes	1	LS		
203-12	Graded Flow Channel (Park Property)	340	LF		
203-13	Potholing	1	LS		
203-14	Median Specialty Work (Excavation above Light and Power Duct Bank)	1,750	CY		
203-15	Flowfill Section Over Shallow Utilities	1,800	LF		
206-01	Structure Excavation	4,863	CY		
206-02	Borrow Structural Backfill Material (R-Value > 25)	3,800	CY		
206-03	Structural Backfill Flow Fill	250	CY		
206-04	Filter Material (1 1/2" Washed Rock)	372	TON		
206-05	Dewatering	1	LS		
206-06	Structure Haul and Dispose	4,863	CY		
206-07	Structure Muck Excavation	225	CY		
207-01	Wetland Topsoil	100	CY		
207-02	Import Topsoil Screened 3" Depth (BOC) - (CIP)	1,200	CY		
208-01	Erosion Control	1	LS		
210-01	Adjust Manhole Ring/Cover	11	EA		
210-02	Modify Manhole	5	EA		
210-03	Adjust Valve Box (FCLWD)	19	EA		
210-04	Relocate Blow Off (FCLWD)	2	EA		

**Project: Lemay Avenue Widening Project**  
**ADDENDUM #1 BID SCHEDULE**

Spec/Item Number	Description	Estimated Quantity	Unit	Unit Cost	Item Cost
304-01	Aggregate Base Course - (Class 5 or 6) - 6" Depth - (CIP)	10,794	TON		
304-02	Aggregate Base Course Patch Placement - (Class 5 or 6) - 6" Depth - (CIP)	377	TON		
306-01	Reconditioning (8")	19,015	SY		
307-01	Flyash Subgrade Stabilization - (12%)	33,649	SY		
403-01	Hot Bituminous Pavement - Grading S (3" Depth) - (PG 64-28)	7,079	TON		
403-02	Hot Bituminous Pavement - Grading SG (4" Depth) - (PG 64-22)	7,807	TON		
403-03	Asphalt Paver Patching - Grading S (3" Depth) - (PG 64-28)	215	TON		
403-04	Asphalt Paver Patching - Grading SG (4" Depth) - (PG 64-22)	495	TON		
403-05	Asphalt Patching - Grading SG (4" Depth) - (PG 64-22)	69	TON		
403-06	80' x 4' Beaver Slide at Fossil Creek Bridge - Grading S (4" Depth)	32	TON		
420-01	Geotextile Paving Membrane	9,000	SY		
420-02	Geogrid Stabilization Fabric	1,188	SY		
506-01	45'x80' Type L Rip-Rap, 6" Topsoil (CIP Per Detail) Sta. 22+50 lt	1	LS		
506-02	22'x50' Type L Rip-Rap, 6" Topsoil (CIP Per Detail) Sta. 22+50 rt	1	LS		
506-03	10'x10' Type L Rip-Rap, 6" Topsoil (CIP Per Detail) Sta. 37+00 Lt	1	LS		
506-04	10'x25' Type L Rip Rap, 6" Top Soil (CIP Per Detail) Sta. 54+30 Lt	1	LS		
601-01	10' x 12' Pedestrian Underpass with Skylights	125	LF		
601-02	4' x 12' Pre Cast Box Culvert - Wingwalls / Paraphet Walls and Toe Walls	180	LF		
<b>601-03</b>	<b>R &amp; R Parapet Walls @ Stone Creek Box Culvert</b>	<b>25</b>	<b>LF</b>		
603-01	15" ADS N-12	25	LF		
603-02	15" ADS N-12 FES with Grate	1	EA		
603-03	15" RCP Class III	300	LF		
603-04	18" RCP Class III	25	LF		
603-05	24" RCP Class III	18	LF		
603-06	24" RCP Class III FES with Grate	1	EA		
603-07	Remove and Reset Existing 30" ADS FES	1	EA		
603-08	Concrete Joint Encasements	4	EA		
603-09	Median Underdrain Pipe System - (4" Perforated Pipe)	870	LF		
603-10	Median Underdrain Pipe System - (4" Solid Pipe)	315	LF		
603-11	Connect 4" PVC Solid Median Underdrain to a new 4' Manhole	1	EA		
603-12	90 Degree PVC Bend (4")	1	EA		
603-13	18" PVC SDR-35 (or District equal)	30	LF		
604-01	10' Type R Inlet	1	EA		
604-02	Single Type 16 Combination Inlet	1	EA		
604-03	Double Type 16 Combination Inlet	1	EA		
604-04	Inlet in Retaining Wall with Trash Rack	1	EA		
604-05	4' Diameter Manhole	1	EA		
607-01	3 Rail Dowel Rail Fence with No Climb Fabric	467	LF		
607-02	Orange Safety Fence at Golf Course	1,739	LF		
607-03	Portable Chain Link Fence (6' High)	800	LF		
608-01	Concrete Sidewalk (6")	35,448	SF		
608-02	Concrete Sidewalk (5" Thick with Fibermesh) - Yosemite Brown (Saw Cut Joints)	5,272	SF		
608-03	Concrete Flatwork at Underpass (6" Thick) - (Grey)	4,672	SF		
608-04	Concrete Access Ramps with Truncated Dome (8")	6,293	SF		
608-05	Concrete Drive Approach (6")	800	SF		



**Project: Lemay Avenue Widening Project**  
**ADDENDUM #1 BID SCHEDULE**

Spec/Item Number	Description	Estimated Quantity	Unit	Unit Cost	Item Cost
608-06	Concrete Crossspan with Aprons (9 1/2")	7,621	SF		
608-07	Hi-Early Concrete (24 Hour)	222	CY		
608-08	Flowable Fill Concrete	600	CY		
608-09	Exposed Aggerate Median Splashblock (4")	14,017	SF		
608-10	Pedestrian Refuge Island	300	SF		
608-11	Patterned and Decorative Asphalt Crosswalks	2,650	SF		
609-01	Vertical Curb & Gutter (30")	7,177	LF		
609-02	Outfall Curb & Gutter (18")	5,689	LF		
609-03	Driveway Curb Cuts (25' Width)	3	EA		
609-04	R & R Vertical Curb and Gutter	150	LF		
609-05	R & R Drive-Over Curb and Gutter	100	LF		
618-01	Pressure Grouting	75	CY		
619-01	20" DIP Class 51 with Field Lock Gaskets	600	LF		
619-02	20" Butterfly Valve with Valve Box	2	EA		
619-03	20" 45 Degree Bend with Thrust Block & Mega-Lug	7	EA		
619-04	20" 22.5 Degree Bend with Thrust Block & Mega-Lug	2	EA		
619-05	2" Air Release Valve with Manhole and Vent (Per FCLWD)	1	EA		
619-06	Connect to Existing 20" DIP Main	2	EA		
619-07	Fire Hydrant Assembly	3	EA		
619-08	Blow-Off Assembly	1	EA		
619-09	Remove Existing 20" Valve (Deliver to FCLWD)	1	EA		
619-10	Steel Encase 20" DIP Live Water Main 36" x 3/8" Coated Casing (FCLWD)	18	LF		
619-11	3/4" Irrigation Tap and Meter Pit	2	EA		
619-12	6" PVC - C900	60	LF		
619-13	1 1/2" Water Service and Meter Pit	1	EA		
619-14	Wet Tap 6" x 20" Tapping Saddle, Valve and Box	1	EA		
619-15	Cut 20" Valves In	2	EA		

**Subtotal Lemay Avenue Quantities:** \$ \_\_\_\_\_

**Landscaping Quantities:**

2810-01	Irrigation System (This work does not include median irrigation)	1	LS		
-	Topsoil - Mix for Medians	1,420	CY		
-	MSE Block Retaining Wall (Approx. 4' High)	365	LF		
-	Concrete Retaining Wall (8' High)	602	LF		
-	Restore Rock Areas For Private Owners	1	LS		

**Subtotal Landscaping Quantities:** \$ \_\_\_\_\_

**Project: Lemay Avenue Widening Project**  
**ADDENDUM #1 BID SCHEDULE**

Spec/Item Number	Description	Estimated Quantity	Unit	Unit Cost	Item Cost
<b>Miscellaneous Quantities:</b>					
-	Contract Bond	1.00	LS	_____	_____
625-01	Construction Surveying	1.00	LS	_____	_____
626-01	Mobilization	1.00	LS	_____	_____
630-01	Type III Barricades	2.00	SECTION	_____	_____
630-02	Message Boards (7 boards for 20 days)	1.00	LS	_____	_____
630-03	Traffic Control	1.00	LS	_____	_____
<b>Subtotal Misc. Quantities:</b>				<b>\$</b>	_____

The sum of these two amounts will be used to determine the lowest successful bidder according to the following formula:

**A + B X (the daily cost) = Contractor's bid for evaluation for the lowest successful bidder**

Where:

A = Contractor's total bid for the work items

B = Number of Calendar Days required to substantially complete the Work

Daily Cost for this Project = \$4,109.00

The above formula will be used solely for the purpose of determining the lowest successful bidder and will have no effect on the actual total bid cost for completing the work.

**A = Total Construction Cost (Lemay Avenue, Landscaping and Misc. Quantities) \$ \_\_\_\_\_**

**B = Total number of calendar days bid =**  
**Total number of calendar days bid ( \_\_\_\_\_ ) X \$4,109.00 = \$ \_\_\_\_\_**

ADDENDUM #1 BID SCHEDULE  
**TOTAL PROJECT COST = A + B X (the daily cost) = \$ \_\_\_\_\_**