

CITY OF FORT COLLINS

ADDENDUM No. 2

BID #5681

FOSSIL CREEK COMMUNITY PARK

SPECIFICATIONS AND CONTRACT DOCUMENTS

Description of Bid #5681 Fossil Creek Community Park

OPENING DATE: March 28, 2002, 3:00P.M. (Our Clock)

To all prospective bidders under the specifications and contract documents described above, the following changes are hereby made.

ANSWERS TO BIDDER QUESTIONS

1. The gates at the maintenance yard shall be bid as sliding gates (not cantilevered gates). Gate shop drawings shall be prepared by the contractor and submitted for review and approval by the owner's representative (as required by the specifications).
2. Prospective bidders must use the attached revised bid form.

SPECIFICATIONS

1. Section 01800, Definition of Bid Items, Bid Item 176 – Irrigation Pump Station, Wet Well, Sleeving and Intake, shall be revised as follows: "Contractor shall furnish required labor, materials, trenching, backfilling, equipment, implements, testing, parts and supplies necessary for, or appurtenant to installation of prefabricated pump station in accordance with the drawings and specifications. Bid item includes work associated with installing aeration sleeving, intake piping and intake structure, concrete cutoff wall with bentonite, leveling, coordination, startup testing/training of the irrigation pump system for Owner, as a complete bid item. Does not include pump house and covered storage building."
2. Section 02751, Special Finish Concrete, This is a new section that was not included in the original project manual. This section deals with concrete sandblasting and staining. See attachment.
3. Section 02820, Chainlink Fences, subsection 2.01.A.2, shall be revised as follows: "Ten-foot high tennis court shall have 9-gauge 1¾ inch mesh. Ten foot ball field foul line fence shall have 9-gauge 2 inch mesh".
4. Section 02820, Chainlink Fences, subsection 2.01.A, shall be revised as follows: "...a zinc coat weight of 1.2 ounces per square foot of uncoated wire surface...."
5. Section 02830, Modular Retaining Wall Systems, subsection 2.01.A, "Anchor Retaining Wall Systems" shall be considered an approved equivalent to the specified retaining wall product. This product is available through Pavestone Co., (303) 287-3700.

6. Section 02830, Modular Retaining Wall Systems, subsection 2.01.A, "Venture Retaining Wall Systems – The Delta Series" shall be considered an approved equivalent to the specified retaining wall product. This product is available through Venture Retaining Wall Systems, (303) 254-8901.
7. Section 02832, Wood Fence, subsection 2.01.B, shall be revised as follows: "Wire Mesh (Dog Park Only): Four (4) inch by four (4) inch 12 gauge galvanized welded wire mesh".
8. Section 02861, Playground Equipment, subsection 2.01.E.1, shall be revised as follows: "Series 5000 Swing", Model #127258D. Quantity 1. (Also, the Phone number for Rocky Mountain Recreation, Inc. has changed to (303) 783-1452 or (800) 636-0199)
9. Section 02861 Playground Equipment, subsection 2.04: Zeager "Woodcarpet Recreational Surfacing" including the "Duradrain" system shall be considered an approved equivalent to the specified wood play surfacing. This product is available through Woods Site and Playscapes, (303) 688-2132.
10. Section 02890, Pedestrian and Light Vehicle Bridges, subsection 2.01.C, shall be revised as follows: "Loading Design: Uniform live load of 85 psf..."
11. Section 02890, Pedestrian and Light Vehicle Bridges, subsection 2.02.C, The following shall be added to the list of bridge manufacturers: Wheeler Consolidated, (800) 328-3986.
12. Section 16722 Intelligent Fire and Smoke Detection System, subsection 2.01, "Secutron" shall be considered an acceptable manufacturer of the Intelligent Fire and Smoke Detection Systems.

DRAWINGS

1. Wooden Bridge Plan and Details (sheet after D20.3 and before D21.1), This drawing sheet shall be replaced by the five attached 8.5 x 11 sheets
2. Sheets D21.1 and D21.2, The General Notes on these sheets apply to the concrete bridge abutments only. Refer to specification section 02890 for information regarding the bridges.
3. Sheet D4.5, Detail 1, The top rail of the chainlink fence shall be 1.625" outside diameter (not 1.875").
4. Sheets P4, P6 and P14, Unless otherwise noted, the edger around the planting beds on these sheets shall be 6" Concrete Edger.

ATTACHMENTS

1. Five 8.5" x 11" Drawings of the Wooden Bridge
2. Specification Section 02751 - Special Finish Concrete
3. Bid Schedule. Revisions include the following:
 - a. Bid Schedule, Base Bid, "Item No. 42, Concrete Curbwall at Baseball Backstop", quantity has been revised to 280 linear feet.
 - b. Bid Schedule, Base Bid, "Item No. 71, Fossil Creek Prefabricated Bridge (89.5' length)",

Item description has been revised to "Fossil Creek Prefabricated Bridge (100' length)".

- c. Bid Schedule, Base Bid, "Item No. 76, Wooden Pedestrian Bridge Abutments/Supports", Item description has been revised to "Wooden Pedestrian Bridge Abutments. Quantity is 2.
- d. Bid Schedule, Base Bid, "Item No. 114, Shotcrete Runnels and Lower Shallow Pool", unit has been revised to "Lump Sum".

If you have any questions please contact John Stephen, CPPB, Senior Buyer, at 970-221-6777.

END OF ADDENDUM

**RECEIPT OF THIS ADDENDUM MUST BE ACKNOWLEDGED BY A WRITTEN STATEMENT
ENCLOSED WITH THE BID/QUOTE STATING THAT THIS ADDENDUM HAS BEEN RECEIVED.**

BID FORM PHASE 1B

<u>ITEM</u>	<u>DESCRIPTION</u>	<u>QUANTITY</u>	<u>UNIT</u>	<u>UNIT PRICE</u>	<u>ITEM TOTAL</u>
GENERAL REQUIREMENTS					
1	Bid Bond	1	Lump Sum		
2	Mobilization	1	Lump Sum		
3	Construction Staking	1	Lump Sum		
4	Traffic Control	1	Lump Sum		
EARTHWORK					
5a	Site Clearing	20,055	s.y.		
5b	Dust Control	1	Lump Sum		
6	Pond Dewatering	1	Lump Sum		
7a	Earthwork	1	Lump Sum		
7b	Site Preparation and Conditioning	1	Lump Sum		
7c	Wetland Grading	4,840	c.y.		
7d	Structural Fill at Maintenance Building (3' deep)	900	c.y.		
ACCESS DRIVES, PARKING LOTS, CURB AND GUTTER					
8	Aggregate Base Course	2,615	ton		
9	Asphalt Pavement - Heavy Duty	5,930	s.y.		
10	Asphalt Pavement - Regular Duty	19,177	s.y.		
11	Curb and Gutter	1,855	l.f.		
12	Curb Painting	836	l.f.		
13	Pavement Markings and Striping	1	Lump Sum		
14	Gravel Parking Area at Maintenance Yard	1,660	s.y.		
15	Concrete Driveway/Dumpster Pad at Maintenance	1,432	s.y.		
16	Temporary Asphalt Driveway at Lemay Ave Entry	1	Lump Sum		
17	Temporary Asphalt Driveway at Maint./ Lemay Ave.	1	Lump Sum		
18	Concrete Driveway Approach at Fossi Creek Parkway	1	Lump Sum		
19	Concrete Crosswalk	40	s.y.		
PATHS, PLAZAS, BLEACHERS AND STEPS					
20a	4" Thick Std. Grey Concrete Pavement	88,608	s.f.		
20b	4" Thick Beveled Concrete Edge	370	s.f.		
21	5" Thick Std. Grey Concrete Pavement	10,195	s.f.		
22a	5" Thk Color Concrete Pavement Trail w/ fiber mesh	32,633	s.f.		
22b	5" Thick Beveled Concrete Edge at Trail Edge	3,407	s.f.		
23	5" Thick Color Concrete Pavement Plaza	17,010	s.f.		
24	4" Thick Color Concrete Pavement	1,548	s.f.		
25	4" Thick Color Concrete Exposed Aggregate Paving	6,916	s.f.		
26	Type "A" Accessible Ramps	103	s.f.		
27	Type "B" Accessible Ramps	570	s.f.		
28	Soil Cement Paths - 6" Thick	12,900	s.f.		

<u>ITEM</u>	<u>DESCRIPTION</u>	<u>QUANTITY</u>	<u>UNIT</u>	<u>UNIT PRICE</u>	<u>ITEM TOTAL</u>
29	Soil Cement Paths - 8" Thick	24,372	s.f.		
30	Reject Crusher-Fines Surfacing	36,201	s.f.		
31	Concrete Bleachers & Steps	1	Lump Sum		
32	Concrete Stairway at Concession Bldg	1	Lump Sum		
33a	Concrete Stairway at Maintenance Bldg	1	Lump Sum		
33b	Concrete Terraces at Lake Pavilion	1	Lump Sum		
34	Colored Concrete Bands in turf at Lake Pavilion	1	Lump Sum		
35	Sandstone Steps in Crusher-Fines Walk	11	e.a.		
36	Sandblast Pattern in Concrete	1,370	s.f.		
37	Color Stain on Concrete	1,370	s.f.		
38	Stairway at Roller Hockey	1	Lump Sum		
39	Entry Ramp at Playground	1	Lump Sum		
40	Concrete Mow Strip at Outfield Fence	1,064	l.f.		
41	Concrete Pan at Foul Line Fences	980	l.f.		
42	Concrete Curbwall at Baseball Backstop	280	l.f.		

DRAINAGE, EROSION CONTROL AND UTILITIES

43	Sidewalk Chases	17	l.f.		
44	12" Drain Basin	1	ea.		
45	6" Inlet	2	ea.		
46	8" Inlet	1	ea.		
47	4" Clean-out	3	ea.		
48	4" Perforated PVC Pipe	180	l.f.		
49	8" Perforated PVC Pipe	110	l.f.		
50	6" Solid PVC Pipe	52	l.f.		
51a	8" Solid PVC Pipe	110	l.f.		
51b	15" Solid PVC Pipe	50	l.f.		
52	Concrete Endwalls for 6" Drain Pipes	1	ea.		
53	Concrete Endwalls for 8" Drain Pipes	5	ea.		
54	Rip Rap Armoring	100	Cu. Yd		
55	Maintain Exist. Erosion Control Measures	1	Lump Sum		

SITE LIGHTING / POWER DISTRIBUTION

56	Parking Lot Lighting with controls	1	Lump Sum		
57	Trail Lighting with controls	1	Lump Sum		
58	Electrical Service to Time Walk Art Elements	1	Lump Sum		
59	Ballfield Lighting power and controls	1	Lump Sum		
60	Tennis Lighting w/ programmable control system	1	Lump Sum		
61	Basketball Lighting w/ programmable control system	1	Lump Sum		
62	Water Feature Lighting	1	Lump Sum		
63	Maint Yard Lighting	1	Lump Sum		
64	Secondary Electrical Service Park Area	1	Lump Sum		
65	Secondary Electrical Service Maintenance Bldg.	1	Lump Sum		

<u>ITEM</u>	<u>DESCRIPTION</u>	<u>QUANTITY</u>	<u>UNIT</u>	<u>UNIT PRICE</u>	<u>ITEM TOTAL</u>
66	Secondary Electrical Service Irrigation Pump House	1	Lump Sum		
SITE WALLS					
67	Concrete Seat Walls at Roller Hockey/Playground	245	l.f.		
68	Concrete Curbwall at Playground	135	l.f.		
69	Concrete Dugout Wall at Ballfields	800	f.s.f.		
70	Modular Block Retaining Wall at Lake Edge	2,438	f.s.f.		
BRIDGES					
71	Fossil Creek Prefabricated Bridge (100' length)	1	ea.		
72	Fossil Creek Bridge Abutments	2	ea.		
73	Adventure Island Prefabricated Bridge (35' length)	2	ea.		
74	Adventure Island Bridge Abutments	4	ea.		
75	Wooden Pedestrian Bridge (22' length)	1	ea.		
76	Wooden Pedestrian Bridge Abutments	2	ea.		
METAL FENCING					
77	26 foot high Ballfield Backstop	2	ea.		
78	10 Foot ChainLink Fence at Ballfields	240	l.f.		
79	8 Foot Chainlink Fence at Ballfields	990	l.f.		
80	5 Foot Chainlink Fence at Ballfields	1,060	l.f.		
81	Maintenance Gate at Ballfields	3	ea.		
82	10 foot Chainlink Fence at Tennis Courts	1,020	l.f.		
83	4' Gate at Tennis Courts	3	ea.		
84	12' Maintenance Gate at Tennis Courts	3	ea.		
WOOD FENCING					
85	Dog Park Rail Fence w/ wire mesh	833	l.f.		
86	Rail Fence without Wire Mesh	164	l.f.		
87	Maintenance Yard Screen Fence	780	l.f.		
88	Sliding Gate at Maintenance Facility	2	ea.		
METAL RAILING					
89	Stairway Handrails	202	l.f.		
90	Ballfield Bleacher Top Rails	220	l.f.		
91	Metal Guardrail	100	l.f.		
DOG PARK					
92	Main Pedestrian Entry Gate w/ Arch	1	Lump Sum		
93	Interior Vestibule Gate	1	Lump Sum		
94	Maintenance Gate	1	Lump Sum		
BALLFIELDS					

<u>ITEM</u>	<u>DESCRIPTION</u>	<u>QUANTITY</u>	<u>UNIT</u>	<u>UNIT PRICE</u>	<u>ITEM TOTAL</u>
95	Players Benches - Backless	4	ea.		
96	Players Bench with Back	4	ea.		
97	Bat Racks	4	ea.		
98	Trench Drain	440	l.f.		
99	Score Boards	2	ea.		
100	Foul Poles	4	ea.		
101	Skinned Infield Mix	30,300	s.f.		
TENNIS COURTS					
102	Asphalt Tennis Court Pavement	34,928	s.f.		
103	Concrete Perimeter Beam at Tennis Court	1,020	l.f.		
104	Tennis Net, Posts and Related Equipment	5	ea.		
105	Concrete Light Pole Pad	90	s.f.		
BASKETBALL COURTS					
106	Asphalt Basketball Court Pavement	14,560	s.f.		
107	Concrete Perimeter Beam at Basketball Court	604	l.f.		
108	Basketball Post, Backboard, Goal and Net	4	ea.		
109	Concrete Light Pole Pad	80	s.f.		
IN-LINE HOCKEY					
110a	Post Tension Concrete Slab w/ Markings (complete)	1	Lump Sum		
110b	In-Line Hockey Rink Assembly	1	Lump Sum		
SKATE PARK					
111	Skate Park (complete)	1	Lump Sum		
WATER FEATURE					
112	Turtles	2	ea.		
113	Shotcrete Cliff and Upper Shallow Pool	1	Lump Sum		
114	Shotcrete Runnels and Lower Shallow Pool	1	Lump Sum		
115	Water Feature Mechanical System	1	Lump Sum		
116	Stone Runnel Crossings	16	s.f.		
117	Stone Outlet Covers	52	s.f.		
PLAYGROUND					
118	Mammoth Play Element	1	ea.		
119	"Galaxy" 'Bellatrix'	1	ea.		
120	"Meteor Shower" Modified	1	ea.		
121	"Super Nova"	1	ea.		
122	"Vega"	1	ea.		
123	"Spica 1,2,3"	3	ea.		
124	Landscape Structures 'Series 5000 Swing'	1	ea.		

<u>ITEM</u>	<u>DESCRIPTION</u>	<u>QUANTITY</u>	<u>UNIT</u>	<u>UNIT PRICE</u>	<u>ITEM TOTAL</u>
125	"Elements" 'Fort'	1	ea.		
126	"Elements" 'Flow1' Modified	1	ea.		
127	"Elements" Swing w/ Tot Seats (1 Bay)	1	ea.		
128	"Elements" Swing w/ Belt Seats (1 Bay)	1	ea.		
129	"Elements" Spring Rider 'Rocker 1'	2	ea.		
130	"Elements" Spring Rider 'Rocker '	1	ea.		
131	Landscape Structures 'T-Rex'	1	ea.		
132	Landscape Structures 'Rhino-Dino)	1	ea.		
133	Landslide	1	ea.		
134	Wood Fiber Playground Safety Surfacing	13,500	s.f.		
135	Rubber Matting at Swing Sets, Slide Exits	12	ea.		
136	Poured In Place Surfacing "Spectrapour"	200	s.f.		
137	Shark Jaw Entry Feature	1	Lump Sum		
138	Faux Rock Climbing Wall/Steps	1	Lump Sum		
ADVENTURE ISLAND					
139	Neanderthal Hut	1	Lump Sum		
140	Fire Pit & Artifacts	1	Lump Sum		
141	Log bridge	1	Lump Sum		
142	Mastadon Tusk Gateway	1	Lump Sum		
THE KNOLL					
143	Artist Supervision of fine grading at Knoll (Cauldron)	1	Lump Sum		
MAIN ENTRY TIME WALK/MAIN PAVILION AREA					
144	Sandstone Pavers west of Oval Pavilion	1,944	s.f.		
145	Turfblock Pavers	747	s.f.		
146	Artist Supervision of Time Walk Area Grading	1	Lump Sum		
LAKE PAVILION AREA					
147	Pavilion Garden Channel	50	l.f.		
148	Channel Crossing	2	ea.		
ARCHITECTURAL STRUCTURES					
149	Oval Pavilion	1	Lump Sum		
150	Restrooms at Oval Pavilion	1	Lump Sum		
151	Lake Pavilion	1	Lump Sum		
152	Restrooms at Lake Pavilion	1	Lump Sum		
153	Playground Pavilion	1	Lump Sum		
154	Ballfield Concession/RR/overlook	1	Lump Sum		
155	Ballfield Score Keepers Booth	2	ea.		
LANDSCAPING					

<u>ITEM</u>	<u>DESCRIPTION</u>	<u>QUANTITY</u>	<u>UNIT</u>	<u>UNIT PRICE</u>	<u>ITEM TOTAL</u>
156	Fine Grading	1,749,761	s.f.		
157	Soil Preparation - General	1,336,316	s.f.		
158	Soil Preparation - Oval and Ball Diamonds	469,374	s.f.		
159	Deciduous Canopy Trees	466	ea.		
160	Ornamental Trees	270	ea.		
161	Conifer Trees	218	ea.		
162	Deciduous Shrubs	2,276	ea.		
163	Evergreen Shrubs	208	ea.		
164	Perennials/Grasses	2,356	ea.		
165	Irrigated Seed Type 1 - Bluegrass	469,374	s.f.		
166	Irrigated Seed Type 2 - Fescue	1,239,464	s.f.		
167	Irrigated Seed Type 3 - Parking Islands	40,923	s.f.		
168	Non-Irrigated Seed	152,904	s.f.		
169	Wetland seed mix at Oval Pavilion and WQ Pond	6,460.0	s.f.		
170	Wood Mulch	55,929	s.f.		
171	3"-6"River Cobble Mulch in Parking Islands	7,745	s.f.		
172	Weed Barrier Fabric	55,929	s.f.		
173	Sand Bed at Adventure Island and Water Feat.	6,818	s.f.		
174	Steel Edger	786	l.f.		
175	Concrete Landscape Edger	2,803	l.f.		
IRRIGATION					
176	Irrigation Pump Station, Wetwell, Sleeving and Intake	1	Lump Sum		
177	Irrigation System (complete)	1	Lump Sum		
MISCELLANEOUS SITE FEATURES					
178	Barbeques	6	ea.		
179	Emergency Call Box	1	ea.		
180	Benches - Backless	12	ea.		
181	Benches - With Back	11	ea.		
182	Rectangular Picnic Tables	37	ea.		
183	Round Picnic Tables	10	ea.		
184	Trash Receptacles	13	ea.		
185	Bicycle Rack	39	ea.		
186	Drinking Fountain - Playground	1	ea.		
187	Drinking Fountain with Dog Bowl - Dog Park	1	ea.		
188	Stone Bollards at Concessions Bldg.	7	ea.		
189	Shotcrete Mudbank Walls/ Nautilus at Lemay Entry	1	Lump Sum		
SIGNAGE					
190	Stop Signs	5	ea.		
191	Post Mounted Fire Lane Signs	44	ea.		
192	Regulatory Signs Mounted on Light Poles	9	ea.		

ITEM	DESCRIPTION	QUANTITY	UNIT	UNIT PRICE	ITEM TOTAL
193	Accessible Parking Signs	14	ea.		
MAINTENANCE FACILITY					
194	Maintenance Building	1	Lump Sum		
195	Irrigation Pump House/Covered Storage/Bins	1	Lump Sum		

TOTAL OF BASE BID \$ _____

in writing _____

Alternate Bid Items

ALTERNATE NO. 1 - PRE-FABRICATED SHADE SHELTERS

1a	Prefabricated Shelters	5	ea.		
1b	Picnic Tables	5	ea.		
1c	Crusher-Fines Pad	5	ea.		
1d	Trash Receptacles	5	ea.		

TOTAL OF ALTERNATE BID NO. 1 \$ _____

in writing _____

ALTERNATE NO. 2 - PRE-FABRICATED DUGOUT SHELTERS

2a	Dugout Shelters	4	ea		
----	-----------------	---	----	--	--

TOTAL OF ALTERNATE BID NO. 2 \$ _____

in writing _____

ALTERNATE NO. 3 - POST TENSION CONCRETE TENNIS COURT

3a	Post Tension Slab	5	ea		
3b	Deduct Asphalt Slab (Credit)	5	s.f.		
3c	Deduct Concrete Perimeter Beam (Credit)	6	s.f.		

TOTAL OF ALTERNATE BID NO. 3 \$ _____

in writing _____

<u>ITEM DESCRIPTION</u>	<u>QUANTITY</u>	<u>UNIT</u>	<u>UNIT PRICE</u>	<u>ITEM TOTAL</u>
-------------------------	-----------------	-------------	-------------------	-------------------

ALTERNATE NO. 4 - MITIGATIVE WETLAND SEEDING

4a Wetland Seed	114,127	s.f.		
-----------------	---------	------	--	--

TOTAL OF ALTERNATE BID NO. 4 \$ _____

in writing _____

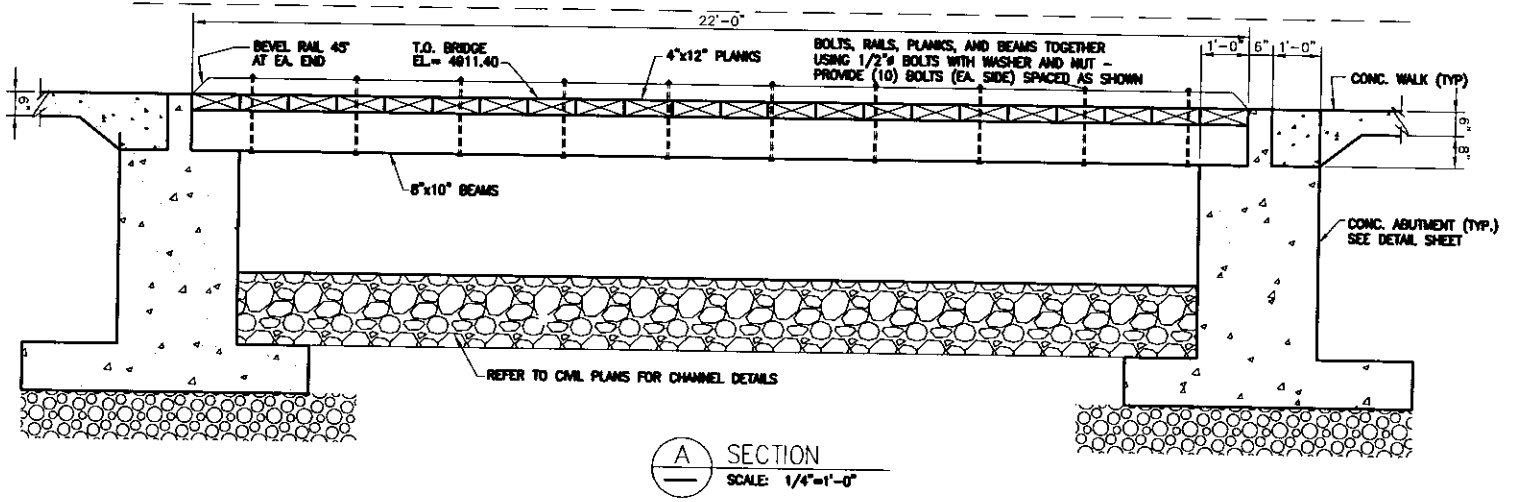
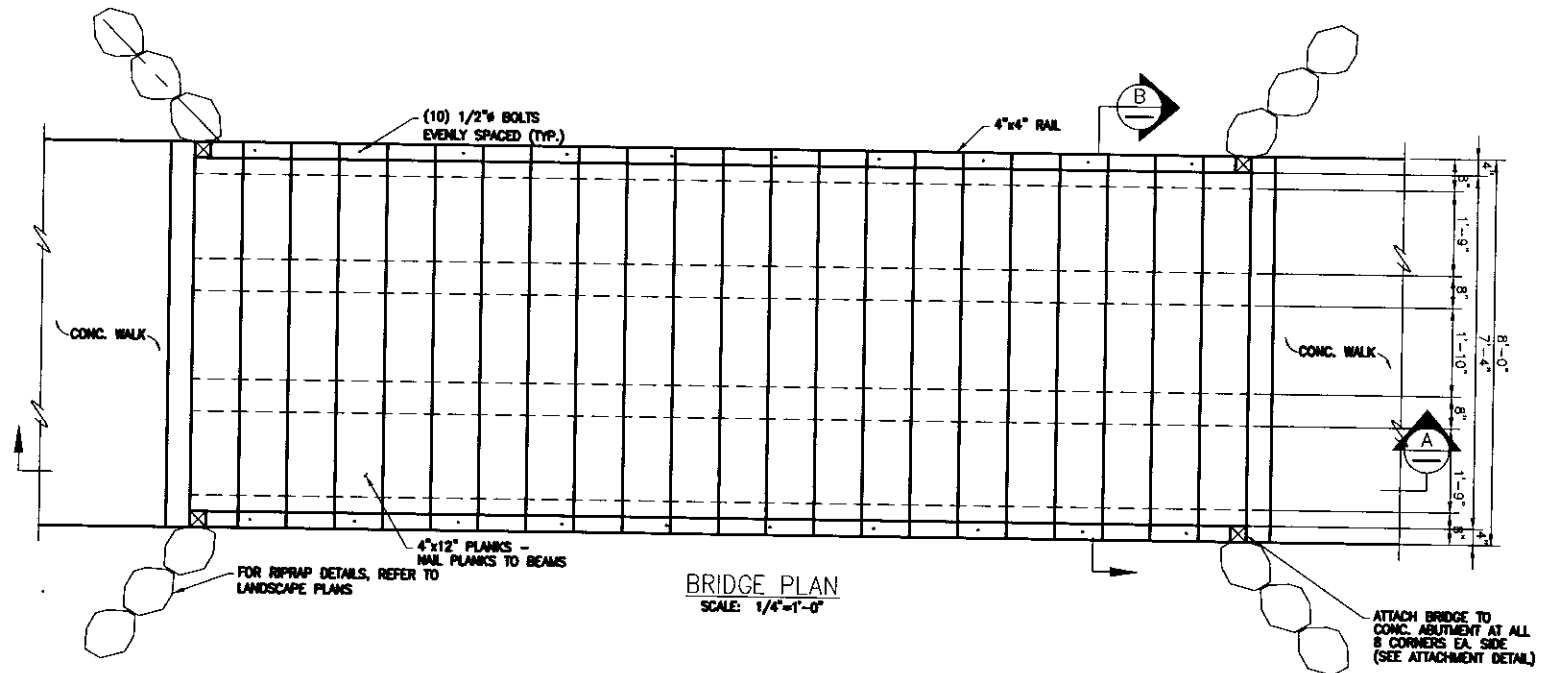
ALTERNATE NO. 5 - IMPORTED SOIL FOR SOIL CEMENT MIX

5a Imported Soil for soil cement	970	c.y.		
----------------------------------	-----	------	--	--

TOTAL OF ALTERNATE BID NO. 5 \$ _____

in writing _____

ALTERNATE NO. 6 - SPECIAL STEEL COATINGS



WOODEN BRIDGE PLAN
FOSSIL CREEK COMM. PARK
JOB NO. 39262.00
3/14/02
1 OF 5



J.R. ENGINEERING
 A Subsidiary of Westman

6020 Greenwood Plaza Blvd. Englewood, CO 80111
 303-740-9363 Fax: 303-721-9019 www.jrengineering.co

GENERAL NOTES:

THE CONTRACTOR SHALL BE RESPONSIBLE FOR THE STABILITY OF THE STRUCTURE DURING CONSTRUCTION.

DO NOT BACKFILL UNTIL BRIDGE SUPERSTRUCTURE IS IN PLACE.

REFERENCE TERRACON REPORT NO. 20005008.

ALL REINFORCING STEEL SHALL BE NON EPOXY-COATED UNLESS NOTED ON PLANS

THE FOLLOWING TABLE GIVES THE MINIMUM LAP SPLICE LENGTH FOR REINFORCING STEEL BARS, UNLESS SHOWN OR OTHERWISE NOTED.

BAR SIZE	#4	#5	#6	#7	#8
SPLICE LENGTH	1'-0"	1'-4"	1'-7"	1'-10"	2'-5"

ALL REINFORCING SHALL HAVE A 2" CLEAR COVER EXCEPT AS NOTED.

ALL CONSTRUCTION JOINTS SHALL BE THOROUGHLY CLEANED BEFORE FRESH CONCRETE IS POURED.

ALL EXPOSED CONCRETE CORNERS SHALL BE CHAMFERED 3/4"

ALL CONSTRUCTION JOINTS NOT SHOWN ON THE PLANS SHALL BE APPROVED BY THE ENGINEER.

CONTRACTOR SHOULD ENSURE THAT EACH GAP BETWEEN THE ENDS OF THE SUPERSTRUCTURE AND ABUTMENTS DOES NOT EXCEED 1".

STRUCTURE BACKFILL (CLASS 1) SHALL BE IN ACCORDANCE WITH THE COLORADO DEPARTMENT OF TRANSPORTATION STANDARD SPECIFICATIONS.

ALL STRUCTURAL STEEL SHALL BE GALVANIZED ASTM A36 UNLESS NOTED OTHERWISE.

ALL STEEL BOLTS AND CONNECTION MATERIALS SHALL BE GALVANIZED.

ALL TIMBER MEMBERS SHALL BE ARSENIC-AND CHROMIUM-FREE PRESSURE TREATED WOOD PRODUCED IN ACCORDANCE WITH ACQ PRESERVE STANDARD ACQ-99 AND AWWA STANDARDS (C1, C2, C5, C9, C15, C17, CP5), ICBO ER 4981, OR APPROVED EQUAL.

ALL TIMBER MEMBERS SHALL BE DOUGLAS FIR-LARCH WITH MINIMUM $F_b = 1450$ PSI.

DESIGN DATA: 16TH EDITION (1996) OF THE AASHTO STANDARD SPECIFICATIONS FOR HIGHWAY BRIDGES. (WITH 1997 INTERIM REVISIONS), AASHTO GUIDE SPECIFICATIONS FOR DESIGN OF PEDESTRIAN BRIDGES. LOAD FACTOR DESIGN.

CONSTRUCTION MATERIAL PROPERTIES:

CONCRETE $f_c = 4,500$ psi
REINFORCING STEEL $f_y = 60,000$ psi

CONCRETE SHALL CONFORM TO COLORADO DEPARTMENT OF TRANSPORTATION STANDARD SPECIFICATIONS' CONCRETE, CLASS D.

CONCRETE SHALL RECEIVE A CLASS 1 FINISH PER THE COLORADO DEPARTMENT OF TRANSPORTATION STANDARD SPECIFICATIONS.

TYPE II CEMENT SHALL BE USED FOR ALL CONCRETE FOR THE ABUTMENTS AND WINGWALLS.

LOADING DATA:

LIVE LOAD :
85 PSF = PEDESTRIAN LOADING
10,000 LBS. = VEHICLE LOADING
2'-0" SURCHARGE LIVE LOAD
WIND LOAD = 25 PSF

DEAD LOAD:
VERTICAL EARTH LOAD = 120 LBS./CU. FT.

HORIZONTAL EARTH LOAD = 60 LBS./CU. FT. (EQUIVALENT FLUID PRESSURE)

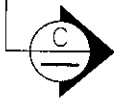
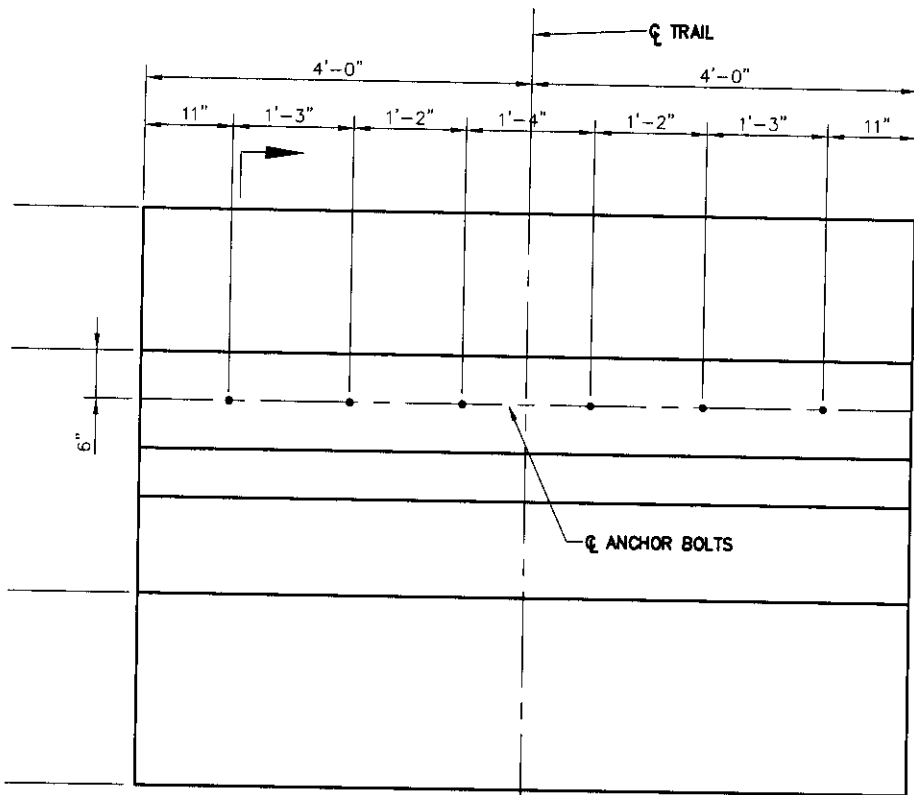
WOODEN BRIDGE NOTES
FOSSIL CREEK COMM. PARK
JOB NO. 39262.00
3/14/02
2 OF 5



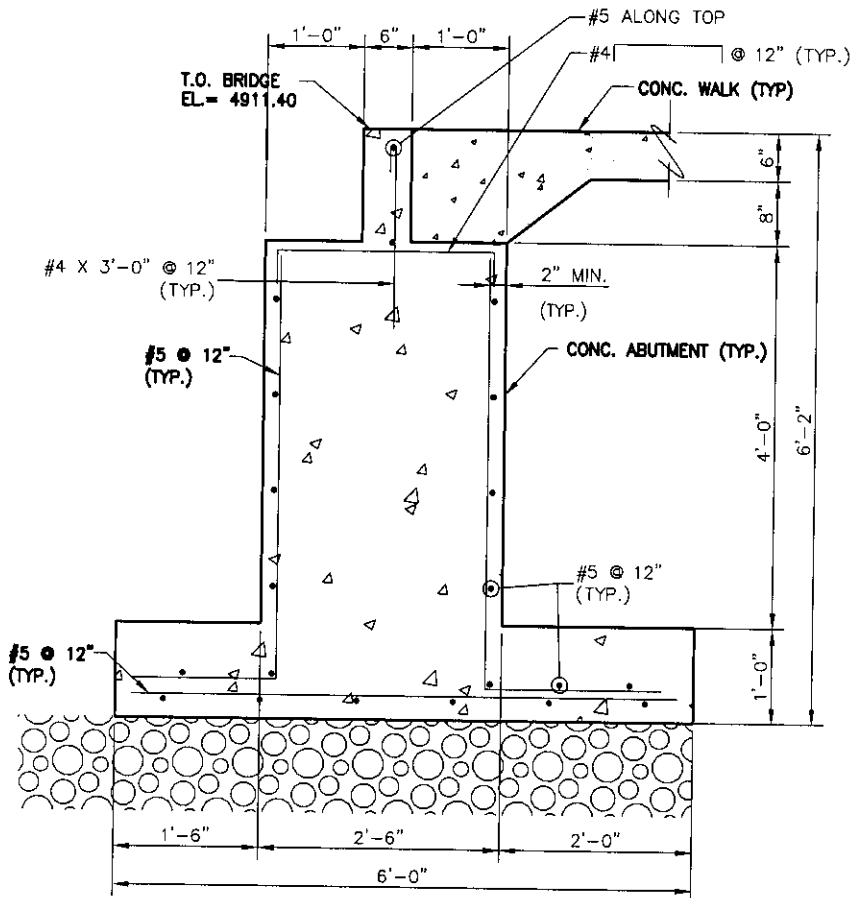
J-R ENGINEERING

A Subsidiary of Westrian

6020 Greenwood Plaza Blvd. Englewood, CO 80111
303-740-0303 Fax 303-701-0019 www.jrengineering.com



ABUTMENT PLAN
SCALE: 1/2" = 1'-0"

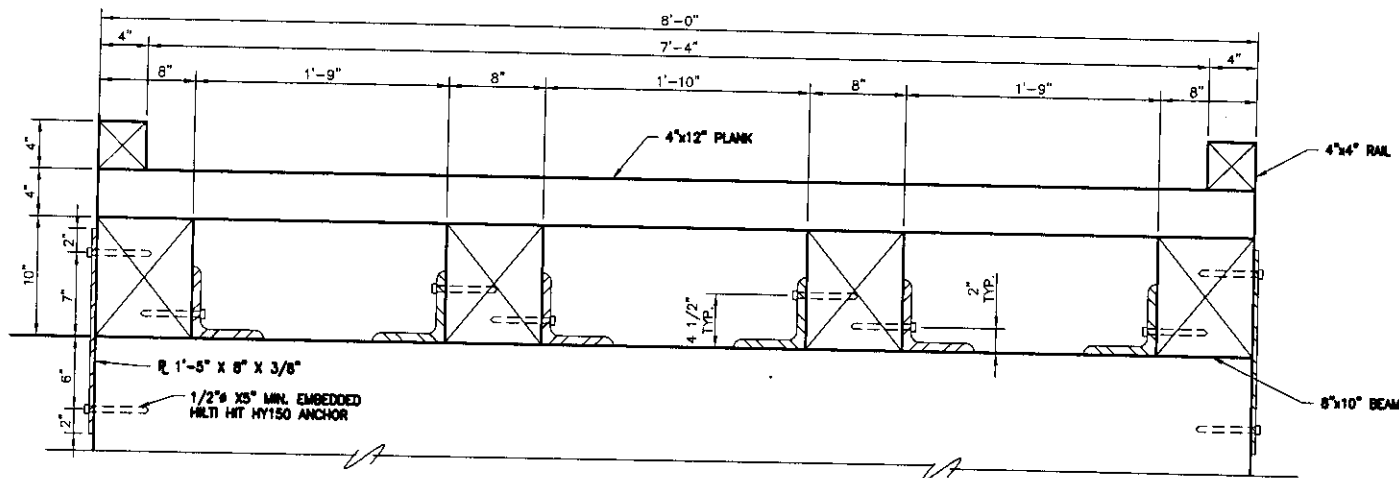


SECTION
SCALE: 1/2" = 1'-0"

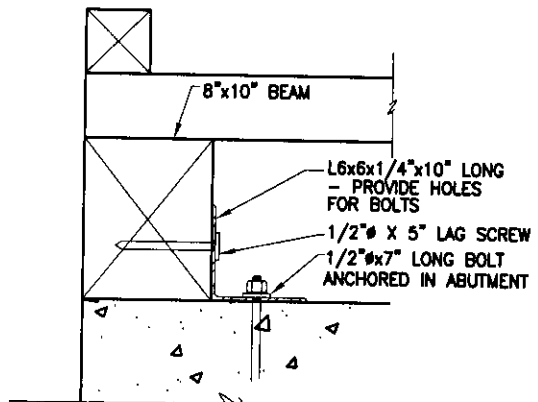
WOODEN BRIDGE DETAILS
FOSSIL CREEK COMM. PARK
JOB NO. 39262.00
3/14/02
3 OF 5

J-R ENGINEERING
A Subsidiary of Westrian

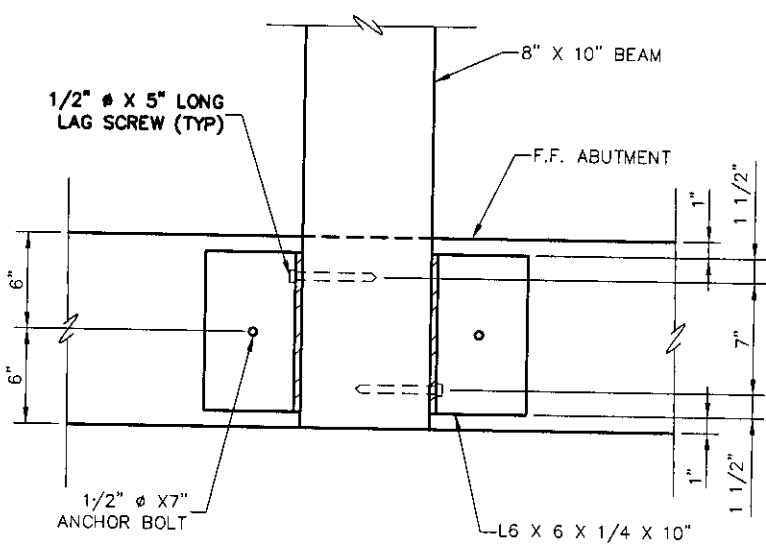
6020 Greenwood Plaza Blvd. Englewood, CO 80111
303-740-9303 Fax: 303-701-0010 www.jrengineering.com



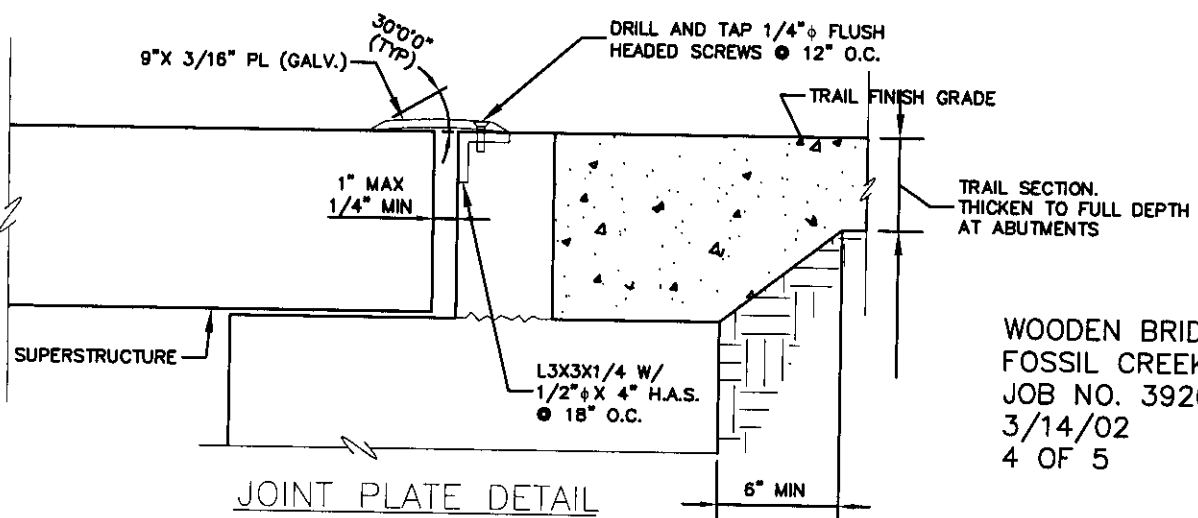
B SECTION
SCALE: 3/4"=1'-0"



ATTACHMENT DETAIL
SCALE: 1"=1'-0"



BEARING DETAIL
SCALE: 1" = 1'-0"

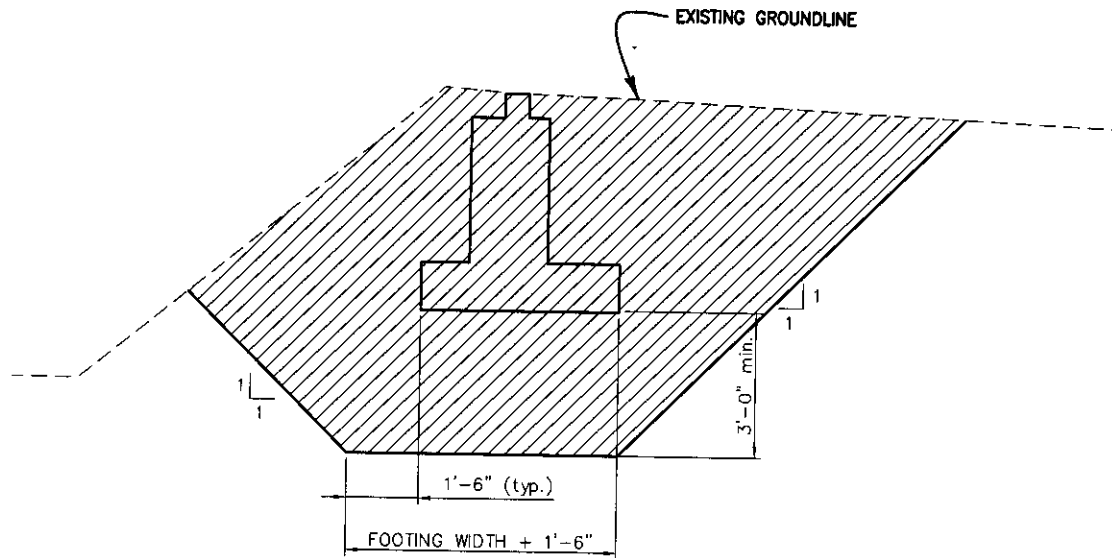


JOINT PLATE DETAIL
(TYP. EACH END)
N.T.S.

WOODEN BRIDGE DETAILS
FOSSIL CREEK COMM. PARK
JOB NO. 39262.00
3/14/02
4 OF 5

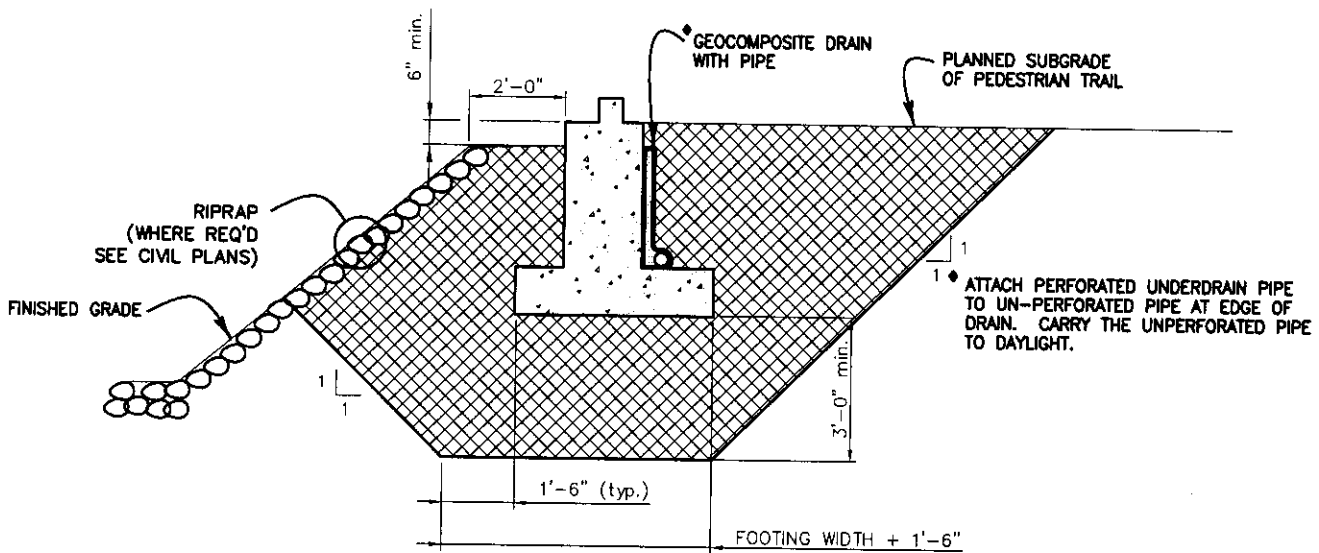


6020 Greenwood Plaza Blvd. Englewood, CO 80111
703.740.0702





STRUCTURE EXCAVATION

IF BEDROCK IS ENCOUNTERED DURING STRUCTURE EXCAVATION FOR THE ABUTMENTS, SPECIALIZED HEAVY-DUTY EQUIPMENT MAY BE REQUIRED.



STRUCTURE BACKFILL

STRUCTURE BACKFILL SHALL CONFORM TO THE COLORADO DEPARTMENT OF TRANSPORTATION STRUCTURE BACKFILL (CLASS 1).

-  LIMITS OF STRUCTURE EXCAVATION
-  LIMITS OF STRUCTURE BACKFILL (CLASS 1)

STRUCTURE EXCAVATION AND BACKFILL

WOODEN BRIDGE DETAILS
 FOSSIL CREEK COMM. PARK
 JOB NO. 39262.00
 3/14/02
 5 OF 5



6020 Greenwood Plaza Blvd. Englewood, CO 80111
 303.740.0707 Fax 303.701.0010

SECTION 02751 – SPECIAL FINISH CONCRETE

PART 1 - GENERAL

1.01 Work Included

- A. The work under this section consists of sandblasting and staining the concrete flatwork and vertical surfaces as shown on the construction drawings.

1.02 Related Work Specifications Elsewhere

- A. Section 02750: Concrete Paving.
- B. Section 03050: Cast in Place Concrete

PART 2 - MATERIALS

2.01 Concrete Stain

- A. Lithochrome Chemstain as provided by LM Schofield Company. 1-800-800-9900 or approved equal. Color shall be CS-11 Fern Green.

PART 3 – METHODS AND PROCEDURES

3.01 Test Panel

- A. General contractor to prepare 2 – 4” x 6” x 6’ test panels of concrete, divided into 3’ x 3’ pictured-framed squares with swept broom finish as per FLC standards prior to beginning any work on site. Sandblast to various depths to show the different effects. Owner’s Representative to approve desired depth. Apply stain to test areas for approval be Owner’s Representative..

3.02 Sandblasting

- A. Lay out pattern for approval be the Owner’s Representative prior to sandblasting. Use forming material that will achieve a clean, straight, sharp line between the sandblasted material and the non sandblasted material. Sandblast to depth approved by the College per test panel.

3.03 Staining

- A. Apply stain per manufacturer’s recommendations to all sandblasted areas.

END OF SECTION 02722